

FRANKLIN & MARSHALL

January 2016 Franklin & Marshall College Poll

SUMMARY OF FINDINGS

**Prepared by:
Center for Opinion Research
Floyd Institute for Public Policy
Franklin & Marshall College**

January 28, 2016

Table of Contents

KEY FINDINGS.....	3
<i>TOM WOLF JOB PERFORMANCE AND THE STATE BUDGET IMPASSE.....</i>	<i>3</i>
<i>PRESIDENT OBAMA’S JOB PERFORMANCE</i>	<i>5</i>
<i>PRESIDENTIAL PRIMARY RACES.....</i>	<i>7</i>
ATTACHMENT A.....	10
ATTACHMENT B.....	11
MARGINAL FREQUENCY REPORT.....	12

Key Findings

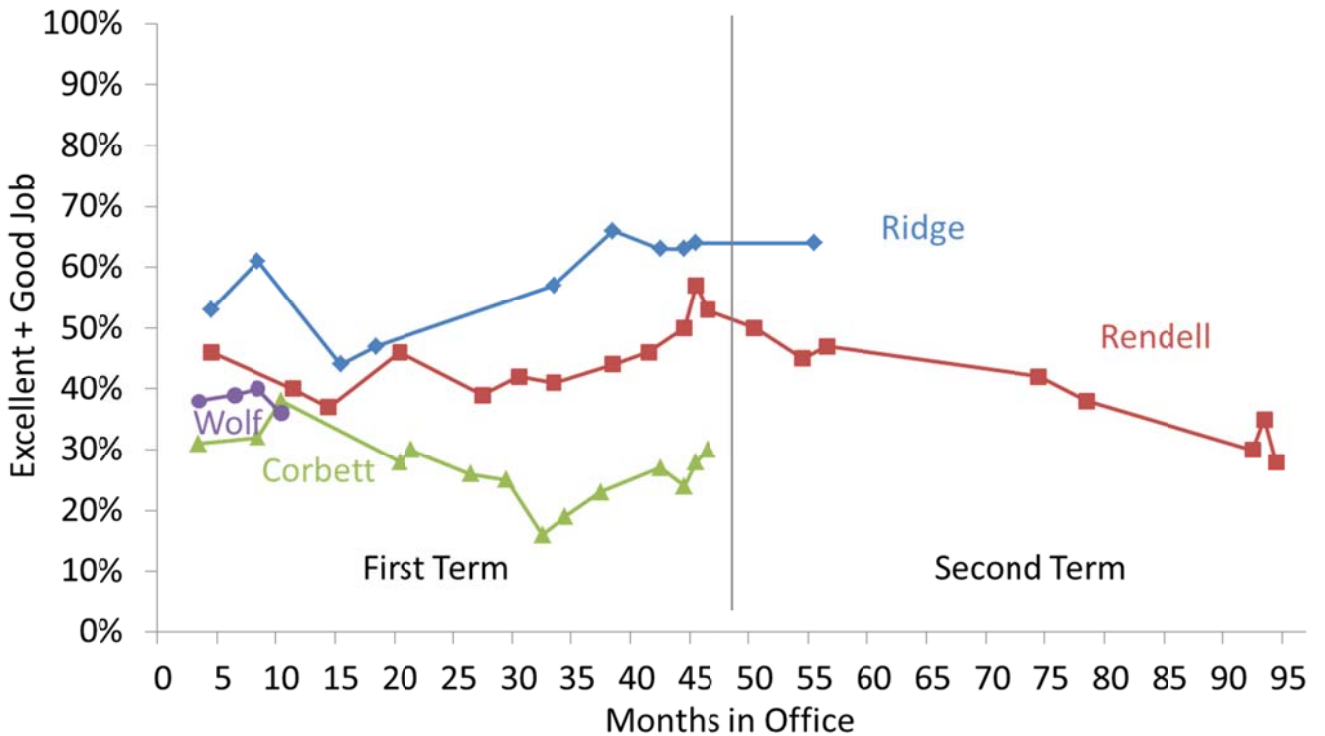
The January 2016 Franklin & Marshall College Poll of Pennsylvania registered voters shows increasing dissatisfaction with the direction of the state and with the state's politicians. Two in three (67%) registered voters believe the state is "on the wrong track," up from 62% in October, and two in five (38%) say that government and politicians are the biggest problems facing the state. Four in five (82%) voters believe that state government needs reformed. These sentiments are continuing to affect Governor Wolf's job performance ratings; 33% of registered voters believe he is doing an "excellent" or "good" job as governor, which is down from 36% in October and 39% in August. The January Poll shows that more registered voters continue to hold the state legislature (52%) than the governor (32%) responsible for the state's late budget.

Tom Wolf Job Performance and the State Budget Impasse

One in three (33%) registered Pennsylvania voters believes Governor Wolf is doing an "excellent" or "good" job as governor, which is a decrease from the October (36%) and August (39%) polls. Only half (49%) Democrats rate his performance as "excellent" or "good," down from 57% in October. Governor Wolf's job performance ratings are similar to Governors Rendell and Corbett but lower than Governor Ridge at this point in their first terms (see Figure 1).

Figure 1: Comparison of Pennsylvania Governors Job Performance Ratings

How would you rate the way that [fill Governor] is handling his job as governor? Would you say he is doing... an excellent job, a good job, only a fair job, or a poor job as governor?



More registered voters hold the state legislature (52%) than the governor (32%) responsible for the state’s late budget, a proportion that has remained consistent since August. The proportion that trusts the governor (42%) and the state legislature (39%) to make decisions about the state budget has also remained stable since August. As with previous surveys, responses about the budget are heavily influenced by party; about three-quarters (73%) of Democrats believe the state legislature is more responsible than the governor for the budget impasse, but one in two (52%) Independent voters and only one quarter (26%) of Republicans believe so.

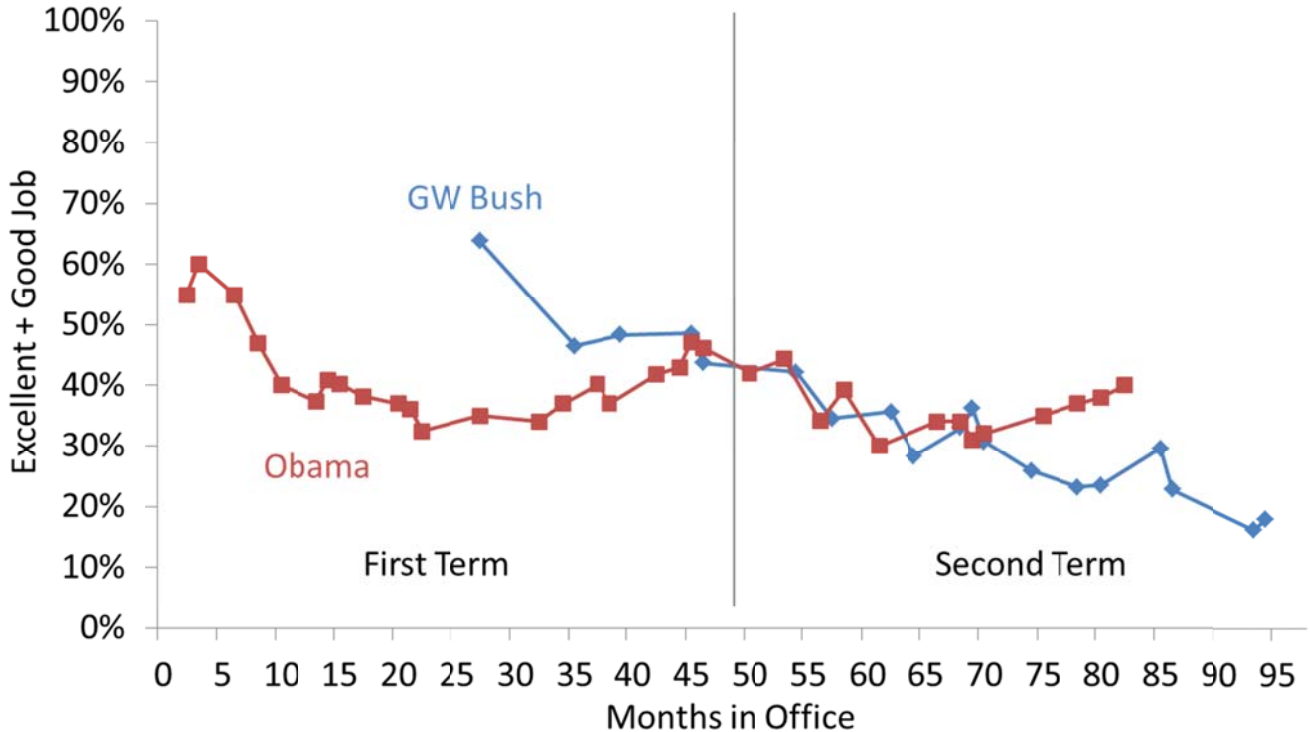
The state budget impasse is affecting how registered voters perceive the state and state government. The proportion of registered voters who believe the state is headed in the right direction is nearly half what it was last March (21% in January compared to 39% in March), prior to the budget impasse. Two in five (38%) registered voters believe that government and politicians are the state's greatest problem. More than four in five (82%) registered voters think the state government needs reformed, and this sentiment is strongly held among voters of all parties (76% of Republicans, 86% of Democrats, and 88% of Independents). Only one in seven (14%) registered voters believes the state legislature is doing an "excellent" or "good job."

President Obama's Job Performance

Two in five (41%) registered Pennsylvania voters believe President Obama is doing an "excellent" or "good" job as President, which is about the same as in recent surveys. Two in three (65%) of the state's registered Democrats provide the president with a favorable job performance rating, and only one in three (32%) independents does. One in ten (12%) registered Republicans rate his performance favorably. President Obama's job performance ratings are better than President Bush's ratings in Pennsylvania at a similar point in his presidency (Figure 2).

Figure 2: Comparison of Presidential Job Performance Ratings, Pennsylvania

How would you rate the way that [fill President] is handling his job as President? Would you say he is doing... an excellent job, a good job, only a fair job, or a poor job as President?



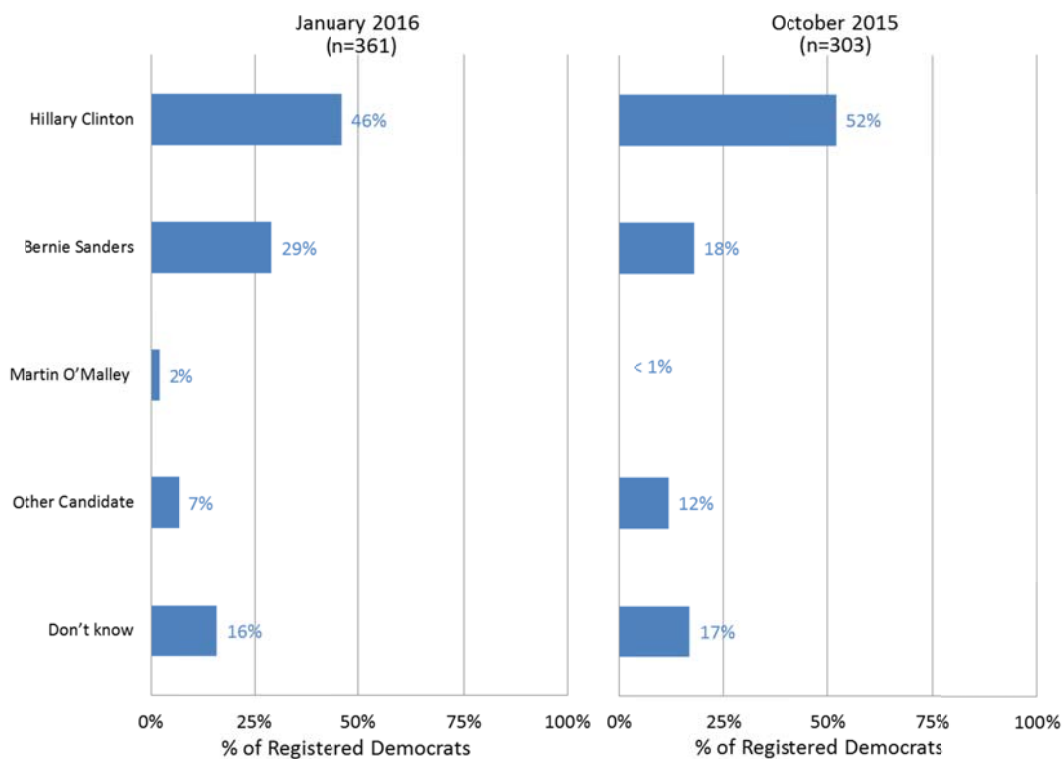
President Obama proposed several initiatives designed to strengthen the nation's background check system for gun buyers. A majority (55%) of registered Pennsylvania voters has consistently favored more laws that regulate gun ownership (see Marginal Frequency Report). An even larger share of registered voters supports the President's proposals to strengthen the background check system. More than four in five (88%) favor requiring background checks for all gun buyers and more than four in five (85%) favor incorporating more information about mental health into the background check system.

Presidential Primary Races

Hillary Clinton holds a sizable advantage in the presidential race among registered Democrats in Pennsylvania. Secretary Clinton leads her closest rival, Senator Bernie Sanders 46% to 29%, with 16% reporting they are still undecided. Secretary Clinton led Senator Sanders by a larger margin in October, 52% to 18%.

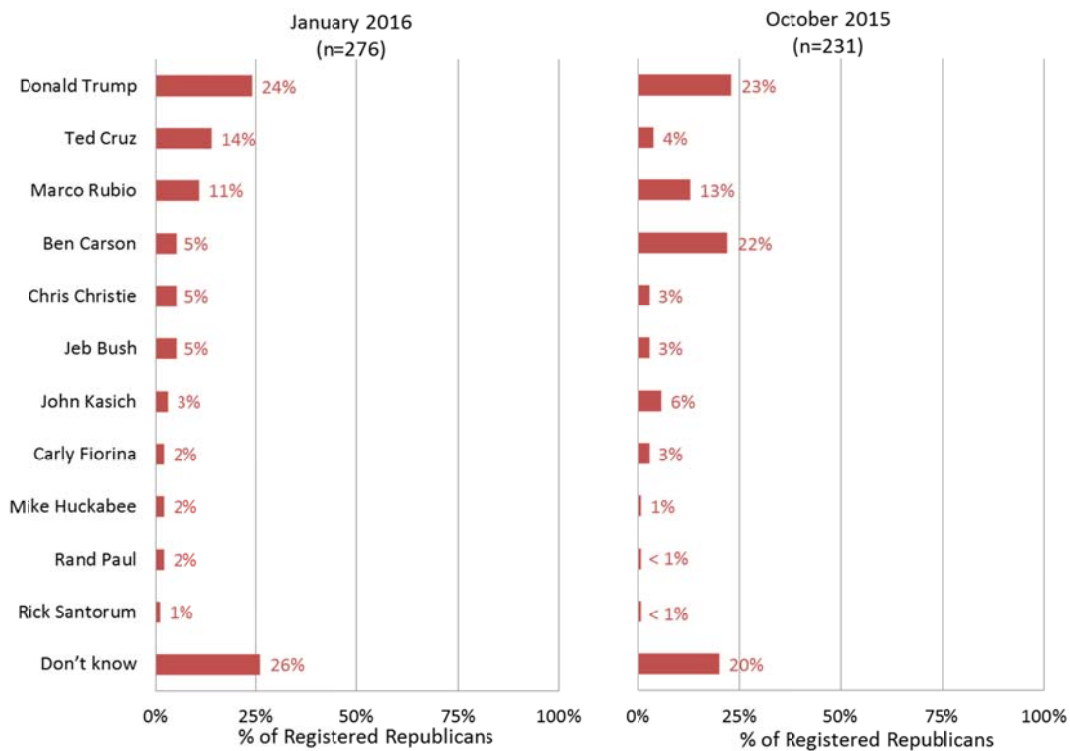
Figure 3: Democratic Presidential Primary, Pennsylvania voters January 2016

If the Democratic primary election for president was being held today would you vote for...?



The contest for the Republican presidential nomination is a bit clearer than in October. At the moment, Donald Trump (24%) leads Ted Cruz (14%) and Marco Rubio (11%) with about one in four (26%) registered voters still undecided (see Figure 3). In October, Donald Trump and Ben Carson were in a dead heat, 23% to 22%, and Marco Rubio was third (13%).

Figure 4: Republican Presidential Primary, Pennsylvania voters January 2016
If the Republican primary election for president was being held today would you vote for...?



Methodology

The survey findings presented in this release are based on the results of interviews conducted January 18 – 23, 2016. The interviews were conducted at the Center for Opinion Research at Franklin & Marshall College on behalf of the Center for Politics and Public Affairs. The Poll was designed and administered by the staff of the Center for Opinion Research. The data included in this release represent the responses of 732 Pennsylvania registered voters, including 361 Democrats, 276 Republicans, and 95 Independents. The sample of registered voters was obtained from Labels & Lists. All sampled respondents were notified by letter about the survey. Interviews were completed over the phone and on-line depending on each respondent's preference. Survey results were weighted (gender, region and party registration) using an iterative weighting algorithm to reflect the known distribution of those characteristics as reported by the Pennsylvania Department of State.

The sample error for this survey is +/- 3.6 percentage points when the design effects from weighting are considered. In addition to sampling error, this poll is also subject to other sources of non-sampling error. Generally speaking, two sources of error concern researchers most. Non-response bias is created when selected participants either choose not to participate in the survey or are unavailable for interviewing. Response errors are the product of the question and answer process. Surveys that rely on self-reported behaviors and attitudes are susceptible to biases related to the way respondents process and respond to survey questions

Attachment A

Job Performance: Governor Wolf, Pennsylvania January 2016

How would you rate the way that Tom Wolf is handling his job as governor? Would you say he is doing an...

	Excellent/Good	Only Fair/Poor	Do Not Know
Political party*			
Republican	11%	83%	6%
Democrat	49%	45%	6%
Independent or something else	29%	60%	11%
Ideology*			
Extremely liberal	57%	25%	18%
Slightly liberal	56%	38%	5%
Moderate	38%	55%	6%
Slightly conservative	16%	79%	5%
Extremely conservative	7%	90%	3%
Gender			
Male	34%	61%	6%
Female	31%	62%	7%
Age*			
Under 35	32%	54%	13%
35-54	27%	61%	12%
Over 55	34%	62%	4%
Education**			
HS or less	26%	69%	5%
Some college	29%	65%	6%
College degree	37%	56%	8%
Income			
Under 35	40%	55%	5%
35-75	28%	64%	7%
Over 75	35%	58%	7%
Race			
White	32%	62%	6%
Nonwhite	38%	52%	10%
Marital Status			
Single, Never Married	37%	52%	11%
Married	30%	64%	6%
Not currently married	36%	58%	6%
Religious Affiliation*			
Protestant	27%	69%	5%
Catholic	28%	67%	5%
Other, unaffiliated	43%	47%	11%
Born Again Christian or Fundamentalist**			
Yes	24%	70%	6%
No	35%	58%	7%
Gun Owner*			
Yes	24%	70%	6%
No	37%	56%	7%
Region**			
Philadelphia	34%	57%	9%
Northeast	42%	51%	7%
Allegheny	31%	66%	4%
Southwest	32%	66%	2%
Northwest	24%	71%	4%
Central	25%	69%	5%
Southeast	37%	53%	10%
Employment			
Fulltime	28%	63%	9%
Other	37%	57%	6%
Retired	33%	62%	4%

* p<0.01

** p<0.05

Attachment B

Job Performance: President Obama, Pennsylvania January 2016

How would you rate the way that Barack Obama is handling his job as president? Would you say he is doing an...

		Excellent/Good	Only Fair/Poor	Do Not Know
Political party*				
	Republican	12%	87%	1%
	Democrat	65%	35%	0%
	Independent or something else	32%	66%	2%
Ideology*				
	Extremely liberal	90%	10%	0%
	Slightly liberal	76%	24%	0%
	Moderate	48%	52%	0%
	Slightly conservative	13%	87%	0%
	Extremely conservative	4%	95%	1%
Gender				
	Male	37%	62%	1%
	Female	44%	56%	1%
Age*				
	Under 35	49%	45%	6%
	35-54	41%	58%	1%
	Over 55	40%	60%	0%
Education				
	HS or less	34%	65%	1%
	Some college	39%	60%	1%
	College degree	45%	54%	0%
Income				
	Under 35	42%	56%	2%
	35-75	43%	57%	0%
	Over 75	45%	55%	0%
Race				
	White	40%	60%	1%
	Nonwhite	54%	46%	0%
Marital Status**				
	Single, Never Married	53%	45%	2%
	Married	37%	62%	1%
	Not currently married	42%	58%	0%
Religious Affiliation*				
	Protestant	33%	67%	0%
	Catholic	33%	65%	1%
	Other, unaffiliated	59%	40%	1%
Born Again Christian or Fundamentalist*				
	Yes	25%	74%	1%
	No	47%	52%	1%
Gun Owner*				
	Yes	26%	73%	1%
	No	50%	49%	1%
Region*				
	Philadelphia	66%	34%	0%
	Northeast	41%	59%	0%
	Allegheny	36%	63%	1%
	Southwest	30%	67%	3%
	Northwest	31%	69%	0%
	Central	31%	67%	2%
	Southeast	50%	50%	0%
Employment				
	Fulltime	42%	58%	0%
	Other	40%	58%	2%
	Retired	40%	60%	0%

* p<0.01

** p<0.05

Marginal Frequency Report

Responses may not total 100% due to rounding.

REG. Some people are registered to vote, and many others are not. Are you CURRENTLY REGISTERED to vote at your present address?

100% Yes
0% No

RegPARTY. Are you currently registered as a Republican, a Democrat, an Independent, or as something else?

38% Republican
49% Democrat
11% Independent
2% Something else

RightDir. All in all, do you think things in Pennsylvania are generally headed in the right direction, or do you feel that things are off on the wrong track?

	Headed in Right Direction	Off on the Wrong Track	Don't know
Jan 16	21%	67%	12%
Oct 15	26%	62%	12%
Aug15	32%	54%	13%
Jun 2015	36%	47%	17%
Mar 2015	39%	47%	15%
Oct 2014	28%	61%	11%
Sept 2014	29%	60%	11%
Aug 2014	27%	61%	13%
Jun 2014	30%	59%	11%
Jan 2014	25%	62%	13%
Oct 2013	25%	61%	13%
Aug 2013	26%	62%	12%
May 2013	28%	58%	13%
Aug 2012	31%	56%	13%
June 2012	30%	57%	13%
Feb 2012	31%	56%	13%
Jan 2012	38%	47%	15%
Oct 2011	38%	49%	13%
Aug 2011	34%	53%	13%
Mar 2011	37%	53%	10%
Oct 2010	27%	64%	9%
Sep 2010	31%	59%	10%
Aug 2010	30%	58%	12%
May 2010	35%	55%	10%
Mar 2010	32%	58%	10%
Feb 2010	37%	50%	13%
Jan 2010	39%	53%	8%

MIP_PA. What do you think is the MOST IMPORTANT problem facing PENNSYLVANIA TODAY?
(512 registered voters)

Aug 2012	May 2013	Aug 2013	Oct 2013	Jan 2014	Jun 2014	Aug 2014	Sept 2014*	Oct 2014*	Mar 2015*	Jun 2015*	Aug 2015*	Oct 2015	Jan 2016	
15%	16%	16%	17%	11%	15%	14%	13%	14%	16%	17%	22%	39%	38%	Government, politicians
13%	17%	23%	21%	19%	23%	29%	30%	25%	19%	18%	21%	16%	18%	Education, school
4%	7%	5%	8%	11%	9%	10%	11%	9%	17%	12%	12%	9%	9%	Taxes
30%	11%	21%	17%	26%	21%	16%	16%	20%	15%	18%	15%	12%	8%	Unemployment, personal finances
12%	18%	7%	5%	5%	5%	3%	4%	5%	6%	7%	4%	4%	4%	Economy, finances
2%	3%	3%	2%	1%	1%	2%	1%	2%	3%	2%	3%	2%	3%	Crime, drugs, violence, guns
3%	4%	3%	4%	2%	5%	5%	3%	5%	3%	6%	5%	2%	2%	Energy issues, gas prices
2%	2%	3%	4%	3%	5%	3%	2%	2%	4%	5%	3%	2%	2%	Roads, infrastructure, transportation
3%	3%	6%	8%	4%	3%	2%	2%	2%	4%	1%	1%	2%	2%	Healthcare, insurance
1%	1%	1%	1%	1%	1%	0%	0%	1%	1%	1%	1%	1%	1%	Social issues
1%	1%	1%	0%	2%	1%	1%	1%	1%	2%	1%	2%	0%	1%	Values, morals
1%	3%	1%	1%	1%	1%	1%	4%	1%	1%	6%	1%	1%	1%	Senior issues, social security
1%	1%	0%	1%	1%	1%	1%	0%	1%	1%	1%	1%	1%	1%	Environment
0%	0%	0%	0%	0%	0%	0%	1%	0%	0%	0%	0%	0%	0%	Foreign policy, terrorism, war
1%	1%	1%	2%	1%	1%	1%	2%	1%	1%	0%	1%	1%	0%	Welfare
2%	1%	0%	1%	1%	1%	0%	1%	0%	0%	1%	1%	1%	0%	Retaining, attracting businesses
2%	1%	2%	2%	1%	1%	0%	1%	0%	1%	0%	0%	0%	0%	Civil liberties
0%	0%	0%	0%	0%	0%	1%	0%	0%	0%	0%	0%	0%	0%	Personal illness, health problems, family issues
0%	0%	0%	0%	0%	0%	1%	0%	1%	1%	1%	0%	0%	0%	Immigration
2%	1%	1%	3%	2%	2%	4%	3%	2%	2%	3%	2%	3%	4%	Other
6%	8%	5%	7%	8%	7%	8%	6%	8%	5%	0%	6%	6%	8%	Don't know

* Question asked of registered respondents only

DemPrim. If the 2016 Democratic primary election for U.S. SENATOR were being held today and the candidates included (*rotated*) John Fetterman, Katie McGinty and Joe Sestak, would you vote for John Fetterman, Katie McGinty, Joe Sestak, some other candidate, or aren't you sure how you would vote? (361 registered Democrats)

	Jan 2016	Oct 2015	Aug 2015
Joe Sestak	17%	15%	16%
Katie McGinty	13%	13%	13%
John Fetterman	6%	3%	--
Other Candidate	4%	4%	5%
Don't know	61%	65%	66%

DemPresPrim. If the Democratic primary election for president was being held today and the candidates included (*rotated*) Hillary Clinton, Martin O'Malley, and Bernie Sanders, would you vote for Hillary Clinton, Martin O'Malley, Bernie Sanders, some other candidate, or aren't you sure how you would vote? (361 registered Democrats)

	Jan 2016	Oct 2015
Hillary Clinton	46%	52%
Bernie Sanders	29%	18%
Martin O'Malley	2%	--
Other Candidate	7%	12%
Don't know	16%	17%

RepPresPrim. If the Republican primary election for president was being held today would you vote for (*rotated*) Donald Trump, Ben Carson, Carly Fiorina, Jeb Bush, Ted Cruz, Marco Rubio, Mike Huckabee, Rand Paul, Chris Christie, John Kasich, Rick Santorum, or aren't you sure how you would vote? (276 registered Republicans)

	Jan 2016	Oct 2015
Donald Trump	24%	23%
Ted Cruz	14%	4%
Marco Rubio	11%	13%
Ben Carson	5%	22%
Jeb Bush	5%	3%
Chris Christie	5%	3%
John Kasich	3%	6%
Carly Fiorina	2%	3%
Mike Huckabee	2%	1%
Rand Paul	2%	1%
Rick Santorum	1%	1%
Don't know	26%	20%

Preslss. What issue will matter most to you as you think about choosing a [Republican/Democratic/ candidate for president?

276 Registered
Republicans
Jan 2016

26%	Terrorism, war, foreign policy
14%	Unemployment, economy, finances
10%	Personal characteristic of candidate
9%	Government, politicians
8%	Values and morality
6%	Immigration, illegal immigrants
3%	Unemployment, personal finances
2%	Healthcare, insurance
2%	Taxes
2%	Candidate who will put country back on right track, in general
2%	Civil liberties
1%	Retaining, attracting business
1%	Education, schools
1%	Crime, drugs, violence, guns
1%	Elder issues, social security
1%	Bipartisanship
1%	Environment
1%	Justice system, lawyers
4%	Other
8%	Do not know

361 Registered
Democrats
Jan 2016

15%
17%
7%
8%
2%
0%
6%
12%
3%
2%
2%
0%
4%
3%
3%
3%
2%
1%
4%
8%

PAgov1 Generally speaking, do you think Pennsylvania's state government needs reform, or not? (340 registered voters)

82%	Yes
10%	No
8%	Don't know

PAgov2. How strongly do you feel about this: Very strongly, somewhat strongly, not too strongly, or not strongly at all? (277 voters think reform needed)

64%	Very strongly
32%	Somewhat strongly
3%	Not too strongly
0%	Not at all strongly

PAgov1alt. Do you agree or disagree with the following statement: Pennsylvania's state government needs reform. (393 registered voters)

54%	Strongly agree
28%	Somewhat agree
7%	Somewhat disagree
2%	Strongly disagree
9%	Don't know

PAgov3. What part of the state government do you think most needs to be reformed? (596 voters think reform needed)

- 29% Legislative branch – in general (congress, congressional, house, senate, etc)
- 9% All of it, whole thing
- 7% Legislative branch – reduce size
- 7% Budget approval process, passing a budget
- 6% Executive branch - in general Governor, Governor's office
- 5% Education policy, funding
- 4% Taxes
- 4% Judicial branch/system
- 3% Bi-partisanship, working together
- 3% Term limits
- 1% Pensions
- 1% Local governments
- 1% Structure of government
- 1% Salaries
- 1% Welfare reform
- 8% Other
- 11% Do not know

Budg1. The state has yet to pass a final budget. Who do you think is most responsible for the budget being late?

	The governor	The state legislature	Don't know
Jan 2016	32%	52%	15%
Oct 2015	32%	51%	17%
Aug 2015	29%	54%	17%
Aug 2009	31%	54%	15%
Aug 2007	27%	56%	17%

Budg2. When it comes to making decisions about the state budget, do you TRUST the governor or the state legislature MORE?

	The governor	The state legislature	Don't know
Jan 2016	42%	39%	19%
Oct 2015	43%	38%	19%
Aug 2015	42%	39%	20%
Aug 2009	36%	48%	16%
Aug 2007	39%	48%	13%

Rate_Gov. How would you rate the way that Tom Wolf is handling his job as Governor? Would you say he is doing an...

	Excellent job	Good job	Only a fair job	Poor job	Don't know
Jan 2016	5%	28%	36%	26%	6%
Oct 2015	6%	30%	37%	21%	6%
Aug 2015	7%	32%	34%	17%	10%
Jun 2015	8%	31%	34%	16%	13%
Mar 2015	7%	31%	29%	14%	19%

Rate_StL. What kind of job do you think the state legislature is doing overall? Would you say it is doing...

	Excellent job	Good job	Only a fair job	Poor job	Don't know
Jan 2016	1%	14%	41%	39%	6%
Aug 2013	0%	11%	54%	29%	6%
Jan 2010	0%	16%	51%	23%	10%
Oct 2009	1%	14%	48%	30%	7%
Aug 2009	0%	18%	58%	20%	4%
Jun 2009	1%	26%	49%	18%	6%
Aug 2007	1%	25%	53%	16%	5%
Jun 2007	1%	25%	46%	21%	7%
Feb 2007	1%	23%	48%	18%	10%
May 2006	1%	19%	51%	22%	7%

Rate_Rep. Would you like to see your state representative in Harrisburg re-elected in the next election, or not?

	Yes	No	Don't know
Jan 2016	39%	34%	27%
Aug 2013	37%	33%	30%
Oct 2009	44%	30%	26%
Aug 2009	46%	29%	25%
May 2006	50%	30%	20%

Chg_Hous. Regardless of how you feel about your own state representative, would you like to see most members of the state house of representatives re-elected in the next election, or not?

	Yes	No	Don't know
Jan 2016	19%	61%	20%
Aug 2013	20%	56%	24%
Oct 2009	24%	54%	22%
Aug 2009	29%	52%	19%
May 2006	27%	53%	20%

RateSenT. How would you rate the way that Pat Toomey is handling his job as U.S. SENATOR? Would you say he is doing an...

	Excellent job	Good job	Only a fair job	Poor job	Don't know
Jan 2016	4%	29%	34%	17%	18%
Oct 2015	4%	31%	37%	13%	15%
Aug 2015	6%	34%	32%	11%	18%
Jun 2015	5%	29%	33%	14%	20%
Mar 2015	3%	28%	35%	13%	21%
Oct 2013	4%	18%	34%	19%	25%
Aug 2013	4%	20%	42%	9%	26%
May 2013	4%	27%	39%	10%	21%
Oct 2011	3%	29%	40%	11%	18%
Aug 2011	5%	24%	37%	14%	20%
Mar 2011	3%	25%	36%	10%	27%

RatePres. How would you rate the way that Barack Obama is handling his job as president?
 Would you say he is doing... an excellent job, a good job, only a fair job, or a poor job as President?

	Excellent job	Good job	Only a fair job	Poor job	Don't know
Jan 2016	13%	28%	20%	39%	1%
Oct 2015	14%	26%	18%	42%	0%
Aug 2015	12%	26%	16%	45%	1%
Jun 2015	12%	25%	20%	43%	1%
Mar 2015	11%	24%	21%	43%	1%
Oct 2014	8%	24%	27%	41%	0%
Sept 2014	6%	25%	25%	43%	1%
Aug 2014	7%	27%	28%	37%	1%
Jun 2014	7%	27%	22%	42%	1%
Jan 2014	6%	24%	31%	37%	1%
Oct 2013	11%	28%	21%	39%	1%
Aug 2013	8%	26%	23%	42%	1%
May 2013	14%	30%	22%	33%	1%
Feb 2013	14%	28%	23%	34%	1%
Oct 2012	17%	29%	20%	33%	1%
Sep 2012	18%	29%	19%	33%	0%
Aug 2012	12%	31%	23%	33%	1%
June 2012	13%	29%	30%	28%	1%
Feb 2012	11%	26%	29%	35%	0%
Jan 2012	9%	31%	29%	30%	0%
Oct 2011	9%	28%	31%	32%	1%
Aug 2011	9%	25%	33%	33%	1%
Mar 2011	7%	28%	30%	34%	1%
Oct 2010	8%	24%	31%	36%	1%
Sep 2010	10%	26%	33%	30%	0%
Aug 2010	9%	28%	28%	35%	1%
May 2010	14%	24%	32%	29%	1%
Mar 2010	12%	28%	27%	32%	1%
Feb 2010	12%	29%	32%	27%	0%
Jan 2010	11%	27%	32%	29%	1%
Oct 2009	17%	23%	31%	28%	1%
Aug 2009	14%	33%	29%	24%	0%
Jun 2009	20%	35%	25%	19%	1%
Mar 2009	23%	37%	22%	14%	4%
Feb 2009	25%	30%	23%	13%	9%

IntGovRole* Please tell me whether you agree or disagree with each of the following statements (rotated)

Jan 2016	Strongly Agree	Somewhat Agree	Somewhat Disagree	Strongly Disagree	Don't know
The government must first and foremost protect all people from harm.	66%	22%	7%	4%	1%
When the government makes laws, the number one principle should be ensuring that everyone is treated fairly.	72%	18%	5%	3%	2%
Loyalty to one's group is more important than one's individual concerns.	11%	15%	25%	44%	6%
When the government makes laws, those laws should always respect the traditions and heritage of the country.	44%	27%	19%	7%	3%
The government should try to help people live virtuously and avoid sin.	16%	14%	17%	49%	4%

GovRole2. Do you believe the actions of the United States government should mostly be aimed at maintaining and representing a common constitution and legal order or do you believe the actions of the United States government should be mostly aimed at maintaining and representing a common heritage, religion, and tradition?

- 80% Constitution and legal order
- 15% Heritage, religion, and tradition
- 6% Don't know

DEMO I now have a final few questions for statistical purposes only.

CNTY. Region of state (What is the name of the county you live in?)

- 26% Central
- 23% Southeast
- 12% Northeast
- 11% Southwest
- 10% Philadelphia
- 10% Allegheny
- 9% Northwest

AGE. What was your age on your last birthday?

- 3% 18-24
- 6% 25-34
- 9% 35-44
- 16% 45-54
- 25% 55-64
- 42% 65 and older

EDUC. What was the highest grade level of schooling you have completed?

- 1% Non high school graduate
- 23% High school graduate or GED
- 17% Some college
- 12% Two-year or tech degree
- 24% Four year college degree
- 24% Post graduate degree

MAR. What is your CURRENT marital status...are you single, married, separated, divorced, or a widower?

- 69% Married
- 15% Single, Never Married
- 9% Widow or widower
- 7% Divorced
- 1% Separated

IDEO. Politically speaking, do you consider yourself to be a liberal, a moderate, or a conservative?

	Liberal	Moderate	Conservative	Don't know
Jan 2016	22%	39%	36%	4%
Oct 2015	22%	38%	37%	4%
Aug 2015	21%	36%	40%	3%
Jun 2015	23%	35%	39%	4%
Oct 2014	23%	37%	36%	3%
Sept 2014	22%	36%	38%	5%
Aug 2014	20%	39%	36%	5%
Jun 2014	26%	36%	34%	5%
Jan 2014	24%	43%	28%	5%
Oct 2013	24%	39%	31%	6%
Aug 2013	22%	42%	33%	3%
May 2013	24%	39%	31%	6%
Feb 2013	26%	36%	35%	3%
Oct 2012	22%	39%	35%	5%
Sep 2012	26%	34%	35%	5%
Aug 2012	21%	40%	36%	4%
June 2012	25%	34%	36%	5%
Feb 2012	17%	39%	40%	4%
Jan 2011	21%	39%	36%	4%
Oct 2011	20%	39%	33%	8%
Aug 2011	24%	32%	37%	7%
Mar 2011	16%	33%	41%	10%
Oct 2010	16%	37%	39%	8%
Sep 2010	15%	34%	40%	10%
Aug 2010	19%	32%	40%	9%
May 2010	19%	32%	40%	9%
Mar 2010	17%	35%	40%	8%
Feb 2010	21%	33%	37%	9%
Jan 2010	19%	30%	42%	9%

PARTY. Regardless of how you are registered... in politics, as of today, do you think of yourself as a Republican, a Democrat, or an Independent?

17%	Strong Republican
11%	Republican
14%	Lean Republican
8%	Independent
13%	Lean Democrat
11%	Democrat
26%	Strong Democrat
1%	Don't know

GUN. Are you a gun owner?

36%	Yes
63%	No
1%	Don't know

GUN2. Generally speaking, do you favor or oppose creating more laws that regulate gun ownership?

	Strongly favor	Somewhat favor	Somewhat oppose	Strongly oppose	Don't know
Jan 2016	40%	15%	13%	29%	3%
Oct 2015	43%	13%	10%	31%	4%
Aug 2015	40%	14%	10%	32%	5%
Jun 2015	38%	13%	12%	33%	5%
Oct 2014	42%	12%	8%	37%	2%
Sept 2014	39%	14%	10%	32%	5%
Aug 2014	39%	14%	10%	31%	6%
Jun 2014	43%	12%	9%	31%	5%
Jan 2014	42%	12%	9%	32%	6%
Oct 2013	46%	16%	9%	24%	5%
Aug 2013	39%	12%	13%	33%	4%
May 2013	43%	14%	11%	30%	3%
Feb 2013*	43%	15%	10%	28%	4%
Aug 2007	40%	20%	14%	23%	3%
Jun 2007	39%	15%	12%	31%	3%
Feb 2007	39%	17%	15%	26%	3%
Oct 2006*	35%	16%	15%	26%	8%
Sep 2006*	34%	15%	17%	28%	6%
Aug 2006*	37%	15%	14%	27%	7%
May 2006*	37%	14%	16%	27%	6%
Feb 2006	35%	19%	17%	22%	7%
Nov 2005	38%	20%	14%	20%	8%
Sep 2005	39%	16%	13%	25%	8%
Jun 2005	39%	17%	16%	23%	6%
Oct 2004*	33%	19%	19%	23%	7%
Sep 2004*	38%	19%	15%	20%	8%
Aug 2004*	35%	20%	15%	23%	7%
Mar 2004*	42%	17%	14%	21%	7%
Oct 2002*	34%	18%	15%	26%	7%
Sep 2002*	28%	20%	14%	29%	9%
Jun 2002*	40%	14%	11%	28%	7%
Oct 2001*	33%	22%	15%	24%	6%
Apr 2001*	41%	18%	14%	22%	6%
Oct 2000*	37%	18%	15%	22%	9%
Feb 2000*	41%	19%	11%	24%	5%

* Question asked of registered respondents only

BG1. Do you favor or oppose a federal law requiring background checks on all potential gun buyers, including those who purchase guns at gun shows or online?

76% Strongly favor
 12% Somewhat favor
 4% Somewhat oppose
 7% Strongly oppose
 2% Don't know

BG2. Do you favor or oppose efforts to include more information about citizens' mental health into the background check system?

68%	Strongly favor
17%	Somewhat favor
5%	Somewhat oppose
5%	Strongly oppose
5%	Don't know

Hisp. Are you Hispanic or Latino, or not?

3%	Yes
97%	No

RACE. Which of the following categories best describes your racial background?

93%	White
7%	Non-white

REL. Do you consider yourself to be Protestant, Catholic, some other religion, or not affiliated with any religion?

36%	Protestant
33%	Catholic
13%	Some other religion
18%	Not affiliated with any religion
1%	Don't know

BAC. Do you consider yourself to be a born-again Christian or fundamentalist, or not?

25%	Yes
73%	No
2%	Don't know

WORK. Are you currently working fulltime, part-time, going to school, keeping house or something else?

41%	Full-time
37%	Retired
10%	Part-time
3%	Keeping house
3%	Disabled
2%	Going to school
2%	Unemployed

INCOME. And, just for statistical purposes, we need to know if your total family income is above or below \$50,000 per year?

10%	Under \$25,000
11%	\$25-\$35,000
12%	\$35-50,000
19%	\$50-75,000
16%	\$75-100,000
26%	Over \$100,000
6%	Don't know

DONE. Sex of respondent:

48%	Male
52%	Female