

FRANKLIN & MARSHALL

**September 2018**  
**Franklin & Marshall**  
**College Poll**

**SUMMARY OF FINDINGS**

**Prepared by:**

**Center for Opinion Research**  
**Floyd Institute for Public Policy**  
**Franklin & Marshall College**

## Table of Contents

<b>TABLE OF CONTENTS</b> .....	<b>2</b>
<b>KEY FINDINGS</b> .....	<b>3</b>
<i>VOTER INTEREST AND TURNOUT</i> .....	<i>4</i>
<i>PRESIDENT TRUMP: JOB PERFORMANCE</i> .....	<i>4</i>
<i>SENATOR CASEY: JOB PERFORMANCE AND RE-ELECTION</i> .....	<i>8</i>
<i>GOVERNOR WOLF: JOB PERFORMANCE AND RE-ELECTION</i> .....	<i>8</i>
<i>THE ELECTORAL CONTEXT IN PENNSYLVANIA</i> .....	<i>10</i>
<b>METHODOLOGY</b> .....	<b>12</b>
<i>METHODOLOGICAL NOTES</i> .....	<i>13</i>
<b>ATTACHMENT A-1</b> .....	<b>14</b>
<b>ATTACHMENT A-2</b> .....	<b>15</b>
<b>MARGINAL FREQUENCY REPORT</b> .....	<b>16</b>

## Key Findings

The September 2018 Franklin & Marshall College Poll finds that three in five (60%) of the state's registered voters say they are "very interested" in the 2018 elections, which is higher than in our August survey. At the moment, more Democrats (64%) than Republicans (58%) or independents (49%) say they are "very interested," although interest is higher among all three groups than it was in August.

Voters' evaluations of how well key political figures are doing their jobs have remained remarkably stable compared to prior surveys. About one in two (50%) registered voters in Pennsylvania believes Governor Wolf is doing an "excellent" or "good" job as governor. Two in five (42%) registered voters believe Senator Casey is doing an "excellent" or "good" job as the state's US Senator. About one in three (37%) registered voters in Pennsylvania believes President Trump is doing an "excellent" or "good" job as president.

President Trump continues to be an essential motivating force in the upcoming mid-term elections. More registered voters prefer the Democratic candidate for U.S. House (51%) than the Republican candidate for U.S. House (36%); three in four (74%) of those who plan to vote for a Democratic candidate are casting their ballot mainly as a vote against President Trump and Republicans in Congress, while four in five (80%) of those who plan to vote for a Republican candidate are casting their ballot mainly as a vote to support President Trump and the Republicans in Congress. The link between congressional choice as support or opposition to the President has intensified since August. Moreover, one of the most common reasons voters provide for supporting their U.S. Senate choice relates to the President.

## ***Voter Interest and Turnout***

About three in five (60%) of the state's registered voters say they are "very interested" in the 2018 elections. Voter interest is related to both political party and political ideology. At the moment, more Democrats (64%) than Republicans (58%) or independents (49%) say they are "very interested," although interest is higher among all three groups than it was in August. More self-described liberals (74%) than conservatives (61%) or moderates (49%) say they are "very interested."

The outcomes of the 2018 mid-terms will be driven by differences in voter turnout among partisans, but likely voter models based on administrative data and self-described interest produce different results. For example, two in five (37%) voters in the sample have voted in the past three general elections; this would produce an electorate with similar proportions of Republicans (45%) and Democrats (43%). But the electorate would have more Democrats (49%) than Republicans (39%) if self-described interest and intention to vote is used to measure turnout.

## ***President Trump: Job Performance***

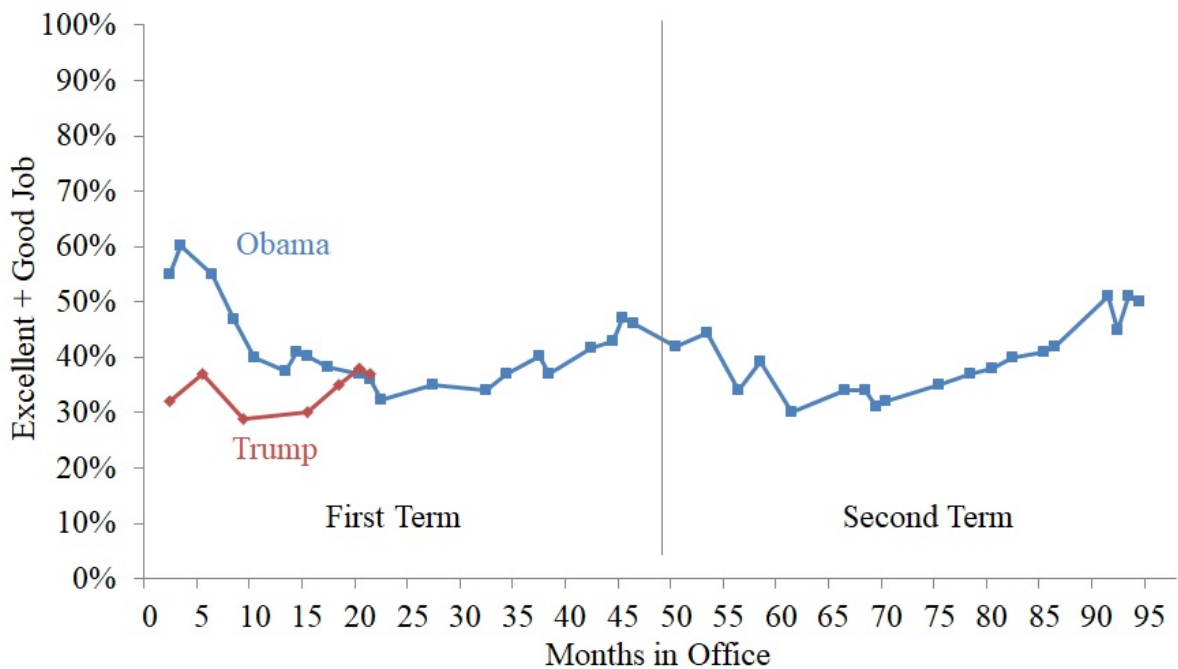
About two in five (37%) registered voters in Pennsylvania believes President Trump is doing an "excellent" or "good" job as president, which is similar to his ratings in recent surveys. Figure 1 compares President Trump's job ratings to President Obama's job ratings; President Trump's current rating is about the same as President Obama's rating in Pennsylvania at a similar point in his Presidency. A majority of Republicans (76%) rate the President's performance positively, while fewer Democrats (7%) or independents (27%) do so. Conservatives (81%) are more likely than moderates (24%) or liberals (4%) to give the President positive job approval ratings.

Figure 1:

---

### **Comparison of Presidents' Job Performance Ratings, Pennsylvania voters September 2018**

*How would you rate the way that [fill President] is handling his job as President? Would you say he is doing... an excellent job, a good job, only a fair job, or a poor job as President?*



Source: Survey conducted September 17-23, 2018

Center for  
**OPINION RESEARCH** FRANKLIN & MARSHALL  
COLLEGE

About one in three (30%) voters say they have had an increase in their income because of the tax cut passed in December, although most (58%) of these respondents report seeing only a small increase. Most respondents do not believe (45%) or do not know (18%) that the Trump Administration has made significant changes to the Affordable Care Act (ACA). Half (53%) of those who believe administrative changes to the ACA have been made say those changes will make the healthcare system worse for them. Voters' judgments about tax cuts and administrative changes to the Affordable Care Act relate to voters' ratings of the President and have not changed since prior surveys.

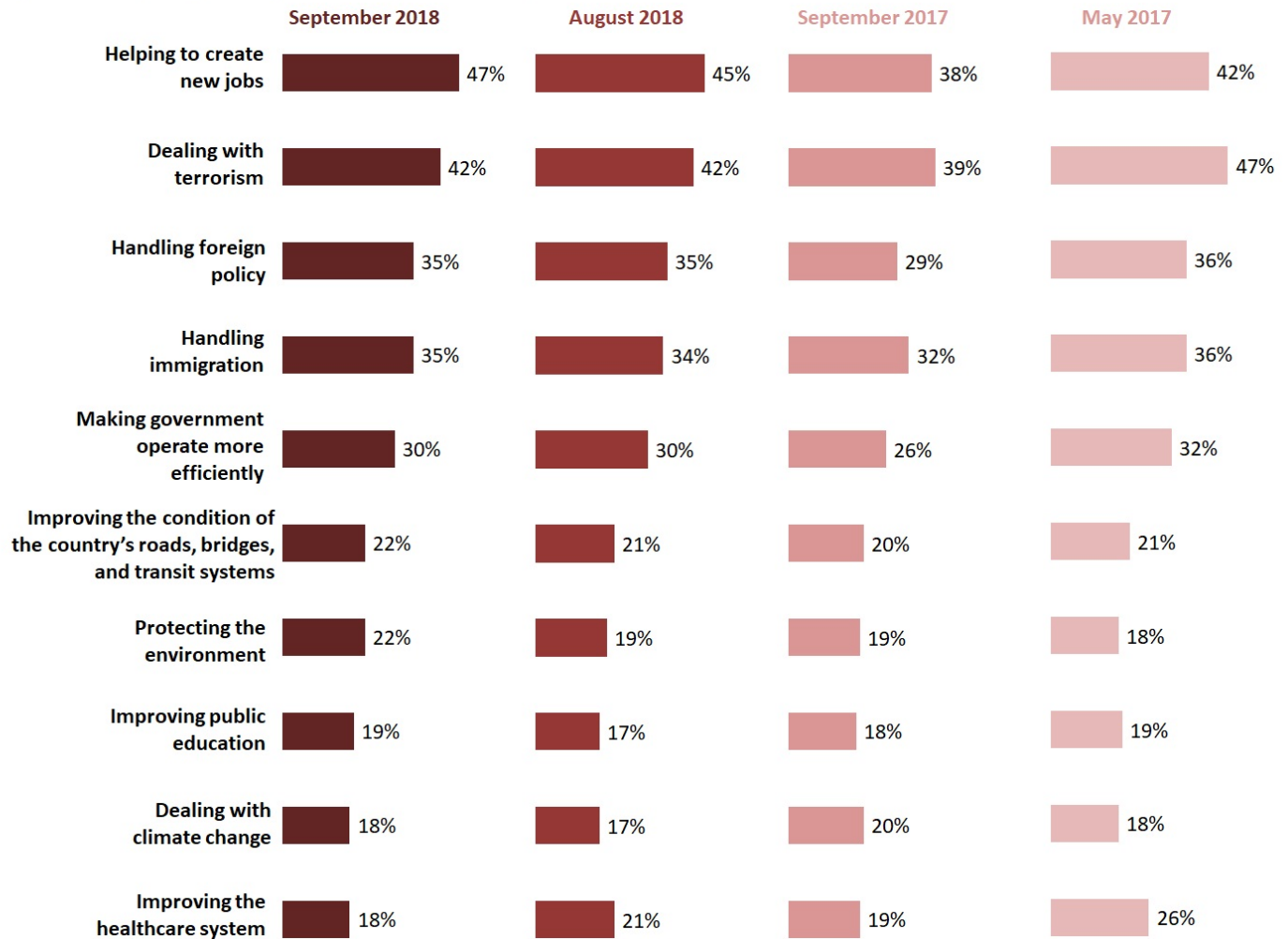
President Trump is perceived as doing best at creating new jobs and dealing with terrorism. He receives his lowest ratings for improving the healthcare system, deal with climate change, and improving public education (Figure 2). These specific ratings have remained remarkably stable, as is true of his overall approval ratings.

President Trump continues to be an essential motivating force in the upcoming mid-term elections. More registered voters prefer the Democratic candidate for U.S. House (51%) than the Republican candidate for U.S. House (36%); three in four (74%) of those who plan to vote for a Democratic candidate are casting their ballot mainly as a vote against President Trump and Republicans in Congress, while four in five (80%) of those who plan to vote for a Republican candidate are casting their ballot mainly as a vote to support President Trump and the Republicans in Congress. The link between congressional choice as support or opposition to the President has intensified since August. Moreover, one of the most common reasons voters provide for supporting their U.S. Senate choice relates to the President.

**Figure 2:**

### ***Trump Administration Performance on Key Issues, Registered Pennsylvania Voters***

*I am going to read a list of problems and issues. For each one, please tell me how well President Trump's administration has performed, using an A for excellent, B for very good, C for average, D for below average or F for failing.*



**% Rating Trump Administration Performance as "A" or "B"**

Source: Surveys conducted September 17-23, 2018; August 20-26, 2018; September 13-18, 2017; May 1 – 7, 2017

### ***Senator Casey: Job Performance and Re-Election***

Two in five (42%) registered voters in Pennsylvania believe Senator Casey is doing an “excellent” or “good” job as the state’s U.S. Senator, which is similar to his ratings in recent surveys. Two-thirds (66%) of registered Democrats, one in three (32%) independents, and one in five (17%) Republicans provide positive ratings of the Senator’s job performance. Senator Casey (50%) currently holds a lead over his Republican challenger, Representative Lou Barletta (33%), among likely voters, although nearly one in six (15%) voters remains undecided. The dynamics of the race have changed little since our prior surveys and reflect the fact that one in two (51%) voters don’t know enough about Mr. Barletta to have an opinion.

### ***Governor Wolf: Job Performance and Re-Election***

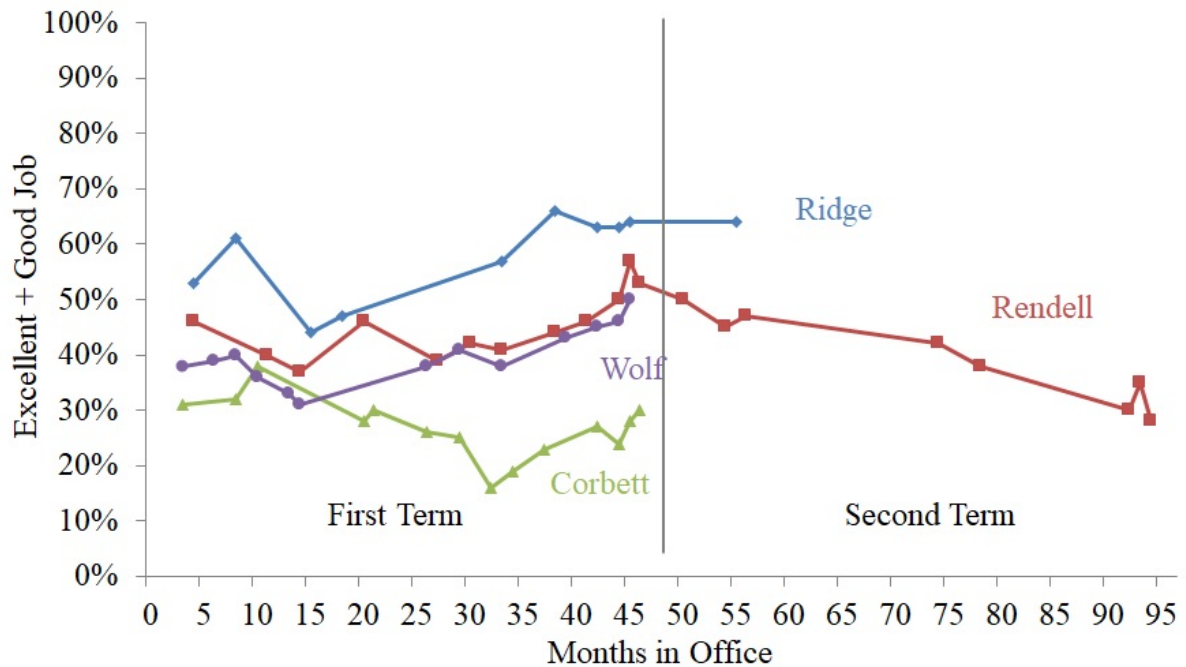
About one in two (50%) registered voters in Pennsylvania believes Governor Wolf is doing an “excellent” or “good” job as governor, which is similar to his ratings in prior surveys. Three in four (74%) Democrats, one in two (51%) independents, and one in five (19%) Republicans provide positive ratings of the Governor’s job performance. Figure 3 compares Governor Wolf’s job performance ratings to his recent predecessors. Wolf’s job performance rating is similar to Governor Rendell’s and better than Governor Corbett’s at similar points during their terms in office.



Figure 3:

### Comparison of Governors' Job Performance Ratings, Pennsylvania voters September 2018

*How would you rate the way that [fill Governor] is handling his job as Governor? Would you say he is doing... an excellent job, a good job, only a fair job, or a poor job as Governor?*



Source: Survey conducted September 17-23, 2018

Center for  
OPINION RESEARCH  
FRANKLIN & MARSHALL  
COLLEGE

Governor Wolf (52%) currently holds a comfortable lead over his Republican challenger, former State Senator Scott Wagner (30%), among likely voters, although nearly one in six (17%) voters remains undecided. The dynamics of the race have changed little since prior surveys and reflect the fact that two in five (40%) of the state's voters don't know enough about Senator Wagner to have an opinion.

## ***The Electoral Context in Pennsylvania***

Comparing 2018 electoral indicators to indicators from the prior three gubernatorial elections in Pennsylvania provides some context about what might be expected this year. In the 2006 election, Democrats retained the governor's office, defeated an incumbent Republican U.S. senator, and picked up four U.S. house seats held by Republicans in a year that showed many favorable indicators for them. Conversely, in 2010 these electoral indicators showed Republicans had a real advantage and Republicans won the governor's office, a U.S. Senate seat, and 12 of 19 U.S. House seats. In 2014, the electoral indicators gave no clear advantage to either party and this was reflected in the final vote: Democrats managed to recapture the governor's office while Republicans captured 13 of the state's 18 U.S. House seats.

Currently, optimism about the direction of the state is similar to 2006, and much better than in 2010 or 2014. The job performance rating for the incumbent governor is also similar to 2006, when the relatively popular incumbent Ed Rendell won re-election, and is much better than Governor Corbett's job performance ratings were in 2014. The incumbent president's popularity is similar for all these elections, which was an advantage for Democrats in 2006, a disadvantage in 2010 and 2014, and is again an advantage for Democrats in this cycle. President Trump's relatively low approval ratings could hurt Republican candidates this year. At the moment, Democrats appear to have an advantage in voter interest and turnout (see Table 1).

Table 1:

***Selected Pennsylvania Election Indicators:  
Registered Voters, 2006, 2010, 2014, and 2018***

	Aug 2006	Sep 2006	Oct 2006	Aug 2010	Sep 2010	Oct 2010	Aug 2014	Sep 2014	Oct 2014	Aug 2018	Sep 2018
<b>Pennsylvania headed in right direction</b>	50%	52%	47%	30%	31%	27%	27%	29%	28%	46%	51%
<b>Most important problem</b>	Taxes Economy	--	--	Economy	Economy	Economy	Education	Education	Education	Government, Education, Economy	Government, Education, Economy
<b>Presidential job approval rating</b> (% excellent + good)	Bush: 33%	Bush: 36%	Bush: 31%	Obama: 37%	Obama: 36%	Obama: 32%	Obama: 34%	Obama: 31%	Obama: 32%	Trump: 38%	Trump: 37%
<b>Governor's job approval rating</b> (% excellent + good)	Rendell: 50%	Rendell: 57%	Rendell: 53%	Rendell: 30%	Rendell: 35%	Rendell: 28%	Corbett: 24%	Corbett: 27%	Corbett: 30%	Wolf: 46%	Wolf: 50%
<b>Generic ballot</b> (Democrat candidate % - Republican candidate %)	+7 D	--	--	+4 D	+3 D	+4 R	+6 D	+4 D	+6 D	+9 D	+15 D
<b>Generic ballot: Undecided Voters</b> (Some other candidate % + Aren't sure how you would vote %)	27%	--	--	25%	29%	22%	28%	24%	19%	13%	13%
<b>Gubernatorial Election: Undecided Voters</b> (Some other candidate % + Aren't sure how you would vote %)	13%	14%	9%	43%	37%	28%	26%	21%	18%	15%	19%
<b>U.S. Senate Election: Undecided Voters</b> (Some other candidate % + Aren't sure how you would vote %)	17%	17%	9%	42%	40%	29%	--	--	--	21%	20%
<b>Party Identification</b> (Democrat ID % - Republican ID %)	+6 D	+4 D	+5 D	+7 D	+2 R	+2 R	+8 D	+6 D	+6 D	+10 D	+12 D
<b>Party Identification</b> (% Independent ID)	5%	5%	6%	13%	13%	12%	9%	10%	10%	6%	6%
<b>% Very interested and certain to vote</b> (Democrat registration % - Republican registration %)	+2% D	+1% D	+1% D	+8% R	+10% R	+13% R	+4 D	+1 R	+9 D	+19 D	+10 D

Note: The table displays registered voters. Surveys in 2006 and 2010 used random-digit-dialing. Surveys in 2014 and 2018 used registered voter lists.

## Methodology

The survey findings presented in this release are based on the results of interviews conducted September 17 - 23, 2018. The interviews were conducted at the Center for Opinion Research at Franklin & Marshall College on behalf of the Center for Politics and Public Affairs. The poll was designed and administered by the staff of the Center for Opinion Research. The data included in this release represent the responses of 545 Pennsylvania registered voters, including 256 Democrats, 213 Republicans, and 76 independents. The sample of registered voters was obtained from L2, formerly Labels & Lists. All sampled respondents were notified by letter about the survey. Interviews were completed over the phone and online depending on each respondent's preference. Survey results were weighted (age, gender, education, and party registration) using an iterative weighting algorithm to reflect the known distribution of those characteristics as reported by the Pennsylvania Department of State and Pennsylvania exit polls.

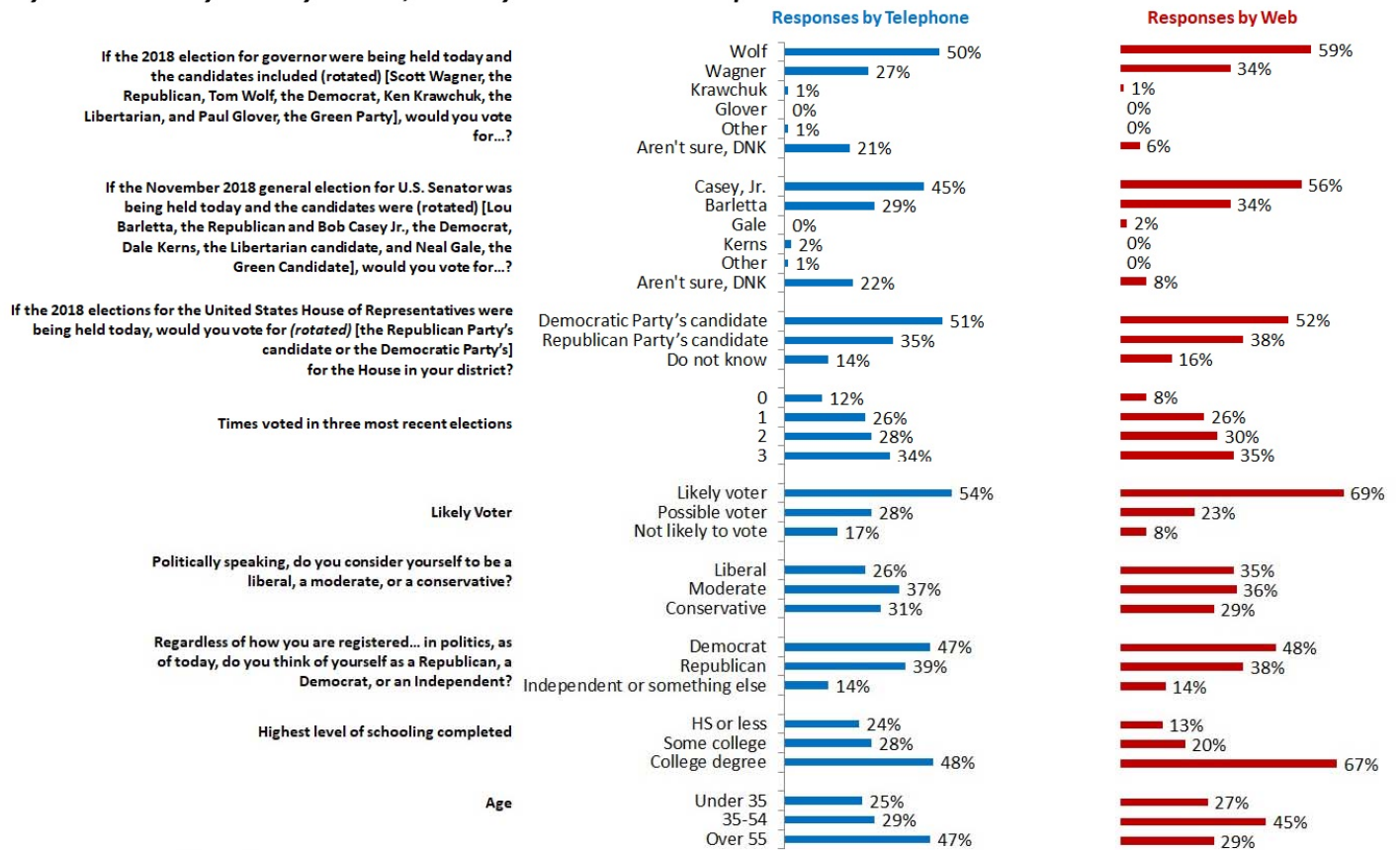
The sample error for this survey is +/- 6.1 percentage points when the design effects from weighting are considered. In addition to sampling error, this poll is also subject to other sources of non-sampling error. Generally speaking, two sources of error concern researchers most. Non-response bias is created when selected participants either choose not to participate in the survey or are unavailable for interviewing. Response errors are the product of the question and answer process. Surveys that rely on self-reported behaviors and attitudes are susceptible to biases related to the way respondents process and respond to survey questions.

## Methodological Notes

There are notable differences in the characteristics of respondents depending on how they completed the survey (see Figure 4). The web respondents are more educated, are more liberal, and appear to be more likely to vote than telephone respondents. These demographic differences result in both Democratic candidates performing better among web-respondents than among telephone respondents.

Figure 4:

### Key Variables by Survey Mode, Pennsylvania Voters September 2018



Source: Survey conducted September 17-23, 2018



## Attachment A-1

### **Gubernatorial Election: Registered Voters, Pennsylvania, September 2018**

*If the 2018 election for governor were being held today and the candidates included (rotated) [Scott Wagner, the Republican, Tom Wolf, the Democrat, Ken Krawchuk, the Libertarian, and Paul Glover, the Green Party], would you vote for [Scott Wagner, Tom Wolf, Ken Krawchuk, Paul Glover], some other candidate, or aren't you sure how you would vote?*

	Tom Wolf	Scott Wagner	Ken Krawchuk	Paul Glover	Other Candidate	Do Not Know
<b>Party*</b>						
Republican	14%	62%	2%	0%	1%	21%
Democrat	82%	1%	1%	0%	1%	14%
Independent or something else	54%	23%	0%	0%	0%	24%
<b>Ideology*</b>						
Liberal	85%	2%	0%	0%	2%	11%
Moderate	63%	15%	1%	0%	1%	21%
Conservative	10%	70%	2%	0%	1%	17%
<b>Gender*</b>						
Male	50%	34%	2%	0%	1%	12%
Female	53%	22%	0%	0%	1%	24%
<b>Age**</b>						
Under 35	55%	18%	2%	0%	2%	23%
35-54	54%	26%	2%	0%	0%	18%
Over 55	49%	35%	0%	0%	1%	15%
<b>Education*</b>						
HS or less	39%	31%	0%	0%	0%	30%
Some college	45%	33%	2%	0%	2%	18%
College degree	60%	24%	1%	0%	1%	13%
<b>Income*</b>						
Under 35	49%	19%	0%	0%	3%	29%
35-75	53%	35%	1%	0%	1%	9%
Over 75	52%	29%	2%	0%	0%	17%
<b>Race*</b>						
White	51%	30%	1%	0%	0%	18%
Nonwhite	65%	10%	2%	0%	5%	18%
<b>Marital Status*</b>						
Single, Never Married	60%	16%	0%	0%	2%	22%
Married	49%	31%	2%	0%	1%	17%
Not currently married	47%	38%	0%	0%	0%	15%
<b>Religious Affiliation*</b>						
Protestant	38%	44%	2%	0%	0%	16%
Catholic	47%	35%	1%	0%	1%	15%
Other, unaffiliated	64%	14%	1%	0%	1%	20%
<b>Born Again Christian or Fundamentalist*</b>						
Yes	32%	45%	2%	0%	0%	21%
No	59%	22%	1%	0%	1%	17%
<b>Region*</b>						
Philadelphia	71%	6%	2%	0%	4%	17%
Northeast	49%	33%	0%	0%	0%	19%
Allegheny	77%	16%	3%	0%	0%	5%
Southwest	28%	43%	10%	0%	3%	16%
Northwest	27%	45%	0%	0%	2%	25%
Central	48%	34%	0%	0%	0%	18%
Southeast	59%	20%	0%	0%	0%	21%
<b>Employment*</b>						
Fulltime	54%	26%	2%	0%	0%	18%
Other	56%	20%	0%	0%	2%	23%
Retired	46%	38%	1%	0%	1%	15%

\* p<0.01

\*\* p<0.05

Source: Survey conducted September 17 - 23, 2018

## Attachment A-2

### ***U.S. Senate Election: Registered Voters, Pennsylvania, September 2018***

*If the November 2018 general election for U.S. Senator was being held today and the candidates were (rotated) [Lou Barletta, the Republican and Bob Casey Jr., the Democrat, Dale Kerns, the Libertarian candidate, and Neal Gale, the Green Candidate], would you vote for: [Lou Barletta, Bob Casey, Jr., Dale Kerns, Neal Gale], some other candidate, or aren't you sure how you would vote?*

	Lou Barletta	Bob Casey, Jr.	Dale Kerns	Neal Gale	Other Candidate	Do Not Know
<b>Party*</b>						
Republican	65%	14%	3%	0%	1%	17%
Democrat	2%	77%	0%	1%	0%	19%
Independent or something else	24%	40%	4%	0%	3%	29%
<b>Ideology*</b>						
Liberal	0%	82%	0%	3%	0%	15%
Moderate	18%	53%	2%	0%	0%	27%
Conservative	73%	9%	3%	0%	2%	13%
<b>Gender*</b>						
Male	36%	44%	3%	1%	1%	14%
Female	25%	50%	0%	0%	1%	24%
<b>Age*</b>						
Under 35	17%	41%	6%	3%	2%	33%
35-54	26%	55%	0%	0%	1%	18%
Over 55	40%	46%	1%	0%	0%	13%
<b>Education*</b>						
HS or less	39%	36%	0%	0%	2%	23%
Some college	32%	41%	2%	0%	0%	25%
College degree	25%	56%	2%	1%	1%	16%
<b>Income*</b>						
Under 35	22%	46%	1%	0%	3%	29%
35-75	36%	41%	2%	3%	0%	18%
Over 75	30%	53%	1%	0%	1%	15%
<b>Race**</b>						
White	32%	46%	2%	1%	1%	19%
Nonwhite	12%	66%	1%	0%	0%	21%
<b>Marital Status*</b>						
Single, Never Married	14%	49%	3%	3%	2%	30%
Married	36%	46%	1%	0%	1%	17%
Not currently married	35%	52%	1%	0%	0%	12%
<b>Religious Affiliation*</b>						
Protestant	46%	32%	3%	0%	2%	16%
Catholic	39%	46%	1%	0%	0%	14%
Other, unaffiliated	14%	60%	1%	2%	0%	23%
<b>Born Again Christian or Fundamentalist*</b>						
Yes	42%	30%	2%	0%	3%	22%
No	24%	55%	2%	1%	0%	18%
<b>Region*</b>						
Philadelphia	4%	67%	1%	3%	0%	24%
Northeast	39%	35%	5%	0%	0%	21%
Allegheny	18%	76%	0%	0%	0%	6%
Southwest	45%	28%	10%	0%	0%	17%
Northwest	38%	41%	0%	0%	0%	21%
Central	37%	38%	1%	1%	2%	21%
Southeast	23%	60%	0%	0%	0%	16%
<b>Employment*</b>						
Fulltime	28%	50%	3%	0%	1%	19%
Other	18%	47%	0%	3%	1%	30%
Retired	44%	43%	1%	0%	0%	12%

\* p<0.01

\*\* p<0.05

Source: Survey conducted September 17-23, 2018

## Marginal Frequency Report

Responses may not total 100% due to rounding.

**REG.** Some people are registered to vote, and many others are not. Are you currently registered to vote at your present address?

Yes	100%
No	0%

**RegPARTY.** Are you currently registered as a Republican, a Democrat, an Independent, or as something else?

Republican	39%
Democrat	47%
Independent	13%
Something else	1%

**Vote\_Nov.** Many people will vote in the election for governor and congress in November, however, many other people will not. What would you say are the chances you will vote in the November election? Are you certain to vote, will you probably vote, are the chances fifty-fifty you will vote, or don't you think that you will vote in the November election?

	Sep 2018	Aug 2018	Jun 2018
Certain to vote	83%	79%	76%
Will probably vote	10%	14%	12%
Chances are fifty-fifty	4%	4%	8%
Don't think will vote	4%	2%	4%
Do not know	0%	1%	0%

**Pol\_Int.** Some people don't pay much attention to political campaigns. How about you? Would you say that you are...very much interested, somewhat interested or not very interested in the 2018 elections?

	Sep 2018	Aug 2018	Jun 2018	Mar 2018
Very much interested	60%	54%	55%	48%
Somewhat interested	32%	37%	40%	43%
Not very interested	9%	8%	6%	8%
Do not know	0%	1%	0%	0%



Please let me know your opinion of some people involved in politics today. Is your opinion of [FILL name] favorable, unfavorable, undecided, or haven't you heard enough about [FILL name] to have an opinion? (rotated)

	Strongly favorable	Somewhat favorable	Somewhat unfavorable	Strongly unfavorable	Undecided	Don't know
<b>TOM WOLF</b>						
<b>Sep 2018</b>	<b>27%</b>	<b>27%</b>	<b>14%</b>	<b>19%</b>	<b>4%</b>	<b>9%</b>
Aug 2018	20%	28%	15%	21%	3%	13%
Jun 2018	19%	30%	14%	19%	5%	13%
Mar 2018	19%	31%	16%	16%	6%	12%
Sep 2017	16%	20%	8%	34%	12%	10%
Feb 2017	12%	29%	15%	19%	13%	11%
Feb 2016	14%	25%	16%	27%	9%	9%
Oct 2015	15%	23%	13%	20%	16%	13%
Aug 2015	22%	21%	9%	17%	18%	13%
Jun 2015	21%	23%	10%	17%	19%	11%
Mar 2015	22%	18%	11%	16%	22%	11%
Oct 2014	20%	20%	7%	18%	18%	16%
Sep 2014	19%	21%	9%	13%	18%	21%
Aug 2014	18%	19%	7%	10%	22%	24%
Jun 2014	15%	20%	5%	7%	20%	32%
<b>SCOTT WAGNER</b>						
<b>Sep 2018</b>	<b>7%</b>	<b>15%</b>	<b>11%</b>	<b>20%</b>	<b>6%</b>	<b>40%</b>
Aug 2018	10%	11%	9%	21%	7%	42%
Jun 2018	4%	13%	11%	19%	6%	47%
<b>LOU BARLETTA</b>						
<b>Sep 2018</b>	<b>12%</b>	<b>8%</b>	<b>7%</b>	<b>17%</b>	<b>6%</b>	<b>51%</b>
Aug 2018	11%	9%	7%	15%	5%	53%
Jun 2018	8%	6%	6%	11%	3%	66%
Mar 2018	7%	7%	4%	9%	4%	69%
Sep 2017	6%	9%	3%	6%	8%	68%

	Strongly favorable	Somewhat favorable	Somewhat unfavorable	Strongly unfavorable	Undecided	Don't know
<b>BOB CASEY, JR.</b>						
<b>Sep 2018</b>	<b>19%</b>	<b>21%</b>	<b>11%</b>	<b>17%</b>	<b>6%</b>	<b>26%</b>
Aug 2018	15%	27%	12%	17%	4%	25%
Jun 2018	18%	26%	10%	13%	5%	29%
Mar 2018	17%	26%	13%	12%	8%	25%
Sep 2017	17%	28%	10%	14%	11%	20%
Feb 2017	16%	25%	13%	12%	14%	21%
Oct 2013	12%	23%	10%	13%	16%	27%
Aug 2013	12%	22%	11%	13%	17%	26%
May 2013	17%	26%	9%	13%	17%	18%
Feb 2013	13%	27%	11%	13%	16%	21%
Oct 2012	16%	20%	12%	19%	14%	19%
Sep 2012	14%	23%	13%	16%	13%	22%
Aug 2012	11%	25%	12%	10%	16%	27%
Jun 2012	14%	24%	10%	8%	14%	29%
Jan 2012	9%	20%	9%	8%	18%	35%
Mar 2011	6%	19%	11%	8%	19%	37%
May 2010	10%	23%	9%	11%	16%	31%
Mar 2010	9%	24%	10%	11%	17%	29%
Feb 2010	13%	20%	9%	9%	15%	34%
Jan 2010	9%	23%	11%	9%	17%	31%
Oct 2009	11%	21%	9%	12%	15%	32%
Aug 2009	17%	24%	10%	8%	17%	24%
Jun 2009	11%	21%	12%	5%	17%	34%
Feb 2009	11%	19%	9%	8%	21%	32%
<b>DONALD TRUMP</b>						
<b>Sep 2018</b>	<b>26%</b>	<b>14%</b>	<b>4%</b>	<b>55%</b>	<b>0%</b>	<b>1%</b>
Aug 2018	26%	13%	5%	52%	3%	1%
Jun 2018	26%	14%	7%	51%	3%	0%
Mar 2018	21%	15%	11%	49%	2%	2%
Sep 2017	21%	22%	9%	36%	6%	6%
Feb 2017	23%	14%	6%	51%	6%	1%
Oct 2016	23%	12%	6%	56%	3%	1%
Sep 2016	20%	12%	6%	54%	6%	1%
Aug 2016	23%	14%	7%	51%	5%	1%
Jul 2016	20%	13%	5%	57%	5%	0%
Mar 2016	13%	14%	9%	56%	7%	1%
Feb 2016	12%	15%	11%	51%	10%	1%

**Vote\_Gov.** If the 2018 election for governor were being held today and the candidates included (*rotated*) [Scott Wagner, the Republican, Tom Wolf, the Democrat, Ken Krawchuk, the Libertarian, and Paul Glover, the Green Party], would you vote for [Scott Wagner, Tom Wolf, Ken Krawchuk, Paul Glover], some other candidate, or aren't you sure how you would vote?

	Sep 2018	Aug 2018	Jun 2018
Tom Wolf, the Democrat	<b>52%</b>	51%	48%
Scott Wagner, the Republican	<b>28%</b>	32%	29%
Ken Krawchuk, the Libertarian	<b>1%</b>	2%	--
Paul Glover, the Green Party	<b>0%</b>	2%	--
Some other candidate	<b>1%</b>	1%	1%
Do not know	<b>18%</b>	14%	23%

**Cert.** Are you absolutely certain you will vote for [fill Vote\_Gov] in the election, or are you still making up your mind?

<b>Wolf</b> <i>Respondents with vote choice</i>	Sep 2018 ( <i>n=282</i> )	Aug 2018 ( <i>n=256</i> )
Certain to vote for named candidate	<b>75%</b>	72%
Still making up mind	<b>24%</b>	29%
Do not know	<b>1%</b>	0%

<b>Wagner</b> <i>Respondents with vote choice</i>	Sep 2018 ( <i>n=153</i> )	Aug 2018 ( <i>n=161</i> )
Certain to vote for named candidate	<b>77%</b>	70%
Still making up mind	<b>21%</b>	27%
Do not know	<b>2%</b>	3%

**Lean\_Gov.** As of today, do you lean more to: (*rotated*) [Scott Wagner, the Republican, Tom Wolf, the Democrat, Ken Krawchuk, the Libertarian, and Paul Glover, the Green Party], or some other candidate?

<i>Respondents without vote choice</i>	Sep 2018 ( <i>n=104</i> )	Aug 2018 ( <i>n=77</i> )
Tom Wolf, the Democrat	26%	18%
Scott Wagner, the Republican	13%	16%
Paul Glover, the Green Party	1%	0%
Ken Krawchuk, the Libertarian	0%	0%
Some other candidate	5%	8%
Do not know	55%	58%

**ISSU\_GOV.** What issue will be most important to you when considering which candidate for governor you support?

	Sep 2018	Aug 2018
Taxes	<b>12%</b>	13%
Education, schools	<b>10%</b>	14%
Align with political views/platforms	<b>8%</b>	6%
Economy	<b>7%</b>	5%
Healthcare, insurance	<b>6%</b>	6%
Government, politicians	<b>5%</b>	6%
Immigration, illegal immigrants, refugees	<b>4%</b>	4%
Personal characteristic of candidate	<b>4%</b>	3%
Crime, drugs, violence, guns	<b>4%</b>	2%
Civil liberties	<b>3%</b>	3%
Elder issues, social security	<b>3%</b>	2%
Environment	<b>2%</b>	3%
Unemployment, personal finances	<b>2%</b>	3%
Values and morality	<b>2%</b>	3%
Donald Trump	<b>2%</b>	3%
Gasoline, utility prices	<b>1%</b>	1%
Justice system, lawyers	<b>1%</b>	1%
Social issues	<b>1%</b>	1%
Candidate who will put the state on right track	<b>1%</b>	1%
Welfare	<b>1%</b>	0%
Racism	<b>1%</b>	0%
Terrorism, war, foreign policy	<b>1%</b>	0%
Bipartisanship	<b>1%</b>	0%
Most qualified, most experienced	<b>1%</b>	0%
Retaining, attracting businesses	<b>1%</b>	0%
Transportation, infrastructure	<b>0%</b>	1%
Other	<b>4%</b>	3%
Do not know	<b>14%</b>	17%

**Sen2018** If the November 2018 general election for U.S. Senator was being held today and the candidates were (*rotated*) [Lou Barletta, the Republican and Bob Casey Jr., the Democrat, Dale Kerns, the Libertarian candidate, and Neal Gale, the Green Candidate], would you vote for: [Lou Barletta, Bob Casey, Jr., Dale Kerns, Neal Gale], some other candidate, or aren't you sure how you would vote?

	Sep 2018	Aug 2018	Jun 2018
Bob Casey, Jr., the Democrat	<b>48%</b>	48%	44%
Lou Barletta, the Republican	<b>30%</b>	29%	27%
Dale Kerns, the Libertarian	<b>2%</b>	1%	--
Neal Gale, the Green Party	<b>1%</b>	1%	--
Some other candidate	<b>1%</b>	1%	1%
Do not know	<b>20%</b>	20%	28%

**Cert.** Are you absolutely certain you will vote for [fill Sen2018] in the election, or are you still making up your mind?

<b>Casey</b> <i>Respondents with vote choice</i>	Sep 2018 ( <i>n=258</i> )	Aug 2018 ( <i>n=244</i> )
Certain to vote for named candidate	<b>77%</b>	76%
Still making up mind	<b>23%</b>	24%
Do not know	<b>1%</b>	0%

<b>Barletta</b> <i>Respondents with vote choice</i>	Sep 2018 ( <i>n=162</i> )	Aug 2018 ( <i>n=150</i> )
Certain to vote for named candidate	<b>77%</b>	74%
Still making up mind	<b>21%</b>	25%
Do not know	<b>2%</b>	1%

**Lean\_Gov.** As of today, do you lean more to: (*rotated*) [Lou Barletta, the Republican and Bob Casey Jr., the Democrat, Dale Kerns, the Libertarian candidate, and Neal Gale, the Green Candidate], or some other candidate?

<i>Respondents without vote choice</i>	Sep 2018 ( <i>n=112</i> )	Aug 2018 ( <i>n=108</i> )
Bob Casey, Jr., the Democrat	<b>28%</b>	23%
Lou Barletta, the Republican	<b>9%</b>	20%
Dale Kerns, the Libertarian	<b>0%</b>	3%
Neal Gale, the Green Party	<b>0%</b>	0%
Some other candidate	<b>2%</b>	4%
Do not know	<b>60%</b>	50%

**ISSU\_SEN.** What issue will be most important to you when considering which candidate for Senate you support?

	Sep 2018	Aug 2018
Align with political views/platforms	11%	9%
Donald Trump	10%	11%
Personal characteristic of candidate	8%	6%
Immigration, illegal immigrants, refugees	6%	6%
Healthcare, insurance	5%	6%
Taxes	4%	6%
Values and morality	4%	4%
Crime, drugs, violence, guns	4%	2%
Civil liberties	4%	1%
Government, politicians	3%	5%
Education, schools	3%	4%
Economy	3%	3%
Elder issues, social security	3%	2%
Justice system, lawyers	3%	1%
Unemployment, personal finances	2%	0%
Environment	1%	4%
Best option/dislike other candidate more	1%	2%
Candidate who will put country back on right track	1%	2%
Most qualified, most experienced	1%	0%
Bipartisanship	1%	1%
Terrorism, war, foreign policy	1%	1%
Social issues	1%	0%
Other	3%	3%
Do not know	20%	21%

**GenBalH** If the 2018 elections for the United States House of Representatives were being held today, would you vote for (*rotated*) [the Republican Party's candidate or the Democratic Party's] for the House in your district?

	Sep 2018	Aug 2018	Jun 2018
Democratic Party's candidate	51%	48%	50%
Republican Party's candidate	36%	39%	36%
Do not know	13%	13%	15%

**AGSTTRUMP.** Would you say your choice for the Democratic Party’s candidate is mainly a vote against President Trump and the Republicans in Congress, or not?

<i>Democratic Party voters</i>	<b>Sep 2018 (n=279)</b>	<b>Aug 2018 (n=245)</b>
Yes (vote against President Trump and the Republicans in Congress)	<b>74%</b>	67%
No	<b>25%</b>	31%
Do not know	<b>1%</b>	1%

**FORTRUMP.** Would you say your choice for the Republican Party’s candidate is mainly a vote to support President Trump and the Republicans in Congress, or not?

<i>Republican Party voters</i>	<b>Sep 2018 (n=194)</b>	<b>Aug 2018 (n=197)</b>
Yes (vote to support President Trump and the Republicans in Congress)	<b>80%</b>	74%
No	<b>17%</b>	26%
Do not know	<b>2%</b>	0%

**Rate\_Gov.** How would you rate the way that Tom Wolf is handling his job as Governor? Would you say he is doing an excellent job, a good job, only a fair job, or a poor job as Governor?

	<b>Excellent job</b>	<b>Good job</b>	<b>Only a fair job</b>	<b>Poor job</b>	<b>Don’t know</b>
<b>Sep 2018</b>	<b>12%</b>	<b>38%</b>	<b>27%</b>	<b>18%</b>	<b>6%</b>
Aug 2018	8%	38%	28%	20%	6%
Jun 2018	9%	36%	33%	16%	6%
Mar 2018	6%	37%	33%	16%	8%
Sep 2017	4%	34%	36%	19%	7%
May 2017	5%	36%	35%	17%	8%
Feb 2017	4%	34%	35%	19%	8%
Feb 2016	4%	27%	32%	29%	7%
Jan 2016	5%	28%	36%	26%	6%
Oct 2015	6%	30%	37%	21%	6%
Aug 2015	7%	32%	34%	17%	10%
Jun 2015	8%	31%	34%	16%	13%
Mar 2015	7%	31%	29%	14%	19%

**RateSenC.** How would you rate the way that Bob Casey is handling his job as US Senator? Would you say he is doing an excellent job, a good job, only a fair job, or a poor job as US Senator?

	<b>Excellent Job</b>	<b>Good Job</b>	<b>Only a Fair Job</b>	<b>Poor Job</b>	<b>Don't Know</b>
<b>Sep 2018</b>	<b>13%</b>	<b>29%</b>	<b>25%</b>	<b>20%</b>	<b>14%</b>
Aug 2018	9%	32%	27%	19%	13%
Jun 2018	10%	32%	29%	14%	15%
Mar 2018	7%	30%	32%	11%	20%
Sep 2017	8%	29%	27%	15%	22%
May 2017	10%	28%	33%	17%	13%
Feb 2017	10%	27%	31%	14%	18%
Oct 2013	5%	25%	34%	17%	20%
Aug 2013	5%	23%	39%	15%	19%
Oct 2012	6%	31%	33%	18%	12%
Sep 2012	7%	31%	32%	15%	16%
Aug 2012	4%	32%	37%	11%	16%
Jun 2012	5%	33%	32%	8%	21%
Feb 2012	4%	26%	43%	12%	15%
Jan 2012	4%	31%	36%	11%	19%
Oct 2011	5%	33%	38%	9%	16%
Aug 2011	5%	27%	43%	9%	16%
Mar 2011	3%	26%	39%	9%	23%
Feb 2009	7%	31%	32%	10%	20%
Aug 2007	5%	37%	36%	7%	15%



**RightDir** All in all, do you think things in Pennsylvania are generally headed in the right direction, or do you feel that things are off on the wrong track?

	Headed in Right Direction	Off on the Wrong Track	Don't know
<b>Sep 2018</b>	<b>51%</b>	<b>36%</b>	<b>14%</b>
Aug 2018	46%	36%	18%
Jun 2018	45%	39%	16%
Mar 2018	46%	40%	15%
Sep 2017	37%	48%	16%
May 2017	31%	50%	19%
Feb 2017	35%	52%	13%
Mar 2016	24%	66%	10%
Feb 2016	21%	67%	12%
Jan 2016	21%	67%	12%
Oct 2015	26%	62%	12%
Aug 2015	32%	54%	13%
Jun 2015	36%	47%	17%
Mar 2015	39%	47%	15%
Oct 2014	28%	61%	11%
Sep 2014	29%	60%	11%
Aug 2014	27%	61%	13%
Jun 2014	30%	59%	11%
Jan 2014	25%	62%	13%
Oct 2013	25%	61%	13%
Aug 2013	26%	62%	12%
May 2013	28%	58%	13%
Aug 2012	31%	56%	13%
Jun 2012	30%	57%	13%
Feb 2012	31%	56%	13%
Jan 2012	38%	47%	15%
Oct 2011	38%	49%	13%
Aug 2011	34%	53%	13%
Mar 2011	37%	53%	10%
Oct 2010	27%	64%	9%
Sep 2010	31%	59%	10%
Aug 2010	30%	58%	12%
May 2010	35%	55%	10%
Mar 2010	32%	58%	10%

**MIP\_PA.** What do you think is the most important problem facing Pennsylvania today?

	Sep 2018	Aug 2018	Jun 2018	Mar 2018	Sep 2017	May 2017	Feb 2017	Mar 2016	Feb 2016	Jan 2016	Oct 2015	Aug 2015	Jun 2015
Government, politicians	14%	16%	13%	16%	30%	22%	24%	45%	47%	38%	39%	22%	17%
Taxes	12%	10%	12%	15%	11%	12%	11%	7%	10%	9%	9%	12%	12%
Education, school	11%	13%	7%	9%	11%	17%	16%	13%	12%	18%	16%	21%	18%
Unemployment, personal finances	9%	14%	5%	12%	9%	8%	12%	13%	9%	8%	12%	15%	18%
Crime, drugs, violence, guns	6%	6%	8%	10%	6%	5%	5%	1%	2%	3%	2%	3%	2%
Economy, finances	6%	3%	9%	5%	7%	3%	3%	5%	4%	4%	4%	4%	7%
Roads, infrastructure, transportation	4%	5%	7%	3%	2%	4%	4%	2%	1%	2%	2%	3%	5%
Healthcare, insurance	4%	3%	5%	2%	4%	8%	4%	2%	1%	2%	2%	1%	1%
Environment	3%	3%	2%	2%	1%	3%	2%	1%	1%	1%	1%	1%	1%
Energy issues, gas prices	3%	2%	3%	0%	3%	1%	3%	2%	2%	2%	2%	5%	6%
Immigration	2%	2%	3%	1%	1%	1%	1%	0%	1%	0%	0%	0%	1%
Retaining, attracting businesses	2%	1%	0%	1%	0%	1%	2%	1%	1%	0%	1%	1%	1%
Bipartisanship	2%	0%	2%	1%	2%	0%	0%	0%	0%	0%	0%	0%	0%
Align with political views/platforms	2%	0%	0%	0%	0%	0%	0%	0%	0%	0%	0%	0%	0%
Senior issues, social security	1%	1%	1%	0%	0%	1%	0%	0%	0%	1%	1%	1%	6%
Welfare	1%	0%	1%	1%	1%	0%	1%	1%	0%	0%	1%	1%	0%
Housing and real estate	1%	0%	0%	0%	0%	0%	0%	0%	0%	0%	0%	0%	0%
Transportation, availability	1%	0%	0%	0%	0%	0%	0%	0%	0%	0%	0%	0%	0%
Racism	0%	0%	1%	1%	1%	0%	1%	0%	0%	0%	0%	0%	0%
Justice system, Lawyers	0%	0%	1%	1%	0%	0%	1%	0%	0%	0%	0%	0%	0%
Values, morals	0%	0%	1%	0%	1%	0%	1%	1%	1%	1%	0%	2%	1%
Daycare	0%	0%	1%	0%	0%	0%	0%	0%	0%	0%	0%	0%	0%
Population loss, movement out of state	0%	0%	0%	1%	0%	0%	0%	0%	0%	0%	0%	0%	0%
Civil liberties	0%	0%	0%	0%	1%	0%	1%	0%	0%	0%	0%	0%	0%
Population, urban sprawl	0%	0%	0%	0%	1%	0%	0%	0%	0%	0%	0%	0%	0%
Social issues	0%	2%	1%	6%	1%	2%	2%	1%	0%	1%	1%	1%	1%
Other	4%	7%	3%	5%	2%	5%	4%	3%	4%	4%	3%	2%	3%
Don't know	14%	12%	14%	13%	5%	7%	6%	3%	5%	8%	6%	6%	0%

**RatePres.** How would you rate the way that Donald Trump is handling his job as president? Would you say he is doing an excellent job, a good job, only a fair job, or a poor job as President?

	Excellent Job	Good Job	Only a Fair Job	Poor Job	Don't Know
<b>Sep 2018</b>	<b>18%</b>	<b>19%</b>	<b>8%</b>	<b>55%</b>	<b>0%</b>
Aug 2018	18%	20%	10%	52%	1%
Jun 2018	17%	18%	13%	52%	0%
Mar 2018	13%	17%	16%	54%	1%
Sep 2017	13%	16%	18%	53%	1%
May 2017	13%	24%	14%	49%	2%
Feb 2017	13%	19%	13%	54%	1%

**RightDirUS.** All in all, do you think things in the United States are generally headed in the right direction, or do you feel that things are off on the wrong track?

	Sep 2018	Feb 2017	Oct 2016	Sep 2016	Aug 2016	Jul 2016
Right direction	<b>36%</b>	29%	35%	36%	32%	38%
Wrong track	<b>60%</b>	66%	58%	57%	61%	57%
Don't know	<b>4%</b>	6%	7%	7%	7%	5%

**MIP\_US.** What do you think is the most important problem facing the United States today?

	Sep 2018	Feb 2017
Donald Trump	<b>16%</b>	0%
Immigration	<b>15%</b>	10%
Government, politicians	<b>14%</b>	41%
Global events	<b>8%</b>	4%
Bipartisanship	<b>7%</b>	0%
Social issues	<b>5%</b>	1%
Foreign policy, terrorism, war	<b>4%</b>	7%
Crime, drugs, violence, guns	<b>4%</b>	1%
Economy, finances	<b>3%</b>	5%
Racism	<b>3%</b>	3%
Healthcare, insurance	<b>2%</b>	4%
Environment	<b>2%</b>	2%
Values and morality	<b>2%</b>	0%
Unemployment, personal finances	<b>1%</b>	6%
Education, school	<b>1%</b>	2%
Civil liberties	<b>1%</b>	2%
Lack of pride in U.S.	<b>1%</b>	0%
Welfare	<b>1%</b>	1%
Align with political views/platforms	<b>1%</b>	0%
Candidate who will put country back on right track	<b>1%</b>	0%
Taxes	<b>0%</b>	1%
Other	<b>6%</b>	8%
Don't know	<b>5%</b>	3%

**TAX1.** Congress passed the Tax Cut and Job Act in December. Have you seen an increase in your household income because of this legislation?

	Sep 2018	Aug 2018	Jun 2018
Yes	<b>30%</b>	30%	33%
No	<b>64%</b>	65%	59%
Do not know	<b>7%</b>	6%	8%

**TAX2.** Would you say it is a small, moderate, or large increase?

	Sep 2018 n=159	Aug 2018 n=152	Jun 2018 n=153
Small increase	<b>58%</b>	55%	63%
Moderate increase	<b>35%</b>	31%	35%
Large increase	<b>6%</b>	13%	2%
Do not know	<b>1%</b>	2%	0%

**HC2.** As far as you know, has the Trump administration made any significant changes to the Affordable Care Act?

	Sep 2018	Aug 2018	Jun 2018
Yes	<b>37%</b>	45%	41%
No	<b>45%</b>	35%	37%
Do not know	<b>18%</b>	21%	23%

**HC3.** Do you think the changes to the regulations for the Affordable Care Act will make the healthcare system better or worse for your family?

	Sep 2018 n=199	Aug 2018 n=227	Jun 2018 n=191
Much better	<b>17%</b>	13%	8%
Somewhat better	<b>17%</b>	17%	18%
Somewhat worse	<b>23%</b>	20%	20%
Much worse	<b>30%</b>	34%	32%
Do not know	<b>14%</b>	16%	22%

I am going to read a list of problems and issues. For each one, please tell me how well President Trump's administration has performed, using an A for excellent, B for very good, C for average, D for below average or F for failing.

		<b>A</b> <b>Excellent</b>	<b>B</b> <b>Very Good</b>	<b>C</b> <b>Average</b>	<b>D</b> <b>Below Average</b>	<b>F</b> <b>Failing</b>	<b>Don't know</b>
Dealing with terrorism	<b>Sep 2018</b>	<b>23%</b>	<b>19%</b>	<b>18%</b>	<b>13%</b>	<b>23%</b>	<b>4%</b>
	Aug 2018	24%	18%	20%	15%	19%	4%
	Sep 2017	22%	17%	21%	15%	24%	2%
	May 2017	26%	21%	13%	14%	24%	3%
Helping to create new jobs	<b>Sep 2018</b>	<b>30%</b>	<b>17%</b>	<b>20%</b>	<b>16%</b>	<b>15%</b>	<b>3%</b>
	Aug 2018	30%	15%	18%	15%	19%	4%
	Sep 2017	17%	21%	17%	17%	25%	4%
	May 2017	21%	21%	16%	19%	21%	2%
Handling immigration	<b>Sep 2018</b>	<b>18%</b>	<b>17%</b>	<b>7%</b>	<b>7%</b>	<b>49%</b>	<b>1%</b>
	Aug 2018	20%	14%	11%	9%	46%	1%
	Sep 2017	14%	18%	11%	12%	46%	0%
	May 2017	20%	16%	11%	11%	41%	1%
Handling foreign policy	<b>Sep 2018</b>	<b>20%</b>	<b>15%</b>	<b>10%</b>	<b>10%</b>	<b>44%</b>	<b>2%</b>
	Aug 2018	22%	13%	10%	11%	44%	0%
	Sep 2017	12%	17%	14%	18%	38%	1%
	May 2017	17%	19%	14%	13%	36%	1%
Making government operate more efficiently	<b>Sep 2018</b>	<b>11%</b>	<b>19%</b>	<b>15%</b>	<b>12%</b>	<b>40%</b>	<b>4%</b>
	Aug 2018	16%	14%	14%	12%	40%	4%
	Sep 2017	12%	14%	17%	16%	37%	4%
	May 2017	12%	20%	16%	14%	34%	4%
Improving the healthcare system	<b>Sep 2018</b>	<b>5%</b>	<b>13%</b>	<b>22%</b>	<b>14%</b>	<b>42%</b>	<b>4%</b>
	Aug 2018	8%	13%	19%	13%	41%	7%
	Sep 2017	7%	12%	15%	15%	50%	1%
	May 2017	10%	16%	15%	11%	45%	4%
Dealing with climate change	<b>Sep 2018</b>	<b>8%</b>	<b>10%</b>	<b>15%</b>	<b>8%</b>	<b>51%</b>	<b>7%</b>
	Aug 2018	9%	8%	15%	9%	51%	7%
	Sep 2017	9%	11%	13%	13%	47%	6%
	May 2017	8%	10%	16%	7%	52%	7%
Improving the condition of the country's roads, bridges, and transit systems	<b>Sep 2018</b>	<b>5%</b>	<b>17%</b>	<b>24%</b>	<b>13%</b>	<b>27%</b>	<b>14%</b>
	Aug 2018	7%	14%	25%	13%	30%	11%
	Sep 2017	7%	13%	27%	12%	26%	14%
	May 2017	7%	14%	22%	14%	27%	16%

		<b>A</b>	<b>B</b>	<b>C</b>	<b>D</b>	<b>F</b>	
		<b>Excellent</b>	<b>Very Good</b>	<b>Average</b>	<b>Below Average</b>	<b>Failing</b>	<b>Don't know</b>
Improving public education	<b>Sep 2018</b>	<b>4%</b>	<b>15%</b>	<b>21%</b>	<b>13%</b>	<b>39%</b>	<b>9%</b>
	Aug 2018	6%	11%	20%	14%	38%	11%
	Sep 2017	4%	14%	20%	15%	40%	8%
	May 2017	6%	13%	20%	11%	41%	9%
Protecting the environment	<b>Sep 2018</b>	<b>7%</b>	<b>15%</b>	<b>16%</b>	<b>9%</b>	<b>48%</b>	<b>5%</b>
	Aug 2018	7%	12%	16%	11%	48%	6%
	Sep 2017	7%	12%	19%	12%	47%	4%
	May 2017	6%	12%	17%	9%	51%	5%

**PrimNews** What is your primary source for news?

	<b>Sep 2018</b>	<b>Aug 2018</b>	<b>May 2017</b>	<b>Feb 2017</b>	<b>Oct 2016</b>	<b>Sep 2016</b>	<b>Aug 2016</b>	<b>Jul 2016</b>
Cable television, such as Fox, CNN, or MSNBC	<b>30%</b>	28%	28%	31%	29%	30%	28%	27%
Internet (other than social media)*	<b>27%</b>	25%	28%	28%	33%	32%	28%	35%
Network television, such as ABC, CBS, or NBC	<b>20%</b>	20%	15%	18%	19%	20%	21%	20%
Daily newspaper (such as the Inquirer or Post-Gazette )	<b>8%</b>	7%	12%	8%	7%	8%	11%	10%
Radio	<b>6%</b>	9%	8%	8%	7%	7%	6%	6%
Social media (Twitter, Facebook, SnapChat, Instagram)	<b>5%</b>	5%	4%	3%	--	--	--	--
Neighborhood newspaper	<b>1%</b>	2%	3%	1%	2%	2%	2%	2%
Other	<b>4%</b>	9%	2%	3%	4%	2%	3%	1%
Do not know	<b>0%</b>	0%	1%	1%	0%	1%	1%	0%

*\*updated to exclude social media in February 2017*

**CabNet** Which cable network do you rely on the most?

<b>(cable television respondents)</b>	<b>Sep 2018 n=159</b>	<b>Aug-18 n=141</b>	<b>May-17 n=180</b>	<b>Feb-17 n=252</b>
Fox News Channel	<b>53%</b>	43%	50%	44%
CNN	<b>22%</b>	22%	22%	29%
MSNBC	<b>16%</b>	20%	18%	15%
HLN	<b>2%</b>	0%	1%	0%
NBC	<b>1%</b>	0%	3%	--
CBS	<b>1%</b>	0%	0%	0%
PBS	<b>0%</b>	3%	0%	0%
Fox Business Network	<b>0%</b>	0%	0%	1%
One America News Network	<b>0%</b>	0%	1%	0%
None, nothing	<b>0%</b>	1%	0%	1%
Other	<b>5%</b>	7%	5%	10%
Do not know	<b>0%</b>	3%	2%	2%

**FinToday.** We are interested in how people are getting along financially these days. Would you say that you and your family are better off, worse off, or about the same financially as you were a year ago?

	Sep 2018	Sep 2017	Feb 2017	Oct 2016	Sep 2016	Aug 2016	Jul 2016
Better off	<b>31%</b>	16%	21%	22%	23%	24%	24%
Worse off	<b>13%</b>	13%	19%	24%	21%	24%	22%
About the same	<b>56%</b>	69%	60%	53%	56%	52%	54%
Don't know	<b>1%</b>	2%	1%	1%	1%	1%	1%

**FinFut.** Now looking ahead, do you think that a year from now, you and your family will be better off financially than you are now, worse off, or about the same as you are now?

	Sep 2018	Feb 2017	Oct 2016	Sep 2016	Aug 2016	Jul 2016
Better off	<b>31%</b>	28%	25%	25%	25%	24%
Worse off	<b>10%</b>	15%	7%	7%	8%	7%
About the same	<b>55%</b>	49%	49%	52%	53%	55%
Don't know	<b>5%</b>	8%	19%	16%	14%	14%

**DEMO** I now have a final few questions for statistical purposes only.

**CNTY.** Region of state (What is the name of the county you live in?)

37% Central  
 16% Southeast  
 11% Philadelphia  
 10% Northeast  
 9% Allegheny  
 9% Northwest  
 7% Southwest

**AGE.** What was your age on your last birthday?

8% 18-24  
 18% 25-34  
 13% 35-44  
 19% 45-54  
 15% 55-64  
 29% 65 and older

**EDUC.** What was the highest level of schooling you have completed?

- 2% Non high school graduate
- 20% High school graduate or GED
- 18% Some college
- 9% Associate's degree or technical degree
- 30% Bachelor's degree
- 23% Post graduate degree

**MAR.** What is your CURRENT marital status...are you single, married, separated, divorced, or a widower?

- 56% Married
- 28% Single, Never Married
- 9% Divorced
- 7% Widow or widower
- 1% Separated

**IDEO.** Politically speaking, do you consider yourself to be a liberal, a moderate, or a conservative?

	Liberal	Moderate	Conservative	Don't know
<b>Sep 2018</b>	<b>28%</b>	<b>36%</b>	<b>31%</b>	<b>5%</b>
Aug 2018	25%	33%	37%	5%
Jun 2018	27%	40%	33%	0%
Mar 2018	27%	40%	33%	0%
May 2017	26%	41%	30%	2%
Feb 2017	27%	42%	31%	0%
Oct 2016	33%	29%	34%	4%
Sep 2016	31%	28%	38%	4%
Aug 2016	31%	32%	33%	4%
Jul 2016	33%	30%	33%	4%
Mar 2016	24%	35%	37%	3%
Feb 2016	27%	33%	37%	3%
Jan 2016	22%	39%	36%	4%
Oct 2015	22%	38%	37%	4%
Aug 2015	21%	36%	40%	3%
Jun 2015	23%	35%	39%	4%
Oct 2014	23%	37%	36%	3%
Sep 2014	22%	36%	38%	5%
Aug 2014	20%	39%	36%	5%
Jun 2014	26%	36%	34%	5%
Jan 2014	24%	43%	28%	5%
Oct 2013	24%	39%	31%	6%
Aug 2013	22%	42%	33%	3%
May 2013	24%	39%	31%	6%
Feb 2013	26%	36%	35%	3%



Oct 2012	22%	39%	35%	5%
Sep 2012	26%	34%	35%	5%
Aug 2012	21%	40%	36%	4%
Jun 2012	25%	34%	36%	5%
Feb 2012	17%	39%	40%	4%
Jan 2011	21%	39%	36%	4%
Oct 2011	20%	39%	33%	8%
Aug 2011	24%	32%	37%	7%
Mar 2011	16%	33%	41%	10%
Oct 2010	16%	37%	39%	8%
Sep 2010	15%	34%	40%	10%
Aug 2010	19%	32%	40%	9%
May 2010	19%	32%	40%	9%
Mar 2010	17%	35%	40%	8%
Feb 2010	21%	33%	37%	9%
Jan 2010	19%	30%	42%	9%

**PARTY.** Regardless of how you are registered... in politics, as of today, do you think of yourself as a Republican, a Democrat, or an Independent?

21% Strong Republican  
9% Republican  
10% Lean Republican  
6% Independent  
14% Lean Democrat  
10% Democrat  
28% Strong Democrat  
3% Don't know

**GUN.** Are you a gun owner?

33% Yes  
68% No

**GUN2.** Generally speaking, do you favor or oppose creating more laws that regulate gun ownership?

	<b>Strongly favor</b>	<b>Somewhat favor</b>	<b>Somewhat oppose</b>	<b>Strongly oppose</b>	<b>Don't know</b>
<b>Sep 2018</b>	<b>45%</b>	<b>20%</b>	<b>8%</b>	<b>23%</b>	<b>3%</b>
Aug 2018	47%	17%	12%	22%	2%
Jun 2018	54%	15%	9%	20%	2%
Mar 2018	52%	20%	7%	19%	3%
Sep 2017	38%	23%	11%	24%	4%
Feb 2017	42%	19%	14%	23%	2%
Oct 2016	38%	27%	12%	21%	4%
Sep 2016	44%	21%	10%	23%	3%
Aug 2016	38%	16%	16%	26%	3%
Jul 2016	43%	18%	10%	25%	4%
Mar 2016	42%	17%	10%	28%	3%
Feb 2016	40%	16%	13%	29%	3%
Jan 2016	40%	15%	13%	29%	3%
Oct 2015	43%	13%	10%	31%	4%
Aug 2015	40%	14%	10%	32%	5%
Jun 2015	38%	13%	12%	33%	5%
Oct 2014	42%	12%	8%	37%	2%
Sep 2014	39%	14%	10%	32%	5%
Aug 2014	39%	14%	10%	31%	6%
Jun 2014	43%	12%	9%	31%	5%
Jan 2014	42%	12%	9%	32%	6%
Oct 2013	46%	16%	9%	24%	5%
Aug 2013	39%	12%	13%	33%	4%
May 2013	43%	14%	11%	30%	3%
Aug 2007	40%	20%	14%	23%	3%
Jun 2007	39%	15%	12%	31%	3%
Feb 2007	39%	17%	15%	26%	3%

**LABR.** Are you or is any member of your household a member of a LABOR UNION?

17% Yes  
82% No  
1% Do not know

**VET.** Are you a military veteran?

11% Yes  
89% No

**Hisp.** Are you Hispanic or Latino, or not?

5% Yes  
95% No

**RACE.** Which of the following categories best describes your racial background?

90% White  
10% Non-white

**REL.** Do you consider yourself to be Protestant, Catholic, some other religion, or not affiliated with any religion?

31% Protestant  
23% Catholic  
13% Some other religion  
34% Not affiliated with any religion

**BAC.** Do you consider yourself to be a born-again Christian or fundamentalist, or not?

23% Yes  
75% No  
2% Don't know

**ABORT.** Do you think that abortion should be legal under any circumstances, legal under certain circumstances, or illegal in all circumstances?

	Legal under any circumstances	Legal under certain circumstances	Illegal in all circumstances	Don't know
<b>Sep 2018</b>	<b>34%</b>	<b>51%</b>	<b>12%</b>	<b>2%</b>
Aug 2018	30%	54%	15%	1%
Jun 2014	23%	56%	19%	2%
Sep 2010	20%	56%	22%	2%
Aug 2010	18%	61%	19%	3%
May 2010	21%	58%	19%	2%
Mar 2010	19%	56%	23%	2%
Feb 2010	19%	57%	22%	2%
Jan 2010	23%	50%	24%	3%
Oct 2009	20%	54%	23%	3%
Aug 2009	21%	54%	23%	2%
Jun 2009	18%	58%	22%	2%
Aug 2007	22%	56%	21%	1%
Jun 2007	21%	58%	20%	1%
Feb 2007	20%	53%	26%	1%

**NUMC.** How many children under 18 years of age currently live in your household?

73%	None
13%	One
11%	2-3
2%	4-5
1%	6 or more

**WORK.** Are you currently working fulltime, part-time, going to school, keeping house or something else?

49%	Full-time
27%	Retired
13%	Part-time
3%	Disabled
3%	Something else
3%	Going to school
2%	Unemployed

**INCOME.** And, just for statistical purposes, we need to know if your total family income is above or below \$50,000 per year?

10%	Under \$25,000
10%	\$25-\$35,000
10%	\$35-50,000
19%	\$50-75,000
17%	\$75-100,000
31%	Over \$100,000
5%	Don't know

**DONE.** Sex of respondent:

48%	Male
52%	Female