



Select your city

Search articles from thousands of Examiners

Search

Get the latest developments on health and well-being all in one place. [discover more >](#)

GetInsideHealth
Philips' exclusive guide to Health and Well-being

www.getinsidehealth.com

[Feedback - Ads by Google](#)

Home Entertainment Business Family & Home Life News & Politics Sports & Recreation

Philadelphia Arts and Entertainment DC Museum Examiner



SALVAGE: Reclaiming Recycling, A National Juried Exhibition

October 9, 1:36 PM · DC Museum Examiner · Liz Geltman

2 comments | Print | Email | RSS | Subscribe | Previous | Next

Anybody looking for tangible proof of the value of a liberal arts education should go see [SALVAGE: Reclaiming Recycling, A National Juried Exhibition](#) at the [Phillips Museum of Art at Franklin and Marshall College](#) before it closes on October 18, 2009.

Many exhibits highlight the found art movement, but this exhibit is one of the best at any museum. The fact that the [SALVAGE](#) exhibit was conceived, planned and put together by two members of the F&M Class of 2009 while they were still art history students at the college makes it even more remarkable.

Nicole DeAugustine and Christine Batta worked with museum curator Claire Giblin to create an "exhibition of works using only recycled, salvaged, found, re-used materials in an effort to convey the contribution artists and art venues make in a green conscious society." [Linda Cunningham](#) served as juror for the national exhibition. The result is a truly innovative exhibit with 63 artists contributing 95 intriguing works of art.

As you walk through the two story exhibit, the difference between the chosen works is striking. It is no wonder that the *Seated Lady and Boxer* sculptures by Leo Sewell were chosen as "Best in Show." The two sculptures are well crafted, but the fact that the sculptures are made entirely of reclaimed items adds a dimension that clearly causes visitors to stop, examine the parts and then linger to admire the cleverness in equal measure with the artistic design.

Some items in the exhibit clearly count on the "yuk" reaction of the audience. Michelle Frick's *Medical Trash* may not be an item most folks would want to hang in their home. The sculpture's temporal nature would preclude such an installation. There is, however, no mistaking the Frick's profound commentary on health care policy through her thought provoking work.

Other items go back to a simpler time when it was customary for people to use everything available and produce less trash. Chen Yi-Chuan's three hats called Souvenir I, II and III are each woven entirely from the artist's own hair. Use of human hair in jewelry and other items was common in the United States during the revolutionary period.

The Phillips Museum is located in Steinman College Center, on College Avenue, at Franklin & Marshall College in Lancaster, Pennsylvania. The museum is open Tuesday through Friday from 11:30 a.m. to 4:30 p.m., on weekends from 12:30 p.m. to 4:30 p.m. and on Lancaster "[First Fridays](#)" from 4:30-6:30 p.m. when the college is in session.



Best of Show *Seated Lady, Boxer* by Leo Sewell at [SALVAGE](#)

Get the latest developments on health and well-being all in one place.

[discover more >](#)

GetInsideHealth
Philips' exclusive guide to Health and Well-being

www.getinsidehealth.com

[Ads by Google](#)

Recent Articles

[70th anniversary screening of Mr. Smith Goes to Washington at the National Archives](#)

Thursday, October 15, 2009

Mark your appointment book. This evening the National Archives will host the 70th Anniversary Screening of Mr. Smith Goes to Washington in the ...

[Kids of all ages will love the Art of Power at the National Gallery of Art](#)

Wednesday, October 14, 2009

If you are looking for an exhibition that appeals to all ages then visit the Art of Power : Royal Armor and Portraits from Imperial Spain on view at ...

[All Articles >](#)

Things to see and do

Today [FRI 16](#) [SAT 17](#) [SUN 18](#) [MON 19](#) [TUE 20](#)



[DJ Tiesto](#)

15 Oct 2009 - 12 am
Electric Factory

[More music >](#)



[Insane Clown Posse](#)

Electric Factory



[BeauSoleil](#)

Arden Gild Hall

[See all Events >](#)

Museums & Exhibits Reviewed in July 2009

Allow a little over two hours to drive from Washington, DC to [Phillips Museum](#) of Art at [Franklin and Marshall College](#). The museum is closed during all [Franklin and Marshall College](#) breaks.

For other articles on recent found art exhibitions in Washington, DC see, [Jean Shin's found art at the Smithsonian American Art Museum](#) and [Red Bull art of the can exhibition at Union Station](#).

For another article on the use of art to advocate changes in health care see, [Art as advocacy](#).

[SALVAGE: Reclaiming Recycling. A National Juried Exhibition](#)



National Juried Exhibition conceived and co-chaired by Nicole DeAugustine and Christine Batta 2009 graduates of Franklin & Marshall College at the Phillips Museum of Art

[View Slideshow »](#)

More About: [Weekend Adventure](#)

[ShareThis](#)

[Report article](#)

Related Articles:

[Penelope Cruz, Liza Minnelli join "Sex and the City 2" cast](#)

[Brandywine Singers begin 2009-10 season with spirituals concert](#)

[Breaking news: Transcript of private call between James Ray and sweat lodge victims](#)

[Something wicked this way comes --- Rodentia: The Best of Dark Roots Music](#)

[New comic book picks 10/14/09](#)

Comments

BC17603 says:

When visiting, check out Downtown Lancaster's only architectural salvage shop, BUiLDiNG CHARACTER, rear warehouses @ 342 N. Queen Street. [www.BUILDINGCHARACTER.biz](#)

- [Baltimore Museum of Art](#)
- [Camp David Museum in Thurmont, Maryland](#)
- [Catoctin Mountain National Park Visitor Center](#)
- [Cunningham Falls State Park Trail Guide](#)
- [Fritz Scholder Indian/Not Indian at the NMAI](#)
- [John Dillinger Exhibit at the National Museum of Crime & Punishment](#)
- [Jean Shin: Common Threads at the Smithsonian American Art Museum](#)
- [Leo Villareal's Multiverse at the National Gallery of Art](#)
- [National Gallery of Art](#)
- [National Museum of the American Indian](#)
- [National Museum of Crime & Punishment](#)
- [Night at the Museum Pile of Loot at the Smithsonian Castle](#)
- [Sondheim Artscape Prize: 2009 Finalists at the Baltimore Museum of Art](#)
- [Smithsonian American Art Museum](#)
- [Smithsonian Institution Museums](#)

[Glass Recycling](#)

Learn about Coke's commitment to the environment & how you can help!

[LivePositively.com/JoinUs](#)

[National College](#)

Attend National College of Business & Technology in KY, VA, OH, IN, TN.

[National.BusinessAndTechCollege.com](#)

[Recycling & Demolition](#)

The 1 Stop for All Your Demolition, Disposal & Trucking Needs!

[www.SterlingRecycling.com](#)

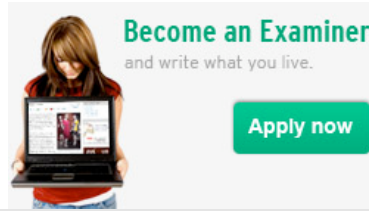


October 12, 9:01 PM

Erwin says:

Thanks for the article. Great show, well worth a visit. Fabulous to see all the innovative uses of used materials and creative interpretations. The globe made from computer keys is my favorite!

October 12, 4:17 PM



Name:

Comments:

100 characters left

SEND

Examiner Articles by Category

- | | | |
|---|---|---------------------------------------|
| Arts & Entertainment | Health | Society & Culture |
| Bars & Clubs | Home & Living | Sports |
| Business & Finance | Neighborhoods | Style & Fashion |
| Careers & Workplace | News | Transportation |
| Education & Schools | Pets | Travel |
| Family & Parenting | Politics | View the latest » |
| Fitness & Weight Loss | Recreation | |
| Food & Drink | Relationships | |
| Gadgets & Tech | Religion & Spirituality | |
| Games & Hobbies | Restaurants | |

More from Examiner.com

- [Associated Press](#)
- [Classifieds](#)
- [Events](#)
- [Examiners](#)
- [News By Location](#)
- [News By Topic](#)
- [Press Releases](#)
- [Slideshows](#)
- [Stock Quotes](#)
- [Today In Photos](#)

Examiner.com Links

- [Join our Affiliate Program](#)
- [Blog](#)
- [Examiner in the Press](#)
- [Careers](#) | [Advertise](#)
- [RSS Feeds](#)
- [Terms of Use](#) | [Privacy Policy](#)
- [Contact Us](#)
- [Walden Media](#)
- [AEG Worldwide](#) | [AEG Live](#)
- [Foundation for a Better Life](#)