

FRANKLIN & MARSHALL

August 2020

Franklin & Marshall

College Poll

SUMMARY OF FINDINGS

Prepared by:

Center for Opinion Research

Floyd Institute for Public Policy

Franklin & Marshall College

Table of Contents

TABLE OF CONTENTS.....	2
KEY FINDINGS.....	3
<i>VOTER SENTIMENT AND STATE ISSUES.....</i>	<i>4</i>
<i>PRESIDENT TRUMP: JOB PERFORMANCE.....</i>	<i>6</i>
<i>VOTER INTEREST AND INTENTIONS</i>	<i>7</i>
METHODOLOGY.....	10
ATTACHMENT A-1.....	12
ATTACHMENT A-2.....	13
ATTACHMENT A-3.....	14
ATTACHMENT A-4.....	15
ATTACHMENT A-5.....	16
ATTACHMENT A-6.....	17
MARGINAL FREQUENCY REPORT.....	18

Key Findings

The August 2020 Franklin & Marshall College Poll finds that half (46%) of the state’s registered voters believe the state is “headed in the right direction,” which is below the recent high of 57% reported in October, 2019. This general optimism holds despite significant concern about COVID-19. Registered voters list COVID-19 (31%) as the most important problem facing the state today, but concerns about the economy and personal finances have sharply increased in the past month, rising from 12% to 22%. Most registered voters believe that Pennsylvania has managed the coronavirus outbreak better (52%) or the same (27%) as other states.

Registered voters are less optimistic about their finances than they were prior to the coronavirus outbreak. Fewer voters report they are financially “better off” (23%) today compared to January (33%) and fewer expect to be “better off” (24%) financially next year than felt that way in January (31%). One in four (27%) registered voters believes that the United States is “headed in the right direction,” which is down from two in five (38%) in January.

Nearly three-quarters (72%) of the state’s registered voters say they are “very interested” in the 2020 elections, about the same level of interest as last month (74%) and similar to the interest expressed by registered voters in August 2016. More voters expect to cast their ballot in person (62%) than by mail (31%) in 2020, but there are partisan differences in these expectations.

Democrat Joe Biden currently leads President Trump among the state’s registered voters, 49% to 42%. There are fewer registered voters in 2020 who express support for a third-party candidate or who are undecided compared to August 2016. President Trump continues to have an advantage, according to registered voters, when it comes to economic matters, but Mr. Biden holds an advantage over the President on all other characteristics tested, most notably on issues in dealing with the coronavirus and on personal attributes such as character and honesty.

Voter Sentiment and State Issues

Half (46%) of the state’s registered voters believe the state is “headed in the right direction,” which is below the recent high of 57% reported in October, 2019. As Figure 1 shows, more registered voters in the state had been expressing positive views about the direction of the state during the last year than had done so in the prior decade.¹ This general optimism holds despite significant concern about COVID-19. Registered voters list COVID-19 (31%) as the most important problem facing the state today, but concerns about the economy and personal finances have sharply increased in the past month, rising from 12% to 22%. The only other issue listed as a problem by more than one in ten registered voters is concern about government and politicians (18%). Most registered voters believe that Pennsylvania has managed the coronavirus outbreak better (52%) or the same (27%) as other states, although Democrats (73%) and independents (59%) are more likely to say the state has done better than are Republicans (26%).

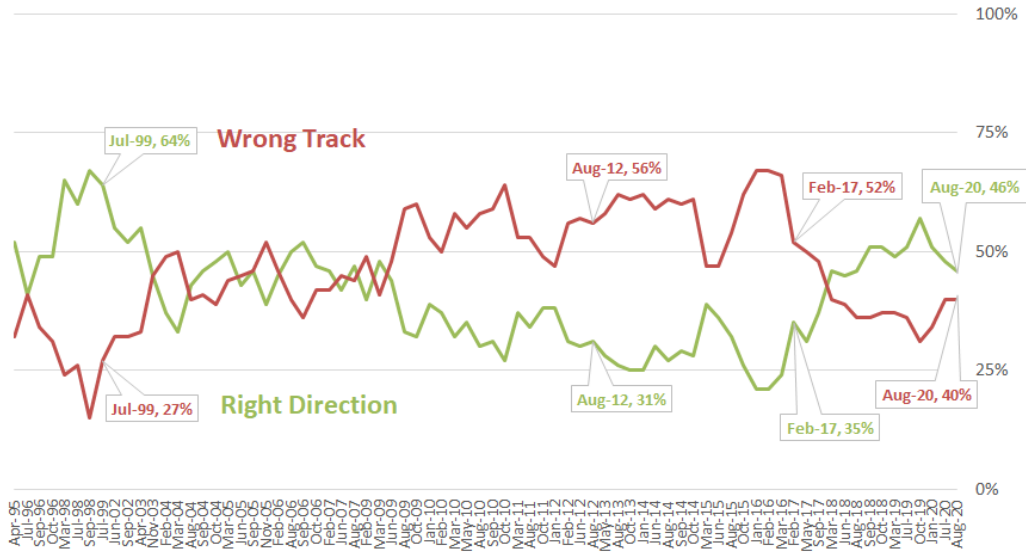
Registered voters are less optimistic about their finances than they were prior to the coronavirus outbreak. Fewer voters report they are financially “better off” (23%) today compared to January (33%) and fewer expect to be “better off” (24%) financially next year than felt that way in January (31%). It is notable that only one in four (27%) registered voters believes that the United States is “headed in the right direction,” which is down from two in five (38%) in January. More Republicans (49%) than independents (24%) or Democrats (9%) feel the country is on the right track.

¹ More Democrats (61%) than independents (50%) or Republicans (28%) believe the state is “headed in the right direction.”

Figure 1:

Direction of State Over Time, Pennsylvania residents 1995-2020

All in all, do you think things in Pennsylvania are generally headed in the right direction, or do you feel that things are off on the wrong track?



Note: Beginning in 2012, question asked only of registered voter, prior surveys included all adults.



Governor Wolf remains more popular than unpopular among the state’s registered voters. More than half have a favorable opinion of the Governor (54%) and a similar proportion rate his performance in office as “excellent” or “good” (49%). Democrats (73%) and independents (51%) provide more favorable job ratings for the Governor than do Republicans (21%), but the differences among ideological groups are even more pronounced. Nine in ten (86%) liberals, three in five (61%) moderates, but only one in six (17%) conservatives provides the Governor with positive job ratings.

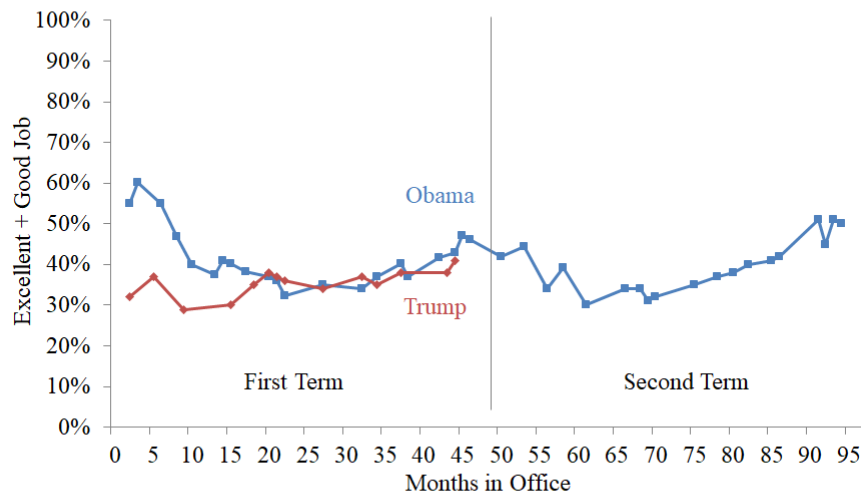
President Trump: Job Performance

About two in five (41%) registered voters in Pennsylvania believe President Trump is doing an “excellent” or “good” job as president, which is consistent with his rating in the July 2020 Franklin & Marshall College Poll. Figure 2 compares President Trump’s job ratings to President Obama’s job ratings; President Trump’s current rating is slightly lower than President Obama’s rating in Pennsylvania at the same point in his Presidency. A majority of Republicans (78%) rate the President’s performance positively, while fewer Democrats (9%) or independents (33%) do so. Conservatives (84%) are more likely than moderates (21%) or liberals (3%) to give the President positive job approval ratings.

Figure 2:

Comparison of Presidents’ Job Performance Ratings, Pennsylvania voters August 2020

How would you rate the way that [fill President] is handling his job as President? Would you say he is doing... an excellent job, a good job, only a fair job, or a poor job as President?



Source: Survey conducted August 17 – August 23, 2020

Voter Interest and Intentions

Nearly three-quarters (72%) of the state’s registered voters say they are “very interested” in the 2020 elections, about the same level of interest as last month (74%). This level of interest is similar to the interest expressed by registered voters in August, 2016.² Voter interest is related to both political party and political ideology. At the moment, similar proportions of Democrats (74%) and Republicans (72%) say they are “very interested,” while fewer (67%) independents are. More self-described liberals (85%) than conservatives (75%) or moderates (63%) say they are “very interested.” More state voters expect to cast their ballot in person (62%) than by mail (31%), but there are strong partisan differences; half (52%) of Democrats intend to vote by mail while most Republicans (84%) and independents (58%) intend to vote in-person.

Democrat Joe Biden currently leads President Trump among the state’s registered voters, 49% to 42%. Partisanship and ideology are primary drivers of presidential preference, with Biden holding slightly larger portions of Democrats and liberals than President Trump holds among Republicans and conservatives. There are differences in candidate support associated with geography, specifically the urban-rural composition of a county, are also evident (see Attachment A-5)³. Four in five (78%) of those who plan to vote for the President say they are voting for him, not against Joe Biden. More than half (59%) of Biden’s supporters say they are voting against President Trump, not for him. There are far fewer registered voters in 2020 who express support for a third-party candidate or who are undecided compared to August, 2016.⁴

² 70% reported being “very interested” in the election and 91% said they were “certain” to vote in the August 2016 Franklin & Marshall College Poll.

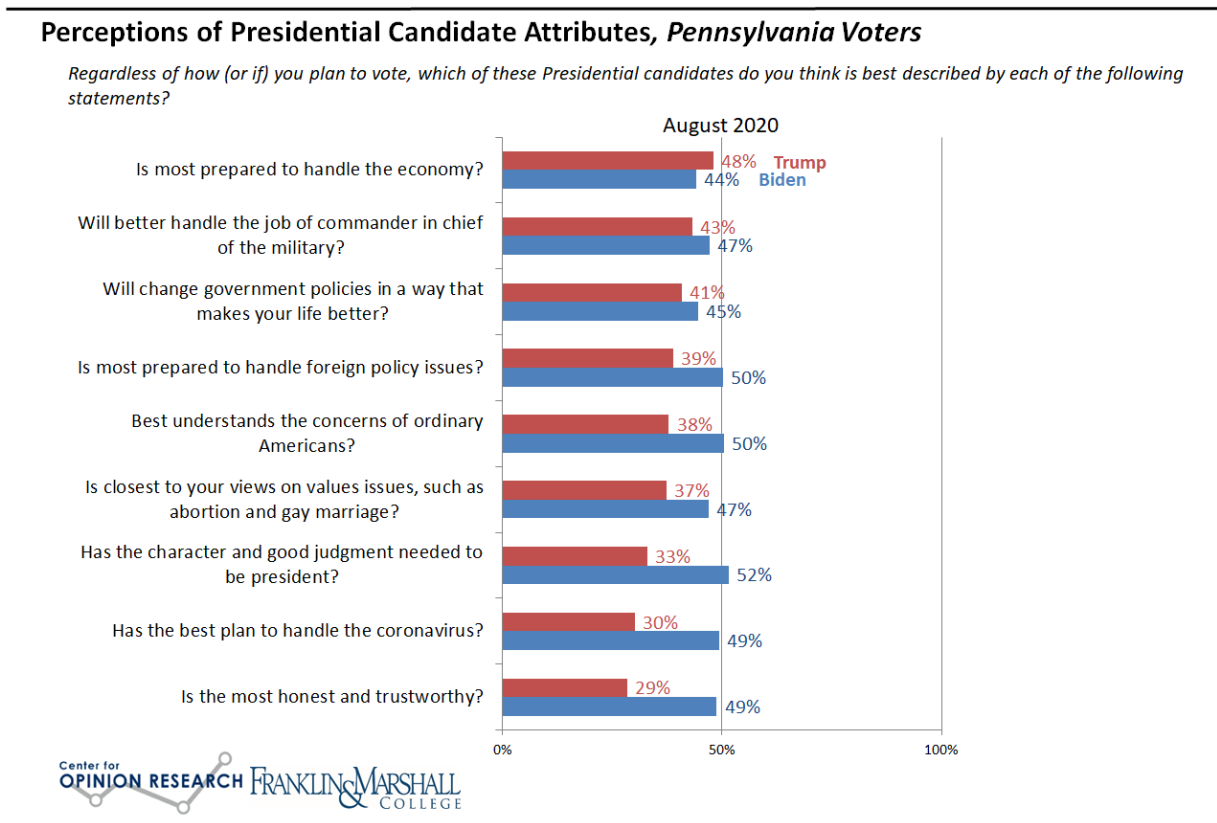
³ DD Ingram, SJ Franco. 2014. “NCHS Urban-Rural Classification Scheme for Counties.” 166. Vital Health Stat. Vol. 2. National Center for Health Statistics.

⁴ The August 2016 Franklin & Marshall College Poll found that 9% of voters expressed support for a third-party candidate and 10% were undecided.

Half (51%) of the sample reported watching the Democratic convention.⁵ More Democrats (60%) than independents (47%) or Republicans (42%) reported watching. One-quarter (27%) of Republicans and half (56%) of independents who watched the convention plan to vote for Joe Biden, compared to one in twenty (5%) Republicans and one in five (21%) independents who did not watch and who plan to vote for the Democrat.

President Trump continues to have an advantage, according to registered voters, when it comes to economic matters, but Mr. Biden holds an advantage over the President on all other characteristics tested (see Figure 3), most notably on issues in dealing with the coronavirus and on personal attributes such as character and honesty.

Figure 3:



⁵ The question was asked of the 532 respondents interviewed from August 18 – 23.

More of the state’s registered voters have an unfavorable (56%) than favorable (43%) opinion of President Trump; equal proportions have a favorable (48%) and unfavorable (49%) opinion of Joe Biden. One in ten (8%) voters has an unfavorable opinion of both candidates and most (40%) of these voters are currently undecided about their choice for president. An unusually large share of voters (16%) had an unfavorable opinion of both candidates in 2016.⁶ In 2012, only three percent of voters in Pennsylvania had an unfavorable opinion of both presidential candidates.⁷

⁶ This estimate is from the October 2016 Franklin & Marshall College Poll and is consistent with the estimate reported by the 2016 Pennsylvania exit poll: Edison Research exit polls showed 17% of PA voters had an unfavorable opinion of both candidates. The exit polling showed that these voters broke for Trump 56% to 31%.

⁷ These ratings are from the October 2012 Franklin & Marshall College Poll. The Poll showed that Mitt Romney’s net favorability rating was minus four and Barack Obama’s net favorability was plus four.

Methodology

The survey findings presented in this release are based on the results of interviews conducted August 17 - 23, 2020. The interviews were conducted at the Center for Opinion Research at Franklin & Marshall College on behalf of the Center for Politics and Public Affairs. The poll was designed and administered by the staff of the Center for Opinion Research. The data included in this release represent the responses of 681 Pennsylvania registered voters, including 321 Democrats, 272 Republicans, and 88 independents.⁸ The sample of registered voters was obtained from Marketing Systems Group. All sampled respondents were notified by mail about the survey. Interviews were completed over the phone and online depending on each respondent's preference. Survey results were weighted (age, gender, education, geography, and party registration) using an iterative weighting algorithm to reflect the known distribution of those characteristics. Estimates for age, geography, and party registration are based on active voters within the PA Department of State's Voter Registration Data. Gender and education is estimated using data from the November 2018 CPS Voter Registration Supplement.⁹

The sample error for this survey is +/- 5.2 percentage points when the design effects from weighting are considered. In addition to sampling error, this poll is also subject to other sources of non-sampling error. Generally speaking, two sources of error concern researchers most. Non-response bias is created when selected participants either choose not to participate in the survey or are unavailable for interviewing. Response errors are the product of the question and answer

⁸ The question reported here is self-reported voter REGISTRATION and is consistent with past reporting practices. The survey also asked about self-reported voter IDENTIFICATION, which shows a slightly different partisan split: 43% identify as Republican (n=290), 8% as Independent (n=55), and 45% as Democrat (n=330). Partisan comparisons in this summary show self-reported registration.

⁹ Data downloaded from IPUMS-CPS, University of Minnesota, www.ipums.org, accessed 12/31/2019.

process. Surveys that rely on self-reported behaviors and attitudes are susceptible to biases related to the way respondents process and respond to survey questions.

Attachment A-1

Most Important Problem Facing Pennsylvania: Registered Voters, Pennsylvania, August 2020

What do you think is the most important problem facing Pennsylvania today?

	COVID	Gov'n't & Politicians	Economy, Personal Finances	Other	Do not know
Party**					
Republican	26%	23%	22%	22%	7%
Democrat	36%	12%	22%	23%	7%
Independent or something else	28%	20%	22%	27%	3%
Ideology*					
Liberal	39%	11%	20%	24%	6%
Moderate	34%	13%	22%	24%	8%
Conservative	24%	27%	23%	21%	6%
Gender**					
Male	29%	22%	22%	22%	5%
Female	33%	14%	21%	24%	8%
Age					
Under 35	37%	15%	15%	24%	8%
35-54	30%	18%	23%	23%	5%
Over 55	29%	18%	23%	23%	7%
Education					
HS or less	34%	17%	22%	19%	7%
Some college	32%	17%	21%	22%	7%
College degree	28%	18%	22%	26%	6%
Race*					
White	33%	18%	20%	22%	7%
Nonwhite	14%	8%	38%	31%	8%
Race & Education, White Voters					
White, No College Degree	35%	18%	20%	20%	7%
White, College Degree	31%	18%	20%	25%	6%
Employment					
Fulltime	32%	19%	19%	23%	7%
Other	30%	15%	21%	28%	6%
Retired	30%	18%	24%	22%	6%
Income					
Under \$35,000	30%	15%	24%	20%	10%
\$35,000-\$75,000	29%	15%	23%	23%	9%
Over \$75,000	36%	18%	18%	24%	4%
"Born-again" or evangelical Christian*					
Yes	21%	29%	21%	20%	9%
No	35%	13%	21%	24%	6%
Region*					
Philadelphia & Southeast	28%	13%	18%	34%	7%
Northeast	34%	3%	33%	22%	8%
Allegheny & Southwest	30%	19%	28%	18%	6%
Northwest	12%	32%	24%	15%	18%
Central	38%	24%	16%	19%	3%
Urban-Rural Classification*					
Large Central Metro	30%	11%	25%	27%	7%
Large Fringe Metro	28%	17%	19%	28%	8%
Medium Metro	40%	16%	21%	18%	5%
Small Metro	38%	24%	21%	13%	5%
Micropolitan	12%	35%	26%	23%	3%
Noncore	19%	16%	21%	26%	17%

* p<0.01 ** p<0.05

Source: Survey conducted August 17-23, 2020

Attachment A-2

Pennsylvania's Response to COVID Outbreak: Registered Voters, Pennsylvania, August 2020

Do you think Pennsylvania has done a better, worse, or about the same as most other states in the way it has managed the coronavirus outbreak?

	Better	Worse	About the same	Do not know
Party*				
Republican	26%	34%	35%	5%
Democrat	73%	6%	19%	2%
Independent or something else	59%	11%	27%	2%
Ideology*				
Liberal	87%	2%	10%	1%
Moderate	58%	11%	29%	2%
Conservative	22%	36%	37%	5%
Gender				
Male	48%	21%	29%	2%
Female	55%	16%	25%	4%
Age				
Under 35	60%	14%	23%	2%
35-54	49%	21%	28%	2%
Over 55	50%	18%	27%	4%
Education*				
HS or less	50%	18%	26%	6%
Some college	43%	25%	28%	4%
College degree	60%	13%	26%	1%
Race				
White	51%	19%	26%	4%
Nonwhite	64%	8%	27%	1%
Race & Education, White Voters*				
White, No College Degree	46%	24%	26%	5%
White, College Degree	59%	13%	27%	2%
Employment				
Fulltime	49%	20%	28%	3%
Other	54%	19%	23%	3%
Retired	53%	14%	28%	5%
Income				
Under \$35,000	56%	14%	27%	3%
\$35,000-\$75,000	52%	17%	25%	6%
Over \$75,000	54%	19%	27%	1%
"Born-again" or evangelical Christian*				
Yes	32%	30%	30%	7%
No	58%	13%	26%	2%
Region*				
Philadelphia & Southeast	62%	10%	27%	2%
Northeast	58%	10%	30%	1%
Allegheny & Southwest	44%	21%	33%	2%
Northwest	28%	33%	36%	3%
Central	50%	25%	19%	7%
Urban-Rural Classification*				
Large Central Metro	56%	18%	25%	1%
Large Fringe Metro	52%	11%	33%	3%
Medium Metro	52%	22%	24%	2%
Small Metro	58%	13%	21%	8%
Micropolitan	43%	29%	26%	2%
Noncore	23%	36%	23%	19%

* p<0.01 ** p<0.05

Source: Survey conducted August 17-23, 2020

Attachment A-3

Presidential Job Performance: Registered Voters, Pennsylvania, August 2020

How would you rate the way that Donald Trump is handling his job as president? Would you say he is doing an excellent job, a good job, only a fair job, or a poor job as President?

	Excellent/Good	Fair/Poor	Do not know
Party*			
Republican	78%	22%	0%
Democrat	9%	91%	0%
Independent or something else	33%	67%	0%
Ideology*			
Liberal	3%	97%	0%
Moderate	21%	79%	0%
Conservative	84%	16%	0%
Gender**			
Male	45%	55%	0%
Female	37%	63%	1%
Age			
Under 35	33%	67%	0%
35-54	43%	57%	0%
Over 55	42%	58%	1%
Education*			
HS or less	44%	55%	1%
Some college	52%	48%	1%
College degree	29%	71%	0%
Race*			
White	42%	58%	0%
Nonwhite	17%	83%	0%
Race & Education, White Voters*			
White, No College Degree	51%	49%	1%
White, College Degree	29%	71%	0%
Employment			
Fulltime	39%	61%	0%
Other	44%	56%	0%
Retired	41%	58%	1%
Income			
Under \$35,000	36%	63%	1%
\$35,000-\$75,000	40%	60%	0%
Over \$75,000	37%	63%	0%
"Born-again" or evangelical Christian*			
Yes	70%	30%	1%
No	30%	70%	0%
Region*			
Philadelphia & Southeast	25%	75%	0%
Northeast	33%	67%	0%
Allegheny & Southwest	44%	56%	0%
Northwest	58%	39%	2%
Central	53%	47%	1%
Urban-Rural Classification*			
Large Central Metro	25%	75%	0%
Large Fringe Metro	37%	63%	0%
Medium Metro	44%	56%	0%
Small Metro	40%	58%	2%
Micropolitan	68%	32%	0%
Noncore	66%	29%	5%

* p<0.01 ** p<0.05

Source: Survey conducted August 17 - 23, 2020

Attachment A-4

2020 Presidential Election Voting Method: Registered Voters, Pennsylvania, August 2020

If you do vote in November, do you plan to vote by mail-in ballot, by absentee ballot, or will you vote in person?

	Mail-in ballot	Absentee ballot	In person	Do not know
Party*				
Republican	10%	4%	84%	3%
Democrat	52%	3%	42%	4%
Independent or something else	27%	2%	58%	13%
Ideology*				
Liberal	58%	4%	33%	6%
Moderate	39%	2%	51%	7%
Conservative	8%	3%	87%	2%
Gender*				
Male	24%	5%	67%	4%
Female	37%	1%	56%	5%
Age				
Under 35	31%	2%	63%	5%
35-54	28%	0%	67%	5%
Over 55	33%	5%	58%	5%
Education*				
HS or less	29%	3%	64%	5%
Some college	22%	4%	71%	3%
College degree	40%	2%	52%	6%
Race				
White	31%	3%	62%	4%
Nonwhite	40%	3%	51%	7%
Race & Education, White Voters*				
White, No College Degree	25%	4%	69%	3%
White, College Degree	40%	1%	53%	6%
Employment				
Fulltime	28%	2%	66%	5%
Other	32%	0%	62%	6%
Retired	35%	5%	56%	4%
Income				
Under \$35,000	35%	3%	59%	3%
\$35,000-\$75,000	29%	1%	66%	4%
Over \$75,000	33%	3%	58%	6%
"Born-again" or evangelical Christian*				
Yes	11%	2%	85%	3%
No	39%	3%	53%	5%
Region*				
Philadelphia & Southeast	41%	3%	49%	7%
Northeast	24%	3%	66%	7%
Allegheny & Southwest	33%	4%	64%	0%
Northwest	20%	1%	79%	0%
Central	25%	2%	68%	6%
Urban-Rural Classification*				
Large Central Metro	41%	6%	49%	4%
Large Fringe Metro	36%	1%	58%	4%
Medium Metro	27%	1%	66%	6%
Small Metro	22%	4%	68%	6%
Micropolitan	18%	3%	77%	2%
Noncore	7%	8%	81%	4%

* p<0.01 ** p<0.05

Source: Survey conducted August 17-23, 2020

Attachment A-5

2020 Presidential Election: Registered Voters, Pennsylvania, August 2020

If the 2020 election for President were being held today would you vote for:

	Trump	Biden	Other	Undecided
Party*				
Republican	81%	13%	2%	4%
Democrat	9%	82%	0%	8%
Independent or something else	36%	43%	12%	9%
Ideology*				
Liberal	4%	94%	0%	1%
Moderate	22%	63%	4%	11%
Conservative	84%	10%	3%	3%
Gender**				
Male	48%	43%	3%	6%
Female	36%	55%	2%	7%
Age				
Under 35	40%	42%	4%	13%
35-54	41%	50%	3%	6%
Over 55	43%	50%	2%	5%
Education*				
HS or less	42%	49%	1%	9%
Some college	52%	39%	2%	6%
College degree	33%	58%	3%	6%
Race*				
White	44%	47%	2%	6%
Nonwhite	8%	79%	3%	9%
Race & Education, White Voters*				
White, No College Degree	51%	41%	2%	6%
White, College Degree	34%	57%	3%	7%
Employment				
Fulltime	41%	47%	4%	8%
Other	44%	47%	1%	7%
Retired	42%	53%	2%	4%
Income				
Under \$35,000	40%	51%	1%	8%
\$35,000-\$75,000	40%	49%	2%	8%
Over \$75,000	38%	54%	3%	4%
"Born-again" or evangelical Christian*				
Yes	69%	22%	5%	4%
No	31%	59%	2%	7%
Region*				
Philadelphia & Southeast	26%	65%	3%	7%
Northeast	33%	47%	4%	16%
Allegheny & Southwest	45%	47%	1%	6%
Northwest	58%	36%	0%	6%
Central	55%	38%	3%	4%
Urban-Rural Classification*				
Large Central Metro	23%	69%	0%	8%
Large Fringe Metro	40%	50%	3%	6%
Medium Metro	46%	46%	2%	6%
Small Metro	45%	35%	8%	12%
Micropolitan	67%	32%	0%	0%
Noncore	66%	16%	5%	13%

* p<0.01 ** p<0.05

Source: Survey conducted August 17-23, 2020

Attachment A-6

2020 Democratic National Convention: Registered Voters, Pennsylvania, August 2020

The Democratic party is holding its convention this week, have you watched any of the convention coverage? (n=532)

	Yes	No
Party*		
Republican	42%	58%
Democrat	60%	40%
Independent or something else	47%	53%
Ideology*		
Liberal	63%	37%
Moderate	58%	42%
Conservative	36%	64%
Gender		
Male	51%	49%
Female	51%	49%
Age*		
Under 35	26%	74%
35-54	47%	53%
Over 55	61%	39%
Education		
HS or less	50%	50%
Some college	49%	51%
College degree	53%	47%
Race		
White	50%	50%
Nonwhite	60%	40%
Race & Education, White Voters		
White, No College Degree	48%	52%
White, College Degree	54%	46%
Employment*		
Fulltime	44%	56%
Other	48%	52%
Retired	64%	36%
Income		
Under \$35,000	53%	47%
\$35,000-\$75,000	46%	54%
Over \$75,000	52%	48%
"Bom-again" or evangelical Christian**		
Yes	40%	60%
No	54%	46%
Region*		
Philadelphia & Southeast	60%	40%
Northeast	39%	61%
Allegheny & Southwest	59%	41%
Northwest	35%	65%
Central	44%	56%
Urban-Rural Classification*		
Large Central Metro	65%	35%
Large Fringe Metro	53%	47%
Medium Metro	41%	59%
Small Metro	54%	46%
Micropolitan	51%	49%
Noncore	22%	78%

* p<0.01 ** p<0.05

Source: Survey conducted August 17-23, 2020

Marginal Frequency Report

Responses may not total 100% due to rounding.

REG. Some people are registered to vote, and many others are not. Are you currently registered to vote at your present address?

Yes 100%
No 0%

RegPARTY. Are you currently registered as a Republican, a Democrat, an Independent, or as something else?

Republican 40%
Democrat 47%
Independent 11%
Something else 1%

Please let me know your opinion of some people involved in politics today. Is your opinion of [FILL name] favorable, unfavorable, undecided, or haven't you heard enough about [FILL name] to have an opinion? (rotated)

	Strongly favorable	Somewhat favorable	Somewhat unfavorable	Strongly unfavorable	Undecided	Do not know
DONALD TRUMP						
Aug 2020	29%	14%	6%	50%	1%	0%
Jul 2020	29%	13%	3%	53%	1%	1%
Jan 2020	28%	13%	7%	48%	2%	1%
Oct 2019	23%	15%	8%	52%	2%	0%
Jul 2019	26%	13%	6%	52%	3%	1%
Mar 2019	24%	14%	9%	52%	2%	1%
Oct 2018	25%	11%	6%	55%	2%	1%
Sep 2018	26%	14%	4%	55%	0%	1%
Aug 2018	26%	13%	5%	52%	3%	1%
Jun 2018	26%	14%	7%	51%	3%	0%
Mar 2018	21%	15%	11%	49%	2%	2%
Sep 2017	21%	22%	9%	36%	6%	6%
Feb 2017	23%	14%	6%	51%	6%	1%
Oct 2016	23%	12%	6%	56%	3%	1%
Sep 2016	20%	12%	6%	54%	6%	1%
Aug 2016	23%	14%	7%	51%	5%	1%
Jul 2016	20%	13%	5%	57%	5%	0%
Mar 2016	13%	14%	9%	56%	7%	1%
Feb 2016	12%	15%	11%	51%	10%	1%

	Strongly favorable	Somewhat favorable	Somewhat unfavorable	Strongly unfavorable	Undecided	Do not know
JOE BIDEN						
Aug 2020	29%	19%	11%	38%	3%	1%
Jul 2020	22%	26%	10%	38%	2%	2%
Jan 2020	13%	30%	18%	29%	5%	6%
Oct 2019	17%	29%	15%	30%	6%	4%
Jul 2019	16%	30%	19%	25%	7%	4%
TOM WOLF						
Aug 2020	23%	31%	13%	25%	4%	5%
Jul 2020	27%	28%	13%	23%	5%	5%
Mar 2019	19%	35%	16%	15%	3%	11%
Oct 2018	32%	26%	13%	19%	4%	7%
Sep 2018	27%	27%	14%	19%	4%	9%
Aug 2018	20%	28%	15%	21%	3%	13%
Jun 2018	19%	30%	14%	19%	5%	13%
Mar 2018	19%	31%	16%	16%	6%	12%
Sep 2017	16%	20%	8%	34%	12%	10%
Feb 2017	12%	29%	15%	19%	13%	11%
Feb 2016	14%	25%	16%	27%	9%	9%
Oct 2015	15%	23%	13%	20%	16%	13%
Aug 2015	22%	21%	9%	17%	18%	13%
Jun 2015	21%	23%	10%	17%	19%	11%
Mar 2015	22%	18%	11%	16%	22%	11%
Oct 2014	20%	20%	7%	18%	18%	16%
Sep 2014	19%	21%	9%	13%	18%	21%
Aug 2014	18%	19%	7%	10%	22%	24%
Jun 2014	15%	20%	5%	7%	20%	32%

RightDir All in all, do you think things in Pennsylvania are generally headed in the right direction, or do you feel that things are off on the wrong track?

	Headed in Right Direction	Off on the Wrong Track	Do not know
Aug 2020	46%	40%	14%
Jul 2020	48%	40%	12%
Jan 2020	51%	34%	15%
Oct 2019	57%	31%	12%
Jul 2019	51%	36%	13%
Mar 2019	49%	37%	15%
Oct 2018	51%	37%	11%
Sep 2018	51%	36%	14%
Aug 2018	46%	36%	18%
Jun 2018	45%	39%	16%
Mar 2018	46%	40%	15%
Sep 2017	37%	48%	16%

	Headed in Right Direction	Off on the Wrong Track	Do not know
May 2017	31%	50%	19%
Feb 2017	35%	52%	13%
Mar 2016	24%	66%	10%
Feb 2016	21%	67%	12%
Jan 2016	21%	67%	12%
Oct 2015	26%	62%	12%
Aug 2015	32%	54%	13%
Jun 2015	36%	47%	17%
Mar 2015	39%	47%	15%
Oct 2014	28%	61%	11%
Sep 2014	29%	60%	11%
Aug 2014	27%	61%	13%
Jun 2014	30%	59%	11%
Jan 2014	25%	62%	13%
Oct 2013	25%	61%	13%
Aug 2013	26%	62%	12%
May 2013	28%	58%	13%
Aug 2012	31%	56%	13%
Jun 2012	30%	57%	13%
Feb 2012	31%	56%	13%
Jan 2012	38%	47%	15%
Oct 2011	38%	49%	13%
Aug 2011	34%	53%	13%
Mar 2011	37%	53%	10%
Oct 2010	27%	64%	9%
Sep 2010	31%	59%	10%
Aug 2010	30%	58%	12%
May 2010	35%	55%	10%
Mar 2010	32%	58%	10%

MIP_PA. What do you think is the most important problem facing Pennsylvania today?

	Aug 2020	Jul 2020	Jan 2020	Oct 2019	Jul 2019	Mar 2019	Oct 2018	Sep 2018	Aug 2018	Jun 2018	Mar 2018	Sep 2017	May 2017	Feb 2017	Mar 2016
COVID-19	31%	32%	--	--	--	--	--	--	--	--	--	--	--	--	--
Government, politicians	18%	13%	18%	12%	12%	9%	14%	14%	16%	13%	16%	30%	22%	24%	45%
Unemployment, personal finances	12%	7%	13%	9%	12%	6%	12%	9%	14%	5%	12%	9%	8%	12%	13%
Education, school	5%	6%	6%	11%	13%	12%	9%	11%	13%	7%	9%	11%	17%	16%	13%
Taxes	5%	5%	11%	16%	16%	14%	14%	12%	10%	12%	15%	11%	12%	11%	7%
Economy, finances	10%	5%	3%	2%	4%	9%	5%	6%	3%	9%	5%	7%	3%	3%	5%
Crime, drugs, violence, guns	3%	3%	8%	10%	8%	9%	7%	6%	6%	8%	10%	6%	5%	5%	1%
Healthcare, insurance	2%	3%	8%	6%	7%	7%	8%	4%	3%	5%	2%	4%	8%	4%	2%
Environment	1%	1%	6%	4%	2%	3%	2%	3%	3%	2%	2%	1%	3%	2%	1%
Roads, infrastructure, transportation	2%	1%	5%	7%	3%	6%	5%	4%	5%	7%	3%	2%	4%	4%	2%
Social issues	1%	1%	3%	0%	0%	2%	0%	0%	2%	1%	6%	1%	2%	2%	1%
Energy issues, gas prices	1%	1%	2%	2%	1%	2%	2%	3%	2%	3%	0%	3%	1%	3%	2%
Racism	1%	1%	1%	1%	0%	1%	0%	0%	0%	1%	1%	1%	0%	1%	0%
Retaining, attracting businesses	0%	1%	1%	0%	0%	1%	1%	2%	1%	0%	1%	0%	1%	2%	1%
Housing and real estate	0%	1%	0%	1%	0%	0%	0%	1%	0%	0%	0%	0%	0%	0%	0%
Justice system, Lawyers	0%	1%	0%	0%	1%	1%	0%	0%	0%	1%	1%	0%	0%	1%	0%
Civil liberties	0%	1%	0%	0%	0%	1%	0%	0%	0%	0%	0%	1%	0%	1%	0%
Immigration	0%	0%	2%	1%	1%	2%	2%	2%	2%	3%	1%	1%	1%	1%	0%
Values, morals	1%	0%	1%	2%	2%	1%	0%	0%	0%	1%	0%	1%	0%	1%	1%
Senior issues, social security	0%	0%	1%	1%	1%	1%	0%	1%	1%	1%	0%	0%	1%	0%	0%
Personal illness, health problems	0%	0%	1%	1%	0%	1%	0%	0%	0%	0%	0%	0%	0%	0%	0%
Welfare	1%	0%	0%	1%	1%	0%	0%	1%	0%	1%	1%	1%	0%	1%	1%
Global events	0%	0%	0%	0%	2%	0%	0%	0%	0%	0%	0%	0%	0%	0%	0%
Bipartisanship	0%	0%	0%	0%	1%	1%	0%	2%	0%	2%	1%	2%	0%	0%	0%
Align with political views/platforms	0%	0%	0%	0%	1%	0%	0%	2%	0%	0%	0%	0%	0%	0%	0%
Population, urban sprawl	0%	0%	0%	0%	1%	0%	0%	0%	0%	0%	0%	1%	0%	0%	0%
Daycare	0%	0%	0%	0%	0%	1%	0%	0%	0%	1%	0%	0%	0%	0%	0%
Transportation, availability	0%	0%	0%	0%	0%	0%	0%	1%	0%	0%	0%	0%	0%	0%	0%
Population loss, movement out of state	0%	0%	0%	0%	0%	0%	0%	0%	0%	0%	1%	0%	0%	0%	0%
Other	1%	12%	5%	2%	4%	4%	5%	4%	7%	3%	5%	2%	5%	4%	3%
Do not know	7%	7%	8%	11%	9%	10%	10%	14%	12%	14%	13%	5%	7%	6%	3%

Rate_Gov. How would you rate the way that Tom Wolf is handling his job as Governor? Would you say he is doing an excellent job, a good job, only a fair job, or a poor job as Governor?

	Excellent job	Good job	Only a fair job	Poor job	Don't know
Aug 2020	15%	34%	22%	27%	3%
Jul 2020	16%	36%	23%	24%	2%
Mar 2019	11%	40%	29%	13%	8%
Oct 2018	14%	40%	28%	16%	3%
Sep 2018	12%	38%	27%	18%	6%
Aug 2018	8%	38%	28%	20%	6%
Jun 2018	9%	36%	33%	16%	6%
Mar 2018	6%	37%	33%	16%	8%
Sep 2017	4%	34%	36%	19%	7%
May 2017	5%	36%	35%	17%	8%
Feb 2017	4%	34%	35%	19%	8%
Feb 2016	4%	27%	32%	29%	7%
Jan 2016	5%	28%	36%	26%	6%
Oct 2015	6%	30%	37%	21%	6%
Aug 2015	7%	32%	34%	17%	10%
Jun 2015	8%	31%	34%	16%	13%
Mar 2015	7%	31%	29%	14%	19%

CV. Do you think the Pennsylvania has done a better, worse, or about the same as most other states in the way it has managed the coronavirus outbreak?

Better	52%
Worse	18%
About the same	27%
Do not know	3%

Vote_Nov. Many people will vote in the election in November, however, many other people will not. What would you say are the chances you will vote in the November election? Are you certain to vote, will you probably vote, are the chances fifty-fifty you will vote, OR don't you think that you will vote in the November election?

	Aug 2020	Jul 2020	Jan 2020
Certain to vote	96%	97%	94%
Probably vote	2%	2%	4%
Chances are fifty-fifty	2%	1%	1%
Do not think that they will vote	0%	0%	0%

Mail. If you do vote in November, do you plan to vote by mail-in ballot, by absentee ballot, or will you vote in person?

Mail-in ballot	31%
Absentee ballot	3%
In person	62%
Do not know	5%

Pol_Int. Some people don't pay much attention to political campaigns. How about you? Would you say that you are...very much interested, somewhat interested or not very interested in the 2020 elections?

	Aug 2020	Jul 2020	Jan 2020
Very much interested	72%	74%	67%
Somewhat interested	23%	22%	29%
Not very interested	6%	4%	4%

PRES20. If the 2020 election for President were being held today would you vote for:

	Aug 2020	Jul 2020
Joe Biden, the Democrat	49%	50%
Donald Trump, the Republican	42%	41%
Some other candidate	3%	2%
Aren't you sure how you would vote	7%	6%

Cert. Are you absolutely certain you will vote for [fill Pres20] in the election, or are you still making up your mind?

	Trump <i>n=279</i>	Biden <i>n=329</i>
Certain to vote for named candidate	94%	97%
Still making up mind	6%	3%

Lean. As of today, do you lean more to Joe Biden, the Democrat, Donald Trump, the Republican, or are you leaning toward some other candidate?

	<i>n=45</i>
Joe Biden, the Democrat	23%
Donald Trump, the Republican	15%
Some other candidate	8%
Do not know	54%

VOTE_DT. Would you say your decision to vote for Donald Trump is more of a vote for him or against Joe Biden?

	Aug 2020 <i>n=279</i>	Jul 2020 <i>n=269</i>
For Trump	78%	78%
Against Biden	20%	22%
Do not know	3%	0%

VOTE_JB. Would you say your decision to vote for Joe Biden is more of a vote for him or against Donald Trump?

	Aug 2020 <i>n=329</i>	Jul 2020 <i>n=269</i>
For Biden	38%	43%
Against Trump	59%	55%
Do not know	2%	1%

CONVD. The Democratic party is holding its convention this week, have you watched any of the convention coverage?

	<i>n=532</i>
Yes	51%
No	49%

CONDRATE. Did watching the convention make you more likely or less likely to vote for Joe Biden?

	<i>n=270</i>
Much more likely	39%
Somewhat more likely	22%
Somewhat less likely	10%
Much less likely	20%
Do not know	9%

Regardless of how you plan to vote, which presidential candidate do you think is best described by each of the following statements? Do you think Joe Biden or Donald Trump:

	Trump	Biden	Neither	Don't know
Best understands the concerns of ordinary Americans?	38%	50%	11%	1%
Is most prepared to handle the economy?	48%	44%	4%	3%
Is closest to your views on values issues, such as abortion and gay marriage?	37%	47%	10%	6%
Will better handle the job of commander in chief of the military?	43%	47%	5%	5%
Is most prepared to handle foreign policy issues?	39%	50%	8%	3%
Has the best plan to handle the coronavirus?	30%	49%	15%	6%
Will change government policies in a way that makes your life better?	41%	45%	10%	5%
Has the character and good judgment needed to be president?	33%	52%	14%	2%
Is the most honest and trustworthy?	29%	49%	18%	4%

RatePres. How would you rate the way that Donald Trump is handling his job as president? Would you say he is doing an excellent job, a good job, only a fair job, or a poor job as President?

	Excellent Job	Good Job	Only a Fair Job	Poor Job	Don't Know
Aug 2020	21%	20%	9%	50%	0%
Jul 2020	18%	20%	9%	52%	0%
Jan 2020	21%	17%	12%	49%	0%
Oct 2019	14%	21%	11%	54%	0%
Jul 2019	21%	16%	11%	52%	0%
Mar 2019	18%	16%	13%	53%	0%
Oct 2018	22%	14%	12%	52%	0%
Sep 2018	18%	19%	8%	55%	0%
Aug 2018	18%	20%	10%	52%	1%
Jun 2018	17%	18%	13%	52%	0%
Mar 2018	13%	17%	16%	54%	1%
Sep 2017	13%	16%	18%	53%	1%
May 2017	13%	24%	14%	49%	2%
Feb 2017	13%	19%	13%	54%	1%

GenBalH If the 2020 elections for the United States House of Representatives were being held today, would you vote for <SELGENBALH> for the House in your district?

	Aug 2020	Jul 2020	Jan 2020
Democratic Party's candidate	45%	46%	45%
Republican Party's candidate	42%	42%	38%
Do not know	13%	12%	16%

NAT. Do you agree or disagree with the following statement: it is important to me that the candidates I support in state house and senate elections think about issues and problems in the same ways as the candidate I support for president.

Strongly agree	47%
Somewhat agree	41%
Somewhat disagree	8%
Strongly disagree	3%
Do not know	2%

ER1. Are you generally satisfied or dissatisfied with the rules and procedures that guide the way elections, including primary elections, are conducted in the state?

Very satisfied	28%
Somewhat satisfied	44%
Somewhat dissatisfied	16%
Very dissatisfied	8%
Do not know	6%

ER2. What is the one change you would most like to see to Pennsylvania's elections?

	<i>n=156</i>
How candidates get on ballot	25%
Third Party	10%
Open primaries	7%
Organization of mail-in voting	7%
In-person or absentee voting only, no mail-in ballot	6%
Paper ballots	6%
Early voting	4%
Make Election Day a holiday	4%
All mail-in ballots	2%
Popular vote not electoral college	2%
End gerrymandering	2%
Voter ID	1%
Complete overhaul	1%
Online voting	1%
Other	16%
Do not know	7%

ER3. Pennsylvania is one of nine states with publicly-funded primary elections in which only registered Democrats can vote for Democratic candidates and only registered Republicans can vote for Republican candidates. Would you favor or oppose having open primary elections in Pennsylvania that allow any voter to vote in either the Democrat or Republican primary election?

Strongly favor	48%
Somewhat favor	19%
Somewhat oppose	11%
Strongly oppose	16%
Do not know	6%

ER4. Several states use a “top two” primary election in which candidates from all parties are listed on the same ballot and the top two vote getters, regardless of party, advance to the general election. Would you favor or oppose having top-two primary elections where all voters participate and the two candidates with the most votes advance to the general election?

Strongly favor	24%
Somewhat favor	27%
Somewhat oppose	12%
Strongly oppose	21%
Do not know	16%

ER5. In Pennsylvania elections today, when there are more than two candidates running for an office, the winning candidate must only receive the most votes, even if that’s less than half of the total. Several cities and states now use ranked-choice voting (RCV) in their elections. In RCV, voters rank their preferred candidates instead of voting only for one. To win, a candidate must receive at least half of the total votes cast, not just the most first place votes. Would you favor or oppose using ranked-choice voting in Pennsylvania elections?

Strongly favor	14%
Somewhat favor	23%
Somewhat oppose	20%
Strongly oppose	23%
Do not know	20%

RightDirUS. All in all, do you think things in the United States are generally headed in the right direction, or do you feel that things are off on the wrong track?

	Headed in Right Direction	Off on the Wrong Track	Do not know
Aug 2020	27%	68%	5%
Jul 2020	24%	71%	5%
Jan 2020	38%	58%	4%
Oct 2019	35%	59%	6%
Jul 2019	34%	62%	5%
Mar 2019	30%	65%	6%
Oct 2018	35%	61%	4%
Sep 2018	36%	60%	4%
Feb 2017	29%	66%	6%
Oct 2016	35%	58%	7%
Sep 2016	36%	57%	7%
Aug 2016	32%	61%	7%
Jul 2016	38%	57%	5%

Imm1. When people from other countries legally move to the United States to live and work, is this generally good for the US, generally bad for the US, or neither good nor bad?

	Aug 2020	Jul 2020	Jan 2020
Generally good	76%	68%	71%
Generally bad	3%	8%	6%
Neither good nor bad	19%	23%	21%
Do not know	2%	2%	2%

Imm2. Should the number of people who are allowed to legally move to the United States to live and work be: *(rotated)*

	Aug 2020	Jul 2020	Jan 2020
Increased	28%	29%	33%
Decreased	10%	15%	14%
Kept the same	43%	41%	40%
Do not know	19%	16%	13%

PrimNews What is your primary source for news?

	Aug 2020	Jul 2020	Jan 2020	Jul 2019	Mar 2019	Oct 2018	Sep 2018	Aug 2018	May 2017	Feb 2017	Oct 2016	Sep 2016
Internet <i>(other than social media)*</i>	25%	28%	26%	28%	29%	21%	27%	25%	28%	28%	33%	32%
Cable television, such as Fox, CNN, or MSNBC	31%	25%	28%	27%	27%	31%	30%	28%	28%	31%	29%	30%
Network television, such as ABC, CBS, or NBC	18%	21%	22%	20%	21%	18%	20%	20%	15%	18%	19%	20%
Daily newspaper	7%	11%	6%	7%	6%	9%	8%	7%	12%	8%	7%	8%
Social media	7%	8%	6%	6%	5%	7%	5%	5%	4%	3%	--	--
Radio	7%	3%	7%	7%	8%	10%	6%	9%	8%	8%	7%	7%
Neighborhood newspaper	1%	1%	1%	1%	2%	2%	1%	2%	3%	1%	2%	2%
Other	5%	4%	3%	5%	3%	3%	4%	9%	2%	3%	4%	2%
Do not know	0%	0%	0%	0%	0%	0%	0%	0%	1%	1%	0%	1%

**updated to exclude social media in February 2017*

CabNet Which cable network do you rely on the most? (*cable television respondents*)

	Aug 2020 <i>n=205</i>	Jul 2020 <i>n=162</i>	Jan 2020 <i>n=174</i>	Jul 2019 <i>n=170</i>	Mar 2019 <i>n=142</i>	Oct 2018 <i>n=166</i>	Sep 2018 <i>n=159</i>	Aug 2018 <i>n=141</i>	May 2017 <i>n=180</i>
Fox News	46%	49%	51%	56%	37%	52%	53%	43%	50%
CNN	24%	25%	20%	21%	19%	24%	22%	22%	22%
MSNBC	17%	17%	18%	15%	27%	19%	16%	20%	18%
OAN Network	1%	0%	3%	1%	0%	0%	0%	0%	1%
NBC	1%	0%	0%	1%	1%	0%	1%	0%	3%
CNBC	0%	1%	1%	0%	1%	0%	0%	0%	0%
CBS	0%	0%	1%	0%	3%	0%	1%	0%	0%
ABC	0%	0%	1%	0%	1%	0%	0%	0%	0%
PBS	0%	0%	1%	0%	0%	0%	0%	3%	0%
HLN	0%	0%	0%	0%	0%	0%	2%	0%	1%
None, nothing	0%	0%	0%	0%	1%	0%	0%	1%	0%
Other	3%	7%	4%	5%	9%	6%	5%	7%	5%
Do not know	6%	2%	1%	2%	2%	0%	0%	3%	2%

FinToday. We are interested in how people are getting along financially these days. Would you say that you and your family are better off, worse off, or about the same financially as you were a year ago?

	Better off	Worse off	About the same	Do not know
Aug 2020	23%	17%	60%	0%
Jul 2020	20%	17%	62%	1%
Jan 2020	33%	12%	54%	0%
Oct 2019	30%	18%	52%	0%
Jul 2019	29%	16%	55%	1%
Mar 2019	32%	17%	52%	0%
Oct 2018	28%	11%	61%	0%
Sep 2018	31%	13%	56%	1%
Sep 2017	16%	13%	69%	2%
Feb 2017	21%	19%	60%	1%
Oct 2016	22%	24%	53%	1%
Sep 2016	23%	21%	56%	1%
Aug 2016	24%	24%	52%	1%

FinFut. Now looking ahead, do you think that a year from now, you and your family will be better off financially than you are now, worse off, or about the same as you are now?

	Better off	Worse off	About the same	Do not know
Aug 2020	24%	9%	52%	15%
Jul 2020	17%	13%	60%	10%
Jan 2020	31%	6%	53%	10%
Oct 2019	31%	11%	51%	8%
Jul 2019	28%	9%	58%	5%
Mar 2019	29%	11%	54%	7%
Oct 2018	27%	11%	56%	6%
Sep 2018	31%	10%	55%	5%
Feb 2017	28%	15%	49%	8%
Oct 2016	25%	7%	49%	19%
Sep 2016	25%	7%	52%	16%
Aug 2016	25%	8%	53%	14%

CNTY. Region of state (What is the name of the county you live in?)

Central	29%
Southeast	21%
Southwest	9%
Northeast	12%
Philadelphia	10%
Northwest	8%
Allegheny	11%

AGE. What was your age on your last birthday?

Under 35	17%
35-54	32%
Over 55	51%

EDUC. What was the highest level of schooling you have completed?

High school graduate or less	24%
Some college	35%
College degree	41%

MAR. What is your current marital status?

Married	55%
Single, Never Married	21%
Divorced	15%
Widow or widower	9%
Separated	0%

IDEO. Politically speaking, do you consider yourself to be a liberal, a moderate, or a conservative?

	Liberal	Moderate	Conservative	Don't know
Aug 2020	21%	37%	34%	6%
Jul 2020	24%	36%	34%	7%
Jan 2020	24%	38%	34%	5%
Oct 2019	24%	40%	30%	6%
Jul 2019	32%	27%	36%	5%
Mar 2019	31%	32%	33%	4%
Oct 2018	29%	36%	35%	0%
Sep 2018	28%	36%	31%	5%
Aug 2018	25%	33%	37%	5%
Jun 2018	27%	40%	33%	0%
Mar 2018	27%	40%	33%	0%
May 2017	26%	41%	30%	2%
Feb 2017	27%	42%	31%	0%
Oct 2016	33%	29%	34%	4%
Sep 2016	31%	28%	38%	4%
Aug 2016	31%	32%	33%	4%
Jul 2016	33%	30%	33%	4%
Mar 2016	24%	35%	37%	3%
Feb 2016	27%	33%	37%	3%
Jan 2016	22%	39%	36%	4%
Oct 2015	22%	38%	37%	4%
Aug 2015	21%	36%	40%	3%
Jun 2015	23%	35%	39%	4%
Oct 2014	23%	37%	36%	3%
Sept 2014	22%	36%	38%	5%
Aug 2014	20%	39%	36%	5%
Jun 2014	26%	36%	34%	5%
Jan 2014	24%	43%	28%	5%
Oct 2013	24%	39%	31%	6%
Aug 2013	22%	42%	33%	3%
May 2013	24%	39%	31%	6%
Feb 2013	26%	36%	35%	3%
Oct 2012	22%	39%	35%	5%
Sep 2012	26%	34%	35%	5%
Aug 2012	21%	40%	36%	4%
Jun 2012	25%	34%	36%	5%
Feb 2012	17%	39%	40%	4%
Jan 2011	21%	39%	36%	4%
Oct 2011	20%	39%	33%	8%
Aug 2011	24%	32%	37%	7%
Mar 2011	16%	33%	41%	10%

	Liberal	Moderate	Conservative	Don't know
Oct 2010	16%	37%	39%	8%
Sep 2010	15%	34%	40%	10%
Aug 2010	19%	32%	40%	9%
May 2010	19%	32%	40%	9%

PARTY. Regardless of how you are registered in politics, as of today, do you think of yourself as a Republican, a Democrat, or an Independent?

Republican	41%
Democrat	47%
Independent or something else	12%

How strongly do you agree or disagree with the following statements?

		Aug 2020		Jul 2020	
		Republican Party n=290	Democratic Party n=302	Republican Party n=287	Democratic Party n=310
When people criticize the <PARTY_FILL> party, it feels like a personal insult.	Strongly agree	13%	12%	20%	13%
	Somewhat agree	30%	29%	25%	24%
	Somewhat disagree	26%	28%	27%	32%
	Strongly disagree	28%	29%	26%	28%
	Do not know	2%	1%	2%	2%
When I meet someone who supports the <PARTY_FILL> party, I feel connected with this person.	Strongly agree	32%	31%	31%	29%
	Somewhat agree	47%	47%	47%	53%
	Somewhat disagree	10%	13%	14%	7%
	Strongly disagree	6%	6%	4%	5%
	Do not know	6%	3%	5%	6%
When I speak about the <PARTY_FILL> party, I refer to them as "my party."	Strongly agree	33%	25%	33%	21%
	Somewhat agree	28%	25%	28%	25%
	Somewhat disagree	18%	28%	20%	28%
	Strongly disagree	18%	19%	15%	23%
	Do not know	2%	3%	4%	3%
When people praise the <PARTY_FILL> party, it makes me feel good.	Strongly agree	30%	28%	32%	23%
	Somewhat agree	43%	42%	39%	50%
	Somewhat disagree	12%	16%	17%	15%
	Strongly disagree	6%	9%	7%	7%
	Do not know	8%	5%	5%	5%

GUN. Are you a gun owner?

Yes 38%
No 61%

GUN2. Generally speaking, do you favor or oppose creating more laws that regulate gun ownership?

	Strongly favor	Somewhat favor	Somewhat oppose	Strongly oppose	Don't know
Jul 2020	38%	20%	11%	28%	2%
Jan 2020	42%	18%	10%	27%	4%
Oct 2019	46%	14%	12%	24%	3%
Jul 2019	47%	17%	10%	23%	3%
Mar 2019	48%	14%	9%	26%	3%
Oct 2018	46%	19%	9%	24%	2%
Sep 2018	45%	20%	8%	23%	3%
Aug 2018	47%	17%	12%	22%	2%
Jun 2018	54%	15%	9%	20%	2%
Mar 2018	52%	20%	7%	19%	3%
Sep 2017	38%	23%	11%	24%	4%
Feb 2017	42%	19%	14%	23%	2%
Oct 2016	38%	27%	12%	21%	4%
Sep 2016	44%	21%	10%	23%	3%
Aug 2016	38%	16%	16%	26%	3%
Jul 2016	43%	18%	10%	25%	4%
Mar 2016	42%	17%	10%	28%	3%
Feb 2016	40%	16%	13%	29%	3%
Jan 2016	40%	15%	13%	29%	3%
Oct 2015	43%	13%	10%	31%	4%
Aug 2015	40%	14%	10%	32%	5%
Jun 2015	38%	13%	12%	33%	5%
Oct 2014	42%	12%	8%	37%	2%
Sep 2014	39%	14%	10%	32%	5%
Aug 2014	39%	14%	10%	31%	6%
Jun 2014	43%	12%	9%	31%	5%
Jan 2014	42%	12%	9%	32%	6%
Oct 2013	46%	16%	9%	24%	5%
Aug 2013	39%	12%	13%	33%	4%

LABR. Are you or is any member of your household a member of a LABOR UNION?

Yes 18%
No 81%
Do not know 1%

VET. Are you a military veteran?

Yes 14%
No 86%

Hisp. Are you Hispanic or Latino, or not?

Yes 3%
No 97%

RACE. Which of the following categories best describes your racial background?

White 91%
Non-white 9%

How strongly do you agree or disagree with the following statements?

		Aug 2020	Jul 2020	Jan 2020
I am angry that racism exists.	Strongly agree	73%	73%	75%
	Somewhat agree	18%	16%	16%
	Somewhat disagree	4%	5%	6%
	Strongly disagree	5%	5%	3%
	Do not know	2%	2%	1%
White people in the US have certain advantages because of the color of their skin.	Strongly agree	36%	38%	33%
	Somewhat agree	24%	24%	28%
	Somewhat disagree	14%	13%	16%
	Strongly disagree	24%	24%	22%
	Do not know	1%	2%	2%
Racial problems in the US are rare, isolated situations.	Strongly agree	8%	6%	8%
	Somewhat agree	16%	14%	13%
	Somewhat disagree	20%	18%	21%
	Strongly disagree	54%	60%	55%
	Do not know	3%	2%	3%
I am fearful of people of other races.	Strongly agree	1%	1%	3%
	Somewhat agree	4%	4%	3%
	Somewhat disagree	14%	14%	13%
	Strongly disagree	80%	81%	80%
	Do not know	1%	1%	0%

REL. Do you consider yourself to be Protestant, Catholic, some other religion, or not affiliated with any religion?

Protestant	29%
Catholic	28%
Some other religion	16%
Not affiliated with any religion	26%
Do not know	1%

BAC. Would you consider yourself as a “Born-again” or evangelical Christian, or not?

Yes	24%
No	75%
Don’t know	1%

ABORT. Do you think that abortion should be legal under any circumstances, legal under certain circumstances, or illegal in all circumstances?

	Legal under any circumstances	Legal under certain circumstances	Illegal in all circumstances	Don’t know
Aug 2020	28%	55%	16%	2%
Jul 2020	33%	51%	14%	3%
Jan 2020	33%	52%	13%	3%
Oct 2019	29%	53%	16%	2%
Jul 2019	32%	50%	16%	2%
Oct 2018	34%	53%	12%	1%
Sep 2018	34%	51%	12%	2%
Aug 2018	30%	54%	15%	1%
Jun 2014	23%	56%	19%	2%
Sep 2010	20%	56%	22%	2%
Aug 2010	18%	61%	19%	3%
May 2010	21%	58%	19%	2%
Mar 2010	19%	56%	23%	2%
Feb 2010	19%	57%	22%	2%
Jan 2010	23%	50%	24%	3%
Oct 2009	20%	54%	23%	3%
Aug 2009	21%	54%	23%	2%
Jun 2009	18%	58%	22%	2%
Aug 2007	22%	56%	21%	1%
Jun 2007	21%	58%	20%	1%
Feb 2007	20%	53%	26%	1%

NUMC. How many children under 18 years of age currently live in your household?

None	73%
One	15%
2-3	11%
4 or more	1%

WORK. Are you currently working fulltime, part-time, going to school, keeping house or something else?

Full-time	50%
Retired	31%
Part-time	7%
Something else	4%
Disabled	3%
Unemployed	3%
Going to school	1%

INCOME. And, just for statistical purposes, we need to know if your total family income is above or below \$50,000 per year?

Under \$25,000	9%
\$25-\$35,000	6%
\$35-50,000	15%
\$50-75,000	22%
\$75-100,000	18%
Over \$100,000	1%
Don't know	3%

DONE. Sex of respondent:

Male	48%
Female	52%