

FRANKLIN & MARSHALL

February 2017

Franklin & Marshall

College Poll

SUMMARY OF FINDINGS

Prepared by:

Center for Opinion Research

Floyd Institute for Public Policy

Franklin & Marshall College

Table of Contents

TABLE OF CONTENTS..... 2

KEY FINDINGS..... 3

GOVERNOR WOLF: STATE ISSUES, JOB PERFORMANCE AND THE STATE BUDGET 4

PRESIDENT TRUMP: JOB PERFORMANCE AND NATIONAL ISSUES 6

METHODOLOGY..... 9

ATTACHMENT A-1..... 10

ATTACHMENT A-2..... 11

ATTACHMENT A-3..... 12

MARGINAL FREQUENCY REPORT..... 13

Key Findings

The February 2017 Franklin & Marshall College Poll finds that Pennsylvania voters continue to be dissatisfied with the direction of the state, the country, and with politics in general. Most registered voters believe the state (52%) and country (66%) are “on the wrong track.” Many registered voters also believe that “government” and “politicians” are the most important problems facing both the state and the nation at the moment. Consequently, registered voters’ job approval ratings for Governor Wolf (38%), Senator Casey (37%), and President Trump (32%) are relatively low, although Governor Wolf’s ratings are better than they were one year ago during the latter stages of the state budget impasse. President Trump’s ratings are strong among Republicans and even stronger among self-described conservatives and, despite his relatively low ratings, a majority (51%) of all registered voters is confident in his ability to improve the economy. An equal share of registered voters in the state believes the media treats President Trump “very unfairly” (32%) as believe it treats him “very fairly” (32%).

Governor Wolf: State Issues, Job Performance and the State Budget

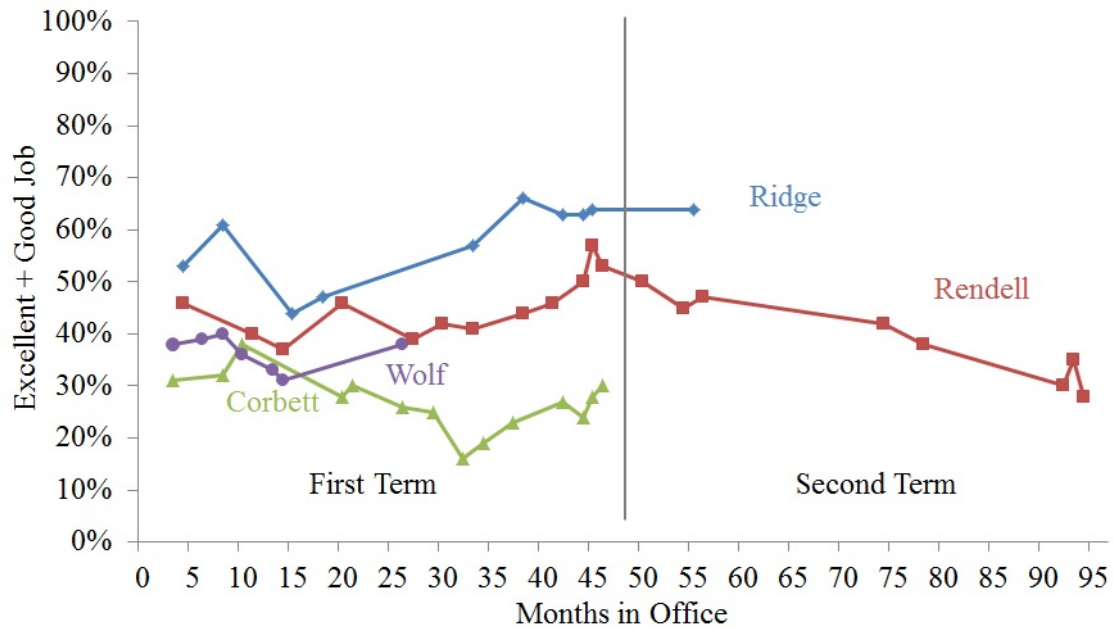
One in two (52%) registered voters believes the state is “on the wrong track” and nearly equal numbers of respondents say their families are economically “worse off” (19%) as say their families are economically “better off” (21%) compared to one year ago. These patterns did not differ by political party affiliation or political ideology. Pennsylvania’s registered voters continue to believe that government and politicians (24%) are the state’s most important problem, although more than twice as many Pennsylvania registered voters provided this response in March, 2016 (45%).

Two in five (38%) registered voters in Pennsylvania believe Governor Wolf is doing an “excellent” or “good” job as governor. Half (52%) of registered Democrats, two in five (37%) independents, and one in five (20%) Republicans provides positive ratings of the Governor’s job performance. Figure 1 compares Governor Wolf’s job approval ratings to his recent predecessors. Wolf’s job performance ratings fall between Governor Rendell’s and Governor Corbett’s at similar points during their terms in office.

Figure 1:

Comparison of Governors' Job Performance Ratings, Pennsylvania voters February 2017

How would you rate the way that [fill Governor] is handling his job as Governor? Would you say he is doing... an excellent job, a good job, only a fair job, or a poor job as Governor?



Source: Survey conducted February 15 – 19, 2017



A majority (54%) of registered voters believes the financial condition of state government is “bad” or “very bad,” although about one in five (23%) aren’t sure. A majority (52%) of respondents are confident in the Governor’s ability to handle the state’s budget problems. Three in five (61%) registered voters favor the governor’s proposal to raise the state minimum wage to \$12 per hour. Support for a minimum wage increase is highest among Democrats (83%) and independents (61%) and lowest among Republicans (33%).

President Trump: Job Performance and National Issues

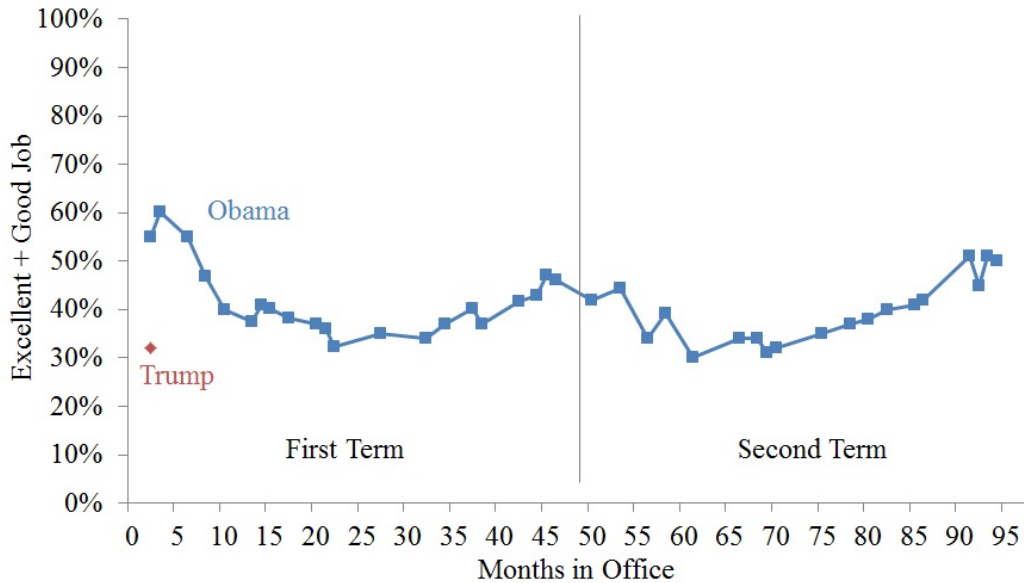
Two in three (66%) registered voters believe that the United States is “on the wrong track” and two in five (41%) believe that “government” and “politicians” are the most important problem facing the country—including in this number is the one in three (33%) Democrats and one in five (17%) independents who specifically mentions President Trump as the problem.

One in three (32%) registered voters in Pennsylvania believes President Trump is doing an “excellent” or “good” job as president. Figure 2 compares President Trump’s job rating to President Obama’s job ratings; President Trump’s current rating is below President Obama’s initial rating in Pennsylvania in early 2009. A majority of Republicans (61%) rate the President’s performance positively, while fewer Democrats (9%) or Independents (35%) do so. Conservatives (73%) are more likely than moderates (20%) or liberals (4%) to give the President positive approval ratings. Despite low relative job performance ratings, a majority of Pennsylvania registered voters are confident in the President’s ability to handle the economy (51%). Pennsylvania voters are less confident in his ability to handle immigration issues (41%) and foreign affairs (38%).

Figure 2:

Comparison of Presidents' Job Performance Ratings, Pennsylvania voters February 2017

How would you rate the way that [fill President] is handling his job as President? Would you say he is doing... an excellent job, a good job, only a fair job, or a poor job as President?



Source: Survey conducted February 15 – 19, 2017



Pennsylvania's registered voters do not believe that President Trump is particularly honest; respondents give him an average honesty rating of 4.5 using a one to ten scale where one means dishonest and ten means honest. Conservatives (mean = 7.6) rate him as more honest than moderates (mean = 3.8) or liberals (mean = 1.9). On the other hand, equal proportions of registered voters say that the media treats the President "very unfairly" (32%) as say the media treats him "very fairly" (32%). Perceptions of the media's treatment of President Trump differ by a respondent's primary source of news: cable news viewers (57%), social media users (60%), and radio listeners (52%) are more likely than network news viewers (41%) or internet users (35%) to believe the media treats him "unfairly."

More respondents believe that the passage of the Affordable Care Act in 2010 made the health care system better (49%) than made it worse (41%) for most Americans. On the other hand, more respondents say they are “worse off” personally (28%) than say they are “better off” personally (19%) as a result of the law’s passage. Only one in four (29%) registered Pennsylvania voters believes that the law should be repealed entirely; most (60%) believe the law should have a few changes made to improve it. Responses to these questions are strongly associated with political party affiliation and political ideology, as one might expect. For instance, half (54%) of Republicans believe the law should be repealed in its entirety, but only one third (34%) of independents and less than one in ten (7%) Democrats believe that. Similarly, two thirds (64%) of conservatives believe the law should be repealed entirely, while few liberals (3%) or moderates (19%) feel this way.

Methodology

The survey findings presented in this release are based on the results of interviews conducted February 15 – 19, 2017. The interviews were conducted at the Center for Opinion Research at Franklin & Marshall College on behalf of the Center for Politics and Public Affairs. The poll was designed and administered by the staff of the Center for Opinion Research. The data included in this release represent the responses of 816 Pennsylvania registered voters, including 391 Democrats, 310 Republicans, and 114 Independents. The sample of registered voters was obtained from Labels & Lists. All sampled respondents were notified by letter about the survey. Interviews were completed over the phone and on-line depending on each respondent's preference. Survey results were weighted (age, gender, region, education, ideology, and party registration) using an iterative weighting algorithm to reflect the known distribution of those characteristics as reported by the Pennsylvania Department of State and Pennsylvania exit polls.

The sample error for this survey is +/- 5.0 percentage points when the design effects from weighting are considered. In addition to sampling error, this poll is also subject to other sources of non-sampling error. Generally speaking, two sources of error concern researchers most. Non-response bias is created when selected participants either choose not to participate in the survey or are unavailable for interviewing. Response errors are the product of the question and answer process. Surveys that rely on self-reported behaviors and attitudes are susceptible to biases related to the way respondents process and respond to survey questions.

Attachment A-1

Presidential Job Performance: Registered Voters, Pennsylvania, February 2017

How would you rate the way that Donald Trump is handling his job as President? Would you say he is going an excellent job, a good job, only a fair job, or a poor job as President?

	Excellent/Good	Fair/Poor	Do Not Know
Party*			
Republican	61%	38%	1%
Democrat	9%	90%	1%
Independent or something else	35%	64%	1%
Ideology*			
Liberal	4%	96%	0%
Moderate	20%	79%	1%
Conservative	73%	25%	3%
Gender*			
Male	38%	62%	0%
Female	27%	71%	2%
Age*			
Under 35	22%	76%	1%
35-54	36%	63%	0%
Over 55	35%	63%	2%
Education*			
HS or less	51%	47%	1%
Some college	33%	65%	2%
College degree	23%	76%	0%
Income			
Under 35	30%	68%	1%
35-75	33%	65%	2%
Over 75	29%	71%	0%
Race*			
White	34%	65%	1%
Nonwhite	5%	92%	3%
Marital Status**			
Single, Never Married	24%	74%	2%
Married	36%	63%	1%
Not currently married	32%	67%	1%
Religious Affiliation*			
Protestant	38%	60%	2%
Catholic	39%	61%	0%
Other, unaffiliated	23%	75%	1%
Born Again Christian or Fundamentalist*			
Yes	46%	51%	2%
No	27%	72%	1%
Gun Owner*			
Yes	51%	48%	1%
No	21%	77%	1%
Region*			
Philadelphia	10%	88%	2%
Northeast	38%	59%	3%
Allegheny	25%	75%	0%
Southwest	40%	60%	0%
Northwest	37%	61%	2%
Central	37%	61%	2%
Southeast	31%	69%	0%
Employment			
Fulltime	33%	66%	1%
Other	28%	69%	3%
Retired	36%	64%	1%

* p<0.01 ** p<0.05

Attachment A-2

Gubernatorial Job Performance: Registered Voters, Pennsylvania, February 2017

How would you rate the way that Tom Wolf is handling his job as Governor? Would you say he is going an excellent job, a good job, only a fair job, or a poor job as Governor?

	Excellent/Good	Fair/Poor	Do Not Know
Party*			
Republican	20%	71%	10%
Democrat	53%	39%	8%
Independent or something else	38%	57%	6%
Ideology*			
Liberal	60%	33%	7%
Moderate	40%	53%	7%
Conservative	16%	72%	12%
Gender**			
Male	35%	58%	7%
Female	41%	49%	10%
Age*			
Under 35	42%	42%	15%
35-54	32%	59%	9%
Over 55	40%	57%	3%
Education*			
HS or less	29%	67%	4%
Some college	32%	57%	11%
College degree	46%	46%	8%
Income*			
Under 35	36%	54%	10%
35-75	42%	55%	2%
Over 75	39%	50%	11%
Race			
White	39%	53%	8%
Nonwhite	36%	55%	9%
Marital Status			
Single, Never Married	39%	49%	12%
Married	37%	55%	8%
Not currently married	41%	55%	4%
Religious Affiliation*			
Protestant	32%	61%	7%
Catholic	38%	57%	5%
Other, unaffiliated	43%	46%	11%
Born Again Christian or Fundamentalist**			
Yes	29%	59%	12%
No	41%	52%	7%
Gun Owner*			
Yes	25%	65%	9%
No	45%	47%	8%
Region**			
Philadelphia	42%	48%	10%
Northeast	44%	47%	8%
Allegheny	41%	55%	4%
Southwest	27%	60%	13%
Northwest	45%	46%	8%
Central	29%	63%	8%
Southeast	44%	48%	8%
Employment*			
Fulltime	37%	55%	8%
Other	37%	48%	14%
Retired	40%	57%	3%

Attachment A-3

Senatorial Job Performance: Registered Voters, Pennsylvania, February 2017

How would you rate the way that Bob Casey, Jr. is handling his job as Senator? Would you say he is going an excellent job, a good job, only a fair job, or a poor job as Senator?

	Excellent/Good	Fair/Poor	Do Not Know
Party*			
Republican	19%	61%	20%
Democrat	50%	37%	13%
Independent or something else	37%	33%	30%
Ideology*			
Liberal	55%	31%	14%
Moderate	39%	45%	16%
Conservative	17%	59%	24%
Gender			
Male	31%	51%	18%
Female	42%	40%	18%
Age**			
Under 35	35%	43%	23%
35-54	32%	48%	19%
Over 55	42%	44%	14%
Education*			
HS or less	32%	53%	15%
Some college	27%	47%	26%
College degree	45%	41%	14%
Income			
Under 35	36%	44%	20%
35-75	41%	47%	12%
Over 75	38%	45%	17%
Race*			
White	38%	43%	19%
Nonwhite	32%	67%	1%
Marital Status			
Single, Never Married	36%	45%	19%
Married	37%	46%	17%
Not currently married	36%	44%	20%
Religious Affiliation			
Protestant	32%	51%	18%
Catholic	41%	44%	16%
Other, unaffiliated	38%	43%	19%
Born Again Christian or Fundamentalist*			
Yes	25%	50%	25%
No	40%	44%	16%
Gun Owner*			
Yes	23%	57%	20%
No	45%	39%	17%
Region*			
Philadelphia	50%	44%	6%
Northeast	38%	49%	12%
Allegheny	30%	54%	15%
Southwest	32%	53%	15%
Northwest	39%	36%	25%
Central	25%	48%	27%
Southeast	47%	37%	15%
Employment			
Fulltime	34%	47%	18%
Other	35%	43%	22%
Retired	43%	44%	13%

* p<0.01 ** p<0.05

Marginal Frequency Report

Responses may not total 100% due to rounding.

REG. Some people are registered to vote, and many others are not. Are you CURRENTLY REGISTERED to vote at your present address?

100%	Yes
0%	No

RegPARTY. Are you currently registered as a Republican, a Democrat, an Independent, or as something else?

38%	Republican
48%	Democrat
12%	Independent
2%	Something else

Please let me know your opinion of some people involved in politics today. Is your opinion of [FILL name] favorable, unfavorable, undecided, or haven't you heard enough about [FILL name] to have an opinion? (rotated)

	Strongly favorable	Somewhat favorable	Somewhat unfavorable	Strongly unfavorable	Undecided	Don't know
Donald Trump						
Feb 2017	23%	14%	6%	51%	6%	1%
Oct 2016	23%	12%	6%	56%	3%	1%
Sep 2016	20%	12%	6%	54%	6%	1%
Aug 2016	23%	14%	7%	51%	5%	1%
Jul 2016	20%	13%	5%	57%	5%	0%
Mar 2016	13%	14%	9%	56%	7%	1%
Feb 2016	12%	15%	11%	51%	10%	1%
TOM WOLF						
Feb 2017	12%	29%	15%	19%	13%	11%
Feb 2016	14%	25%	16%	27%	9%	9%
Oct 2015	15%	23%	13%	20%	16%	13%
Aug 2015	22%	21%	9%	17%	18%	13%
Jun 2015	21%	23%	10%	17%	19%	11%
Mar 2015	22%	18%	11%	16%	22%	11%
Oct 2014	20%	20%	7%	18%	18%	16%
Sept 2014	19%	21%	9%	13%	18%	21%
Aug 2014	18%	19%	7%	10%	22%	24%
Jun 2014	15%	20%	5%	7%	20%	32%
BOB CASEY						
Feb 2017	16%	25%	13%	12%	14%	21%
Oct 2013	12%	23%	10%	13%	16%	27%
Aug 2013	12%	22%	11%	13%	17%	26%
May 2013	17%	26%	9%	13%	17%	18%
Feb 2013	13%	27%	11%	13%	16%	21%
Oct 2012	16%	20%	12%	19%	14%	19%
Sep 2012	14%	23%	13%	16%	13%	22%
Aug 2012	11%	25%	12%	10%	16%	27%
June 2012	14%	24%	10%	8%	14%	29%
Jan 2012	9%	20%	9%	8%	18%	35%
Mar 2011	6%	19%	11%	8%	19%	37%
May 2010	10%	23%	9%	11%	16%	31%
Mar 2010	9%	24%	10%	11%	17%	29%
Feb 2010	13%	20%	9%	9%	15%	34%
Jan 2010	9%	23%	11%	9%	17%	31%
Oct 2009	11%	21%	9%	12%	15%	32%
Aug 2009	17%	24%	10%	8%	17%	24%
Jun 2009	11%	21%	12%	5%	17%	34%
Feb 2009	11%	19%	9%	8%	21%	32%

RightDir. All in all, do you think things in Pennsylvania are generally headed in the right direction, or do you feel that things are off on the wrong track?

	Headed in Right Direction	Off on the Wrong Track	Don't know
Feb 2017	35%	52%	13%
Mar 2016	24%	66%	10%
Feb 2016	21%	67%	12%
Jan 2016	21%	67%	12%
Oct 2015	26%	62%	12%
Aug 2015	32%	54%	13%
Jun 2015	36%	47%	17%
Mar 2015	39%	47%	15%
Oct 2014	28%	61%	11%
Sept 2014	29%	60%	11%
Aug 2014	27%	61%	13%
Jun 2014	30%	59%	11%
Jan 2014	25%	62%	13%
Oct 2013	25%	61%	13%
Aug 2013	26%	62%	12%
May 2013	28%	58%	13%
Aug 2012	31%	56%	13%
June 2012	30%	57%	13%
Feb 2012	31%	56%	13%
Jan 2012	38%	47%	15%
Oct 2011	38%	49%	13%
Aug 2011	34%	53%	13%
Mar 2011	37%	53%	10%
Oct 2010	27%	64%	9%
Sep 2010	31%	59%	10%
Aug 2010	30%	58%	12%
May 2010	35%	55%	10%
Mar 2010	32%	58%	10%
Feb 2010	37%	50%	13%
Jan 2010	39%	53%	8%

FinToday. We are interested in how people are getting along financially these days. Would you say that YOU and YOUR FAMILY are better off, worse off, or about the same financially as you were a year ago?

	Feb 2017	Oct 2016	Sep 2016	Aug 2016	Jul 2016
Better off	21%	22%	23%	24%	24%
Worse off	19%	24%	21%	24%	22%
About the same	60%	53%	56%	52%	54%
Don't know	1%	1%	1%	1%	1%

FinFut. Now looking AHEAD, do you think that A YEAR FROM NOW, YOU and YOUR FAMILY will be better off financially than you are now, worse off, or about the same as you are now?

	Feb 2017	Oct 2016	Sep 2016	Aug 2016	Jul 2016
Better off	28%	25%	25%	25%	24%
Worse off	15%	7%	7%	8%	7%
About the same	49%	49%	52%	53%	55%
Don't know	8%	19%	16%	14%	14%

MIP_PA. What do you think is the MOST IMPORTANT problem facing PENNSYLVANIA TODAY?

Oct 2013	Jan 2014	Jun 2014	Aug 2014	Sept 2014	Oct 2014	Mar 2015	Jun 2015	Aug 2015	Oct 2015	Jan 2016	Feb 2016	Mar 2016	Feb 2017	
17%	11%	15%	14%	13%	14%	16%	17%	22%	39%	38%	47%	45%	24%	Government, politicians
21%	19%	23%	29%	30%	25%	19%	18%	21%	16%	18%	12%	13%	16%	Education, school
17%	26%	21%	16%	16%	20%	15%	18%	15%	12%	8%	9%	13%	12%	Unemployment, personal finances
8%	11%	9%	10%	11%	9%	17%	12%	12%	9%	9%	10%	7%	11%	Taxes
2%	1%	1%	2%	1%	2%	3%	2%	3%	2%	3%	2%	1%	5%	Crime, drugs, violence, guns
4%	3%	5%	3%	2%	2%	4%	5%	3%	2%	2%	1%	2%	4%	Roads, infrastructure, transportation
8%	4%	3%	2%	2%	2%	4%	1%	1%	2%	2%	1%	2%	4%	Healthcare, insurance
5%	5%	5%	3%	4%	5%	6%	7%	4%	4%	4%	4%	5%	3%	Economy, finances
4%	2%	5%	5%	3%	5%	3%	6%	5%	2%	2%	2%	2%	3%	Energy issues, gas prices
1%	1%	1%	0%	1%	0%	0%	1%	1%	1%	0%	1%	1%	2%	Retaining, attracting businesses
1%	1%	1%	1%	0%	1%	1%	1%	1%	1%	1%	1%	1%	2%	Environment
1%	1%	1%	0%	0%	1%	1%	1%	1%	1%	1%	0%	1%	2%	Social issues
0%	2%	1%	1%	1%	1%	2%	1%	2%	0%	1%	1%	1%	1%	Values, morals
2%	1%	1%	1%	2%	1%	1%	0%	1%	1%	0%	0%	1%	1%	Welfare
0%	0%	0%	1%	0%	1%	1%	1%	0%	0%	0%	1%	0%	1%	Immigration
2%	1%	1%	0%	1%	0%	1%	0%	0%	0%	0%	0%	0%	1%	Civil liberties
0%	0%	0%	1%	0%	0%	0%	0%	0%	0%	0%	0%	0%	1%	Justice system, Lawyers
0%	0%	0%	0%	0%	0%	0%	0%	0%	0%	0%	0%	0%	1%	Racism
1%	1%	1%	1%	4%	1%	1%	6%	1%	1%	1%	0%	0%	0%	Senior issues, social security
0%	0%	0%	0%	1%	0%	0%	0%	0%	0%	0%	0%	0%	0%	Foreign policy, terrorism, war
0%	0%	0%	1%	0%	0%	0%	0%	0%	0%	0%	0%	0%	0%	Personal illness, health problems, family issues
3%	2%	2%	4%	3%	2%	2%	3%	2%	3%	4%	4%	3%	4%	Other
7%	8%	7%	8%	6%	8%	5%	0%	6%	6%	8%	5%	3%	6%	Don't know

Rate_Gov. How would you rate the way that Tom Wolf is handling his job as Governor? Would you say he is doing an...

	Excellent job	Good job	Only a fair job	Poor job	Don't know
Feb 2017	4%	34%	35%	19%	8%
Feb 2016	4%	27%	32%	29%	7%
Jan 2016	5%	28%	36%	26%	6%
Oct 2015	6%	30%	37%	21%	6%
Aug 2015	7%	32%	34%	17%	10%
Jun 2015	8%	31%	34%	16%	13%
Mar 2015	7%	31%	29%	14%	19%

FinPA. The governor recently announced his proposed state budget for the coming fiscal year. How would you describe the financial condition of state government today?

	Very Good	Good	Bad	Very Bad	Don't know
Feb 2017	1%	23%	42%	12%	23%
Feb 2012	1%	23%	44%	24%	9%
Mar 2011	1%	14%	47%	31%	7%
Feb 2009	0%	23%	46%	20%	11%

ComPA. Do you think Pennsylvania's financial condition is better than, worse than, or about the same as other states?

	Better off	Worse off	About the same	Don't know
Feb 2017	14%	30%	38%	18%
Feb 2012	19%	13%	54%	14%
Mar 2011	17%	20%	51%	12%
Feb 2009	24%	15%	48%	13%

ConGov. How confident are you in Governor Wolf's ability to handle the state's budget problems? Are you...very confident, somewhat confident, not very confident, or not at all confident?

- 6% Very confident
- 46% Somewhat Confident
- 27% Not Very Confident
- 14% Not at all Confident
- 7% Do not know

MinWage. During his budget address, Governor Wolf proposed raising the state's minimum wage. Do you favor or oppose raising the state's minimum wage from \$7.25 to \$12.00 per hour?

- 39% Strongly Favor
- 22% Somewhat Favor
- 15% Somewhat Oppose
- 22% Strongly Oppose
- 2% Do not know

RateSenC. How would you rate the way that Bob Casey, JR. is handling his job as U.S. SENATOR?
 Would you say he is doing... an excellent job, a good job, only a fair job, or a poor job as U.S. Senator?

	Excellent Job	Good Job	Only a Fair Job	Poor Job	Don't Know
Feb 2017	10%	27%	31%	14%	18%
Oct 2013	5%	25%	34%	17%	20%
Aug 2013	5%	23%	39%	15%	19%
Oct 2012	6%	31%	33%	18%	12%
Sep 2012	7%	31%	32%	15%	16%
Aug 2012	4%	32%	37%	11%	16%
June 2012	5%	33%	32%	8%	21%
Feb 2012	4%	26%	43%	12%	15%
Jan 2012	4%	31%	36%	11%	19%
Oct 2011	5%	33%	38%	9%	16%
Aug 2011	5%	27%	43%	9%	16%
Mar 2011	3%	26%	39%	9%	23%
Feb 2009	7%	31%	32%	10%	20%
Aug 2007	5%	37%	36%	7%	15%

UStrk. All in all, do you think things in the UNITED STATES are generally headed in the RIGHT DIRECTION, or do you feel that things are off on the WRONG TRACK?

	Feb 2017	Oct 2016	Sep 2016	Aug 2016	Jul 2016
Right direction	29%	35%	36%	32%	38%
Wrong track	66%	58%	57%	61%	57%
Don't know	6%	7%	7%	7%	5%

MIP_US. What do you think is the MOST IMPORTANT problem facing the UNITED STATES TODAY?

- 41% Government, politicians
- 10% Immigration
- 7% Foreign policy, terrorism, war
- 6% Unemployment, personal finances
- 5% Economy, finances
- 4% Healthcare, insurance
- 4% Global events
- 3% Racism
- 2% Education, school
- 2% Environment
- 2% Civil liberties
- 1% Taxes
- 1% Crime, drugs, violence, guns
- 1% Social issues
- 1% Welfare
- 8% Other
- 3% Don't know

RatePres. How would you rate the way that Donald Trump is handling his job as president? Would you say he is doing... an excellent job, a good job, only a fair job, or a poor job as President?

	Excellent Job	Good Job	Only a Fair Job	Poor Job	Don't Know
Feb 2017	13%	19%	13%	54%	1%

ConfPres. How confident are you in President Trump's ability to handle the economy? Are you... very confident, somewhat confident, not very confident, or not at all confident?

	Feb 2017	Feb 2009 (Obama)
Very confident	28%	27%
Somewhat confident	23%	43%
Not very confident	12%	14%
Not at all confident	36%	15%
Don't know	1%	1%

ConfPresFA. How confident are you in President Trump's ability to handle America's relationships with other countries? Are you... very confident, somewhat confident, not very confident, or not at all confident?

15% Very confident
 23% Somewhat Confident
 13% Not Very Confident
 47% Nat at all Confident
 1% Do not know

ConfPresIm. How confident are you in President Trump's ability to handle immigration? Are you... very confident, somewhat confident, not very confident, or not at all confident?

24% Very confident
 17% Somewhat Confident
 11% Not Very Confident
 46% Nat at all Confident
 2% Do not know

PresHon On a scale from one to ten where one means dishonest and ten means honest, where would you place President Trump's honesty?

n	Mean	St.Dev.
807	4.45	3.39

PrimNews What is your PRIMARY source for news?

	Feb 2017	Oct 2016	Sep 2016	Aug 2016	Jul 2016
Cable television, such as Fox, CNN, or MSNBC	31%	29%	30%	28%	27%
Internet (other than social media)*	28%	33%	32%	28%	35%
Network television, such as ABC, CBS, or NBC	18%	19%	20%	21%	20%
Daily newspaper (such as the Inquirer or Daily News)	8%	7%	8%	11%	10%
Radio	8%	7%	7%	6%	6%
Social media (Twitter, Facebook, SnapChat, Instagram)	3%	--	--	--	--
Neighborhood newspaper	1%	2%	2%	2%	2%
Other	3%	4%	2%	3%	1%
Do not know	1%	0%	1%	1%	0%

*updated to exclude social media in February 2017

CabNet Which cable network do you rely on the most?

n=252

- 44% Fox News Channel
- 29% CNN
- 15% MSNBC
- 1% None, nothing
- 1% Fox Business Network
- 10% Other
- 2% Do not know

MedFairPres Do you think that the media treats President Trump fairly or unfairly? Is that very or somewhat?

- 32% Very fairly
- 21% Somewhat fairly
- 13% Somewhat unfairly
- 32% Very unfairly
- 3% Do not know

HC_USA Do you think the country's healthcare system works pretty well and needs only minor changes to work better, or do you think the country's healthcare system has so many problems that it should be completely rebuilt?

- 43% Works pretty well and needs only minor changes
- 53% Has so many problems that it should be completely rebuilt
- 3% Do not know

HCRL1 Do you think that the passage of the healthcare reform law in 2010, known as the Affordable Care Act or Obamacare, has made the healthcare system better or worse for most Americans?

- 49% Better
- 41% Worse
- 6% About the same
- 4% Do not know

HCRL4 What effect did the passage of the Affordable Care Act have on you personally? Would you say you and your family are better off, worse off, or about the same as a result of health care reform?

19%	Better off
28%	Worse off
51%	About the same
2%	Do not know

HCRL7 Which comes closest to how you feel about the Affordable Care Act? The law should... (rotated)

9%	Be kept in place mostly as is
60%	Have a few changes to make it work better
29%	Be repealed entirely.
3%	Do not know

DEMO I now have a final few questions for statistical purposes only.

CNTY. Region of state (What is the name of the county you live in?)

26%	Central
24%	Southeast
12%	Northeast
10%	Allegheny
9%	Southwest
9%	Philadelphia
8%	Northwest

AGE. What was your age on your last birthday?

8%	18-24
18%	25-34
14%	35-44
18%	45-54
15%	55-64
26%	65 and older

EDUC. What was the highest grade level of schooling you have completed?

1%	Non high school graduate
20%	High school graduate or GED
18%	Some college
13%	Associate's degree or technical degree
26%	Bachelor's degree
22%	Post graduate degree

MAR. What is your CURRENT marital status...are you single, married, separated, divorced, or a widower?

- 60% Married
- 25% Single, Never Married
- 9% Divorced
- 6% Widow or widower

IDEO. Politically speaking, do you consider yourself to be a liberal, a moderate, or a conservative?

	Liberal	Moderate	Conservative	Don't know
Feb 2017	27%	42%	31%	0%
Oct 2016	33%	29%	34%	4%
Sep 2016	31%	28%	38%	4%
Aug 2016	31%	32%	33%	4%
Jul 2016	33%	30%	33%	4%
Mar 2016	24%	35%	37%	3%
Feb 2016	27%	33%	37%	3%
Jan 2016	22%	39%	36%	4%
Oct 2015	22%	38%	37%	4%
Aug 2015	21%	36%	40%	3%
Jun 2015	23%	35%	39%	4%
Oct 2014	23%	37%	36%	3%
Sept 2014	22%	36%	38%	5%
Aug 2014	20%	39%	36%	5%
Jun 2014	26%	36%	34%	5%
Jan 2014	24%	43%	28%	5%
Oct 2013	24%	39%	31%	6%
Aug 2013	22%	42%	33%	3%
May 2013	24%	39%	31%	6%
Feb 2013	26%	36%	35%	3%
Oct 2012	22%	39%	35%	5%
Sep 2012	26%	34%	35%	5%
Aug 2012	21%	40%	36%	4%
June 2012	25%	34%	36%	5%
Feb 2012	17%	39%	40%	4%
Jan 2011	21%	39%	36%	4%
Oct 2011	20%	39%	33%	8%
Aug 2011	24%	32%	37%	7%
Mar 2011	16%	33%	41%	10%
Oct 2010	16%	37%	39%	8%
Sep 2010	15%	34%	40%	10%
Aug 2010	19%	32%	40%	9%
May 2010	19%	32%	40%	9%
Mar 2010	17%	35%	40%	8%
Feb 2010	21%	33%	37%	9%
Jan 2010	19%	30%	42%	9%

PARTY. Regardless of how you are registered... in politics, as of today, do you think of yourself as a Republican, a Democrat, or an Independent?

19%	Strong Republican
12%	Republican
9%	Lean Republican
6%	Independent
16%	Lean Democrat
12%	Democrat
25%	Strong Democrat
1%	Don't know

GenVote. Thinking about the last few state and national elections, which best describes how you voted:

2%	Did not vote in last few
20%	Straight Democrat
23%	Mostly Democrat
8%	A few more Democrats than Republicans
8%	About equally for both parties
7%	A few more Republicans than Democrats
19%	Mostly Republican
12%	Straight republican

GUN. Are you a gun owner?

33%	Yes
67%	No

GUN2. Generally speaking, do you favor or oppose creating more laws that regulate gun ownership?

	Strongly favor	Somewhat favor	Somewhat oppose	Strongly oppose	Don't know
Feb 2017	42%	19%	14%	23%	2%
Oct 2016	38%	27%	12%	21%	4%
Sep 2016	44%	21%	10%	23%	3%
Aug 2016	38%	16%	16%	26%	3%
Jul 2016	43%	18%	10%	25%	4%
Mar 2016	42%	17%	10%	28%	3%
Feb 2016	40%	16%	13%	29%	3%
Jan 2016	40%	15%	13%	29%	3%
Oct 2015	43%	13%	10%	31%	4%
Aug 2015	40%	14%	10%	32%	5%
Jun 2015	38%	13%	12%	33%	5%
Oct 2014	42%	12%	8%	37%	2%
Sept 2014	39%	14%	10%	32%	5%
Aug 2014	39%	14%	10%	31%	6%
Jun 2014	43%	12%	9%	31%	5%
Jan 2014	42%	12%	9%	32%	6%
Oct 2013	46%	16%	9%	24%	5%
Aug 2013	39%	12%	13%	33%	4%
May 2013	43%	14%	11%	30%	3%
Feb 2013*	43%	15%	10%	28%	4%
Aug 2007	40%	20%	14%	23%	3%
Jun 2007	39%	15%	12%	31%	3%
Feb 2007	39%	17%	15%	26%	3%

LABR. Are you or is any member of your household a member of a LABOR UNION?

23% Yes
 76% No
 1% Do not know

VET. Are you a military veteran?

12% Yes
 89% No

Hisp. Are you Hispanic or Latino, or not?

3% Yes
 96% No
 1% Do not know

RACE. Which of the following categories best describes your racial background?

93% White
8% Non-white

REL. Do you consider yourself to be Protestant, Catholic, some other religion, or not affiliated with any religion?

31% Protestant
26% Catholic
15% Some other religion
28% Not affiliated with any religion

BAC. Do you consider yourself to be a born-again Christian or fundamentalist, or not?

20% Yes
77% No
3% Don't know

WORK. Are you currently working fulltime, part-time, going to school, keeping house or something else?

54% Full-time
22% Retired
12% Part-time
3% Something else
4% Disabled
2% Unemployed
2% Going to school

INCOME. And, just for statistical purposes, we need to know if your total family income is above or below \$50,000 per year?

10% Under \$25,000
10% \$25-\$35,000
11% \$35-50,000
18% \$50-75,000
18% \$75-100,000
28% Over \$100,000
5% Don't know

DONE. Sex of respondent:

48% Male
52% Female