

FRANKLIN & MARSHALL

February 2016 Franklin & Marshall College Poll

SUMMARY OF FINDINGS

**Prepared by:
Center for Opinion Research
Floyd Institute for Public Policy
Franklin & Marshall College**

February 25, 2016

Table of Contents

KEY FINDINGS.....	3
<i>PRESIDENTIAL PRIMARY RACES.....</i>	<i>4</i>
<i>TOM WOLF JOB PERFORMANCE.....</i>	<i>8</i>
<i>PRESIDENT OBAMA’S JOB PERFORMANCE</i>	<i>9</i>
ATTACHMENT A.....	11
ATTACHMENT B.....	12
ATTACHMENT C.....	13
ATTACHMENT D.....	14
MARGINAL FREQUENCY REPORT.....	15

Key Findings

The February 2016 Franklin & Marshall College Poll of Pennsylvania registered voters shows continuing dissatisfaction with the direction of the state and with the state's politicians. Two in three (67%) registered voters believe the state is "on the wrong track," up from 62% in October, and nearly half (47%) say that government and politicians are the biggest problems facing the state; concerns primarily related to the state budget impasse.

The presidential primary race in Pennsylvania shows some stability for the Democrats, with Hillary Clinton holding a sizable lead over Bernie Sanders, 48% to 27%, which is comparable to the lead she held in January. Pennsylvanians' preferences in the Republican presidential race continue to change. Donald Trump (22%) leads, as he has since October, but the order of preference for his challengers continues shuffling. Marco Rubio (16%), John Kasich (15%), and Ted Cruz (12%) are all in a close contest for second. The Republican race is closer among likely primary voters, with the top four candidates separated by only five points.

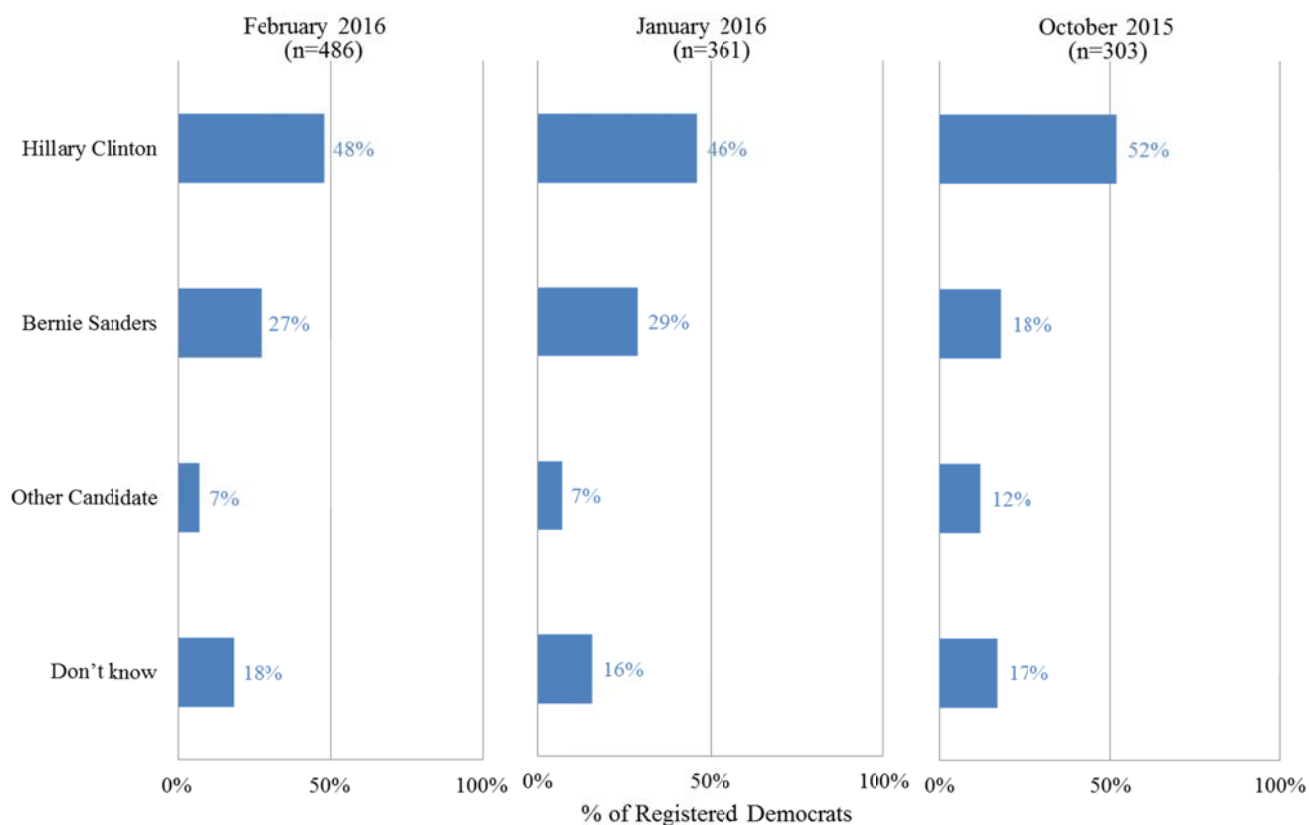
Presidential Primary Races

Democrats

Hillary Clinton holds a sizable lead in the presidential race among registered Democrats in Pennsylvania. Secretary Clinton leads her closest rival, Senator Bernie Sanders, 48% to 27%, with 18% reporting they are still undecided. Secretary Clinton's lead is consistent with results from our January survey, although she led Senator Sanders by a larger margin in October (see Figure 1). Secretary Clinton's lead is similar among likely voters, 51% to 29%.

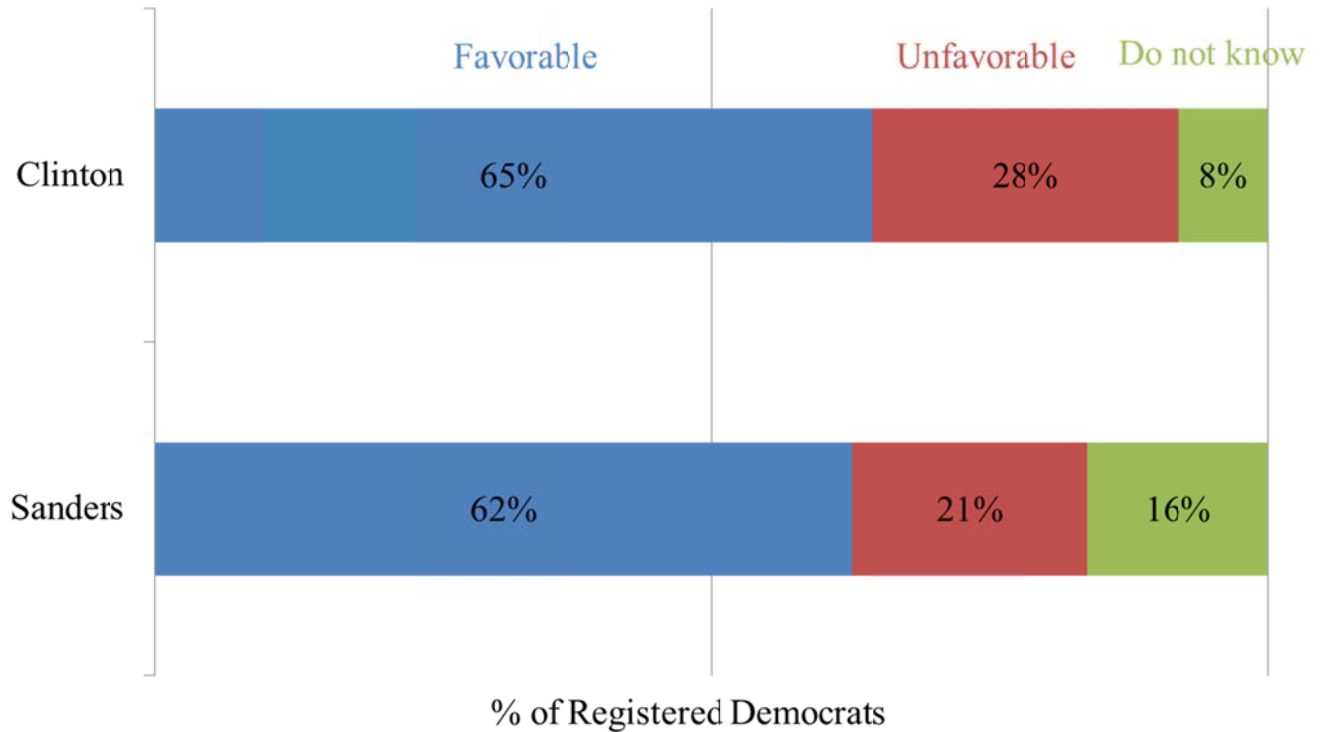
Figure 1: Democratic Presidential Primary, Pennsylvania Voters February 2016

If the Democratic primary election for president was being held today would you vote for...?



Both Democratic candidates are viewed favorably by Democratic voters in the state (see Figure 2). Nearly two in five registered Democrats say they have a favorable opinion of both Secretary Clinton (65% favorable and 28% unfavorable) and Senator Sanders (62% favorable and 21% unfavorable).

Figure 2: Favorability Ratings of Democratic Presidential Candidates among Registered Democrats, Pennsylvania Voters February 2016

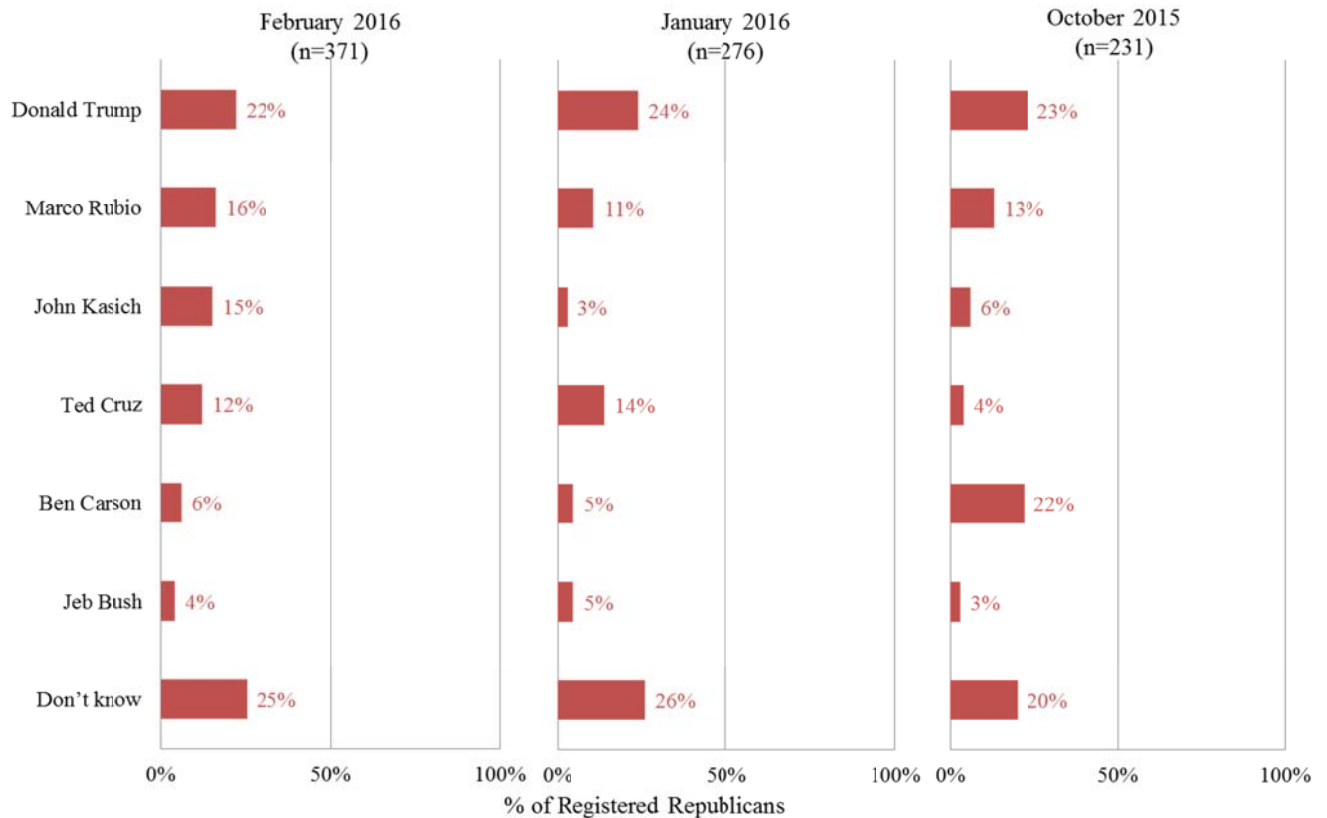


Republicans

Pennsylvanians' preferences in the Republican presidential race continue to change. Donald Trump (22%) leads in the state, while the order of preference for his challengers continues shuffling. Marco Rubio (16%), John Kasich (15%), and Ted Cruz (12%) are in a close contest for second, while one in four (25%) remains undecided about their preference. Governor Kasich's support has risen substantially since January (see Figure 3). The race is much tighter among likely Republican voters, with the top four candidates separated by only about five points (Trump 21%, Rubio 18%, Kasich 16%, Cruz 16%).

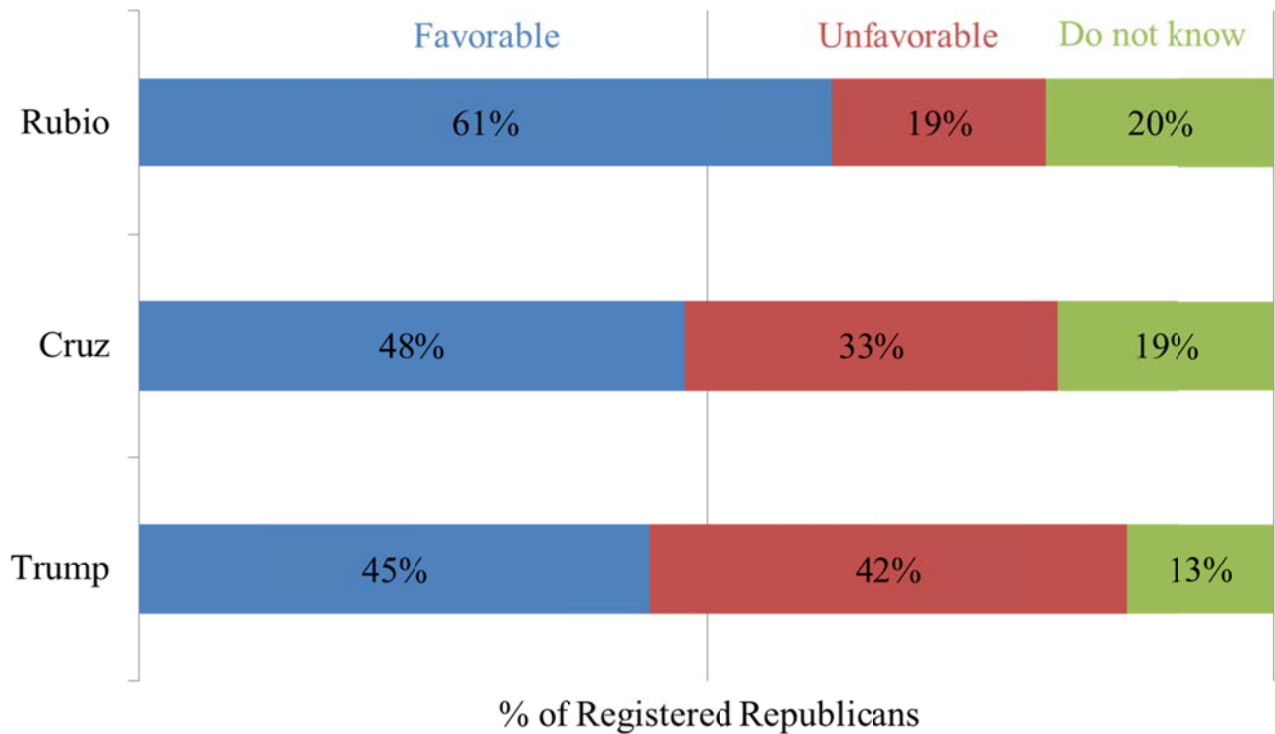
Figure 3: Republican Presidential Primary, Pennsylvania Voters February 2016

If the Republican primary election for president was being held today would you vote for...?



Registered Republicans do not express positive feelings about all of their candidates (see Figure 4). Nearly as many registered Republicans in the state have an unfavorable (42%) opinion of Donald Trump as feel favorably toward him (45%). Senator Cruz also has relatively high unfavorable ratings among Republicans (48% favorable and 33% unfavorable). Senator Rubio is the only Republican candidate tested that has strongly positive favorability ratings among registered Republicans (61% favorable and 19% unfavorable).

Figure 4: Favorability Ratings of Republican Presidential Candidates among Registered Republicans, Pennsylvania Voters February 2016

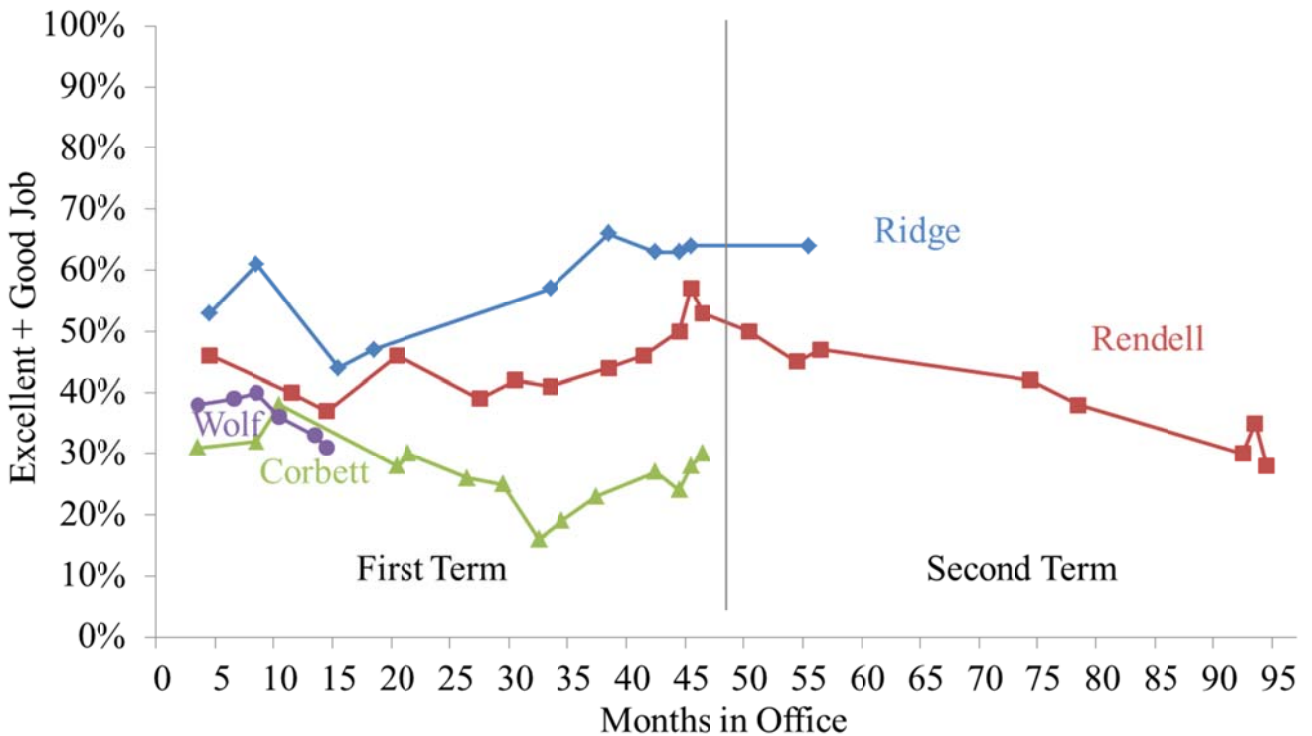


Tom Wolf Job Performance

One in three (31%) registered Pennsylvania voters believes Governor Wolf is doing an “excellent” or “good” job as governor, which is a decrease from the October (36%) and August (39%) polls. Only half (45%) of Democrats rate his performance as “excellent” or “good,” down from 57% in October. Governor Wolf’s job performance ratings are similar to Governors Rendell and Corbett but lower than Governor Ridge at this point in their first terms (see Figure 5).

Figure 5: Comparison of Pennsylvania Governors Job Performance Ratings

How would you rate the way that [fill Governor] is handling his job as governor? Would you say he is doing... an excellent job, a good job, only a fair job, or a poor job as governor?

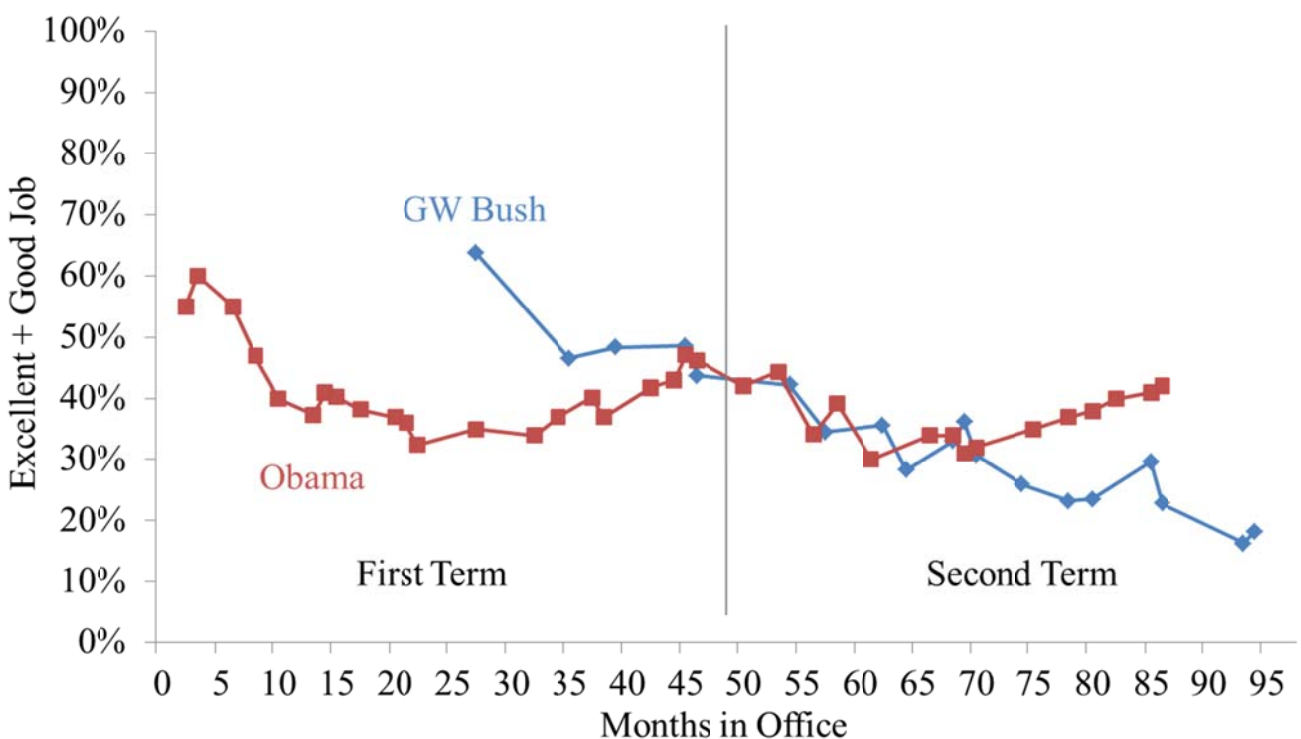


President Obama's Job Performance

Two in five (42%) registered Pennsylvania voters believe President Obama is doing an “excellent” or “good” job as President, which is about the same as in recent surveys. Two in three (70%) of the state’s registered Democrats provide the president with a favorable job performance rating, and only one in three (36%) independents does. One in ten (9%) registered Republicans rate his performance favorably. President Obama’s job performance ratings are better than President Bush’s ratings in Pennsylvania at a similar point in his presidency (Figure 6).

Figure 6: Comparison of Presidential Job Performance Ratings, Pennsylvania

How would you rate the way that [fill President] is handling his job as President? Would you say he is doing... an excellent job, a good job, only a fair job, or a poor job as President?



Methodology

The survey findings presented in this release are based on the results of interviews conducted February 13 - 21, 2016. The interviews were conducted at the Center for Opinion Research at Franklin & Marshall College on behalf of the Center for Politics and Public Affairs. The Poll was designed and administered by the staff of the Center for Opinion Research. The data included in this release represent the responses of 985 Pennsylvania registered voters, including 486 Democrats, 371 Republicans, and 128 Independents. The sample of registered voters was obtained from Labels & Lists. All sampled respondents were notified by letter about the survey. Interviews were completed over the phone and on-line depending on each respondent's preference. Survey results were weighted (gender, region and party registration) using an iterative weighting algorithm to reflect the known distribution of those characteristics as reported by the Pennsylvania Department of State.

The sample error for this survey is +/- 3.1 percentage points when the design effects from weighting are considered. In addition to sampling error, this poll is also subject to other sources of non-sampling error. Generally speaking, two sources of error concern researchers most. Non-response bias is created when selected participants either choose not to participate in the survey or are unavailable for interviewing. Response errors are the product of the question and answer process. Surveys that rely on self-reported behaviors and attitudes are susceptible to biases related to the way respondents process and respond to survey questions

Attachment A

Democratic Presidential Primary: Registered Democrats, Pennsylvania February 2016

If the Democratic primary election for president was being held today and the candidates included (*rotated*) Hillary Clinton, and Bernie Sanders, would you vote for Hillary Clinton, Bernie Sanders, some other candidate, or aren't you sure how you would vote?

	Clinton	Sanders	Other	Do Not Know
Ideology*				
Extremely liberal	46%	44%	0%	11%
Slightly liberal	58%	23%	1%	17%
Moderate	48%	21%	5%	25%
Slightly conservative	36%	26%	24%	14%
Extremely conservative	16%	16%	43%	25%
Gender*				
Male	41%	34%	10%	15%
Female	53%	22%	5%	20%
Age**				
Under 35	35%	40%	11%	14%
35-54	42%	36%	7%	15%
Over 55	51%	23%	6%	20%
Education				
HS or less	53%	17%	9%	21%
Some college	42%	29%	7%	22%
College degree	49%	31%	5%	15%
Income**				
Under 35	53%	17%	9%	21%
35-75	38%	35%	9%	18%
Over 75	53%	28%	5%	14%
Race				
White	48%	26%	7%	19%
Nonwhite	49%	33%	2%	15%
Marital Status				
Single, Never Married	43%	34%	6%	17%
Married	48%	27%	7%	18%
Not currently married	51%	24%	3%	22%
Religious Affiliation				
Protestant	49%	24%	5%	22%
Catholic	45%	25%	10%	20%
Other, unaffiliated	51%	31%	5%	13%
Born Again Christian or Fundamentalist				
Yes	47%	24%	8%	21%
No	48%	28%	6%	18%
Gun Owner*				
Yes	34%	31%	16%	19%
No	52%	26%	4%	18%
Region				
Philadelphia	59%	28%	4%	9%
Northeast	49%	29%	7%	15%
Allegheny	35%	29%	4%	32%
Southwest	49%	22%	10%	19%
Northwest	46%	15%	15%	24%
Central	42%	32%	7%	20%
Southeast	53%	26%	7%	14%
Employment**				
Fulltime	42%	34%	7%	17%
Other	56%	27%	7%	10%
Retired	49%	20%	6%	24%

* p<0.01

** p<0.05

Attachment B

Republican Presidential Primary: Registered Republicans, Pennsylvania February 2016

If the Republican primary election for president was being held today would you vote for (*rotated*) Donald Trump, Ben Carson, Jeb Bush, Ted Cruz, Marco Rubio, John Kasich, or aren't you sure how you would vote?

	Bush	Carson	Cruz	Kasich	Rubio	Trump	Do Not Know
Ideology*							
Extremely liberal	0%	0%	0%	16%	0%	25%	60%
Slightly liberal	11%	0%	0%	30%	20%	27%	11%
Moderate	6%	7%	3%	21%	16%	17%	31%
Slightly conservative	4%	6%	7%	15%	15%	27%	27%
Extremely conservative	2%	5%	29%	9%	20%	17%	19%
Gender							
Male	5%	6%	12%	15%	16%	26%	21%
Female	2%	6%	13%	15%	17%	17%	30%
Age							
Under 35	0%	13%	6%	15%	34%	13%	19%
35-54	2%	7%	18%	13%	13%	23%	24%
Over 55	5%	4%	11%	16%	16%	22%	26%
Education							
HS or less	4%	6%	14%	5%	15%	27%	30%
Some college	3%	4%	14%	14%	13%	22%	28%
College degree	4%	6%	10%	20%	19%	19%	22%
Income							
Under 35	2%	4%	12%	12%	14%	21%	35%
35-75	2%	5%	18%	14%	17%	18%	27%
Over 75	4%	7%	9%	17%	20%	24%	19%
Race							
White	4%	5%	12%	15%	17%	21%	25%
Nonwhite	0%	9%	14%	15%	9%	32%	21%
Marital Status							
Single, Never Married	3%	0%	8%	10%	29%	13%	36%
Married	4%	6%	14%	15%	15%	23%	24%
Not currently married	4%	5%	4%	18%	17%	22%	29%
Religious Affiliation							
Protestant	3%	6%	16%	14%	15%	18%	28%
Catholic	5%	5%	8%	16%	20%	25%	21%
Other, unaffiliated	3%	3%	10%	16%	14%	28%	26%
Born Again Christian or Fundamentalist							
Yes	3%	9%	19%	14%	13%	15%	26%
No	4%	4%	8%	16%	19%	26%	25%
Gun Owner							
Yes	4%	4%	13%	14%	16%	26%	22%
No	3%	7%	11%	17%	18%	17%	27%
Region*							
Philadelphia	7%	7%	7%	7%	8%	50%	15%
Northeast	2%	0%	13%	15%	13%	30%	26%
Allegheny	0%	10%	0%	10%	22%	26%	32%
Southwest	2%	6%	20%	17%	13%	12%	31%
Northwest	2%	2%	14%	18%	12%	17%	35%
Central	1%	7%	15%	10%	18%	25%	24%
Southeast	9%	7%	7%	22%	20%	14%	20%
Employment							
Fulltime	3%	4%	12%	16%	16%	25%	24%
Other	3%	11%	22%	10%	14%	14%	26%
Retired	5%	3%	8%	17%	19%	22%	26%

* p<0.01

** p<0.05

Attachment C

Job Performance: Governor Wolf, Pennsylvania February 2016

How would you rate the way that Tom Wolf is handling his job as governor? Would you say he is doing an...

	Excellent/Good	Only Fair/Poor	Do Not Know
Political party*			
Republican	12%	80%	7%
Democrat	45%	47%	7%
Independent or something else	36%	59%	5%
Ideology*			
Extremely liberal	58%	32%	11%
Slightly liberal	58%	36%	5%
Moderate	35%	59%	7%
Slightly conservative	11%	84%	5%
Extremely conservative	7%	86%	8%
Gender			
Male	30%	63%	7%
Female	33%	60%	7%
Age*			
Under 35	32%	51%	16%
35-54	29%	61%	10%
Over 55	32%	63%	5%
Education*			
HS or less	28%	65%	7%
Some college	26%	69%	4%
College degree	36%	55%	8%
Income			
Under 35	31%	61%	8%
35-75	31%	61%	7%
Over 75	34%	59%	7%
Race*			
White	31%	62%	7%
Nonwhite	47%	42%	11%
Marital Status			
Single, Never Married	33%	55%	12%
Married	32%	62%	6%
Not currently married	31%	63%	6%
Religious Affiliation*			
Protestant	26%	70%	4%
Catholic	27%	67%	6%
Other, unaffiliated	45%	45%	11%
Born Again Christian or Fundamentalist*			
Yes	22%	72%	7%
No	35%	58%	7%
Gun Owner*			
Yes	21%	76%	3%
No	37%	54%	9%
Region*			
Philadelphia	46%	45%	9%
Northeast	27%	66%	7%
Allegheny	41%	55%	4%
Southwest	26%	68%	7%
Northwest	21%	74%	5%
Central	26%	70%	3%
Southeast	38%	50%	13%
Employment			
Fulltime	32%	62%	6%
Other	31%	59%	10%
Retired	33%	61%	6%

* p<0.01 ** p<0.05

Attachment D

Job Performance: President Obama, Pennsylvania February 2016

How would you rate the way that Barack Obama is handling his job as president? Would you say he is doing an...

	Excellent/Good	Only Fair/Poor	Do Not Know
Political party*			
Republican	9%	91%	0%
Democrat	70%	29%	1%
Independent or something else	36%	63%	1%
Ideology*			
Extremely liberal	84%	15%	1%
Slightly liberal	83%	17%	0%
Moderate	49%	49%	1%
Slightly conservative	9%	91%	0%
Extremely conservative	3%	97%	1%
Gender*			
Male	36%	63%	0%
Female	48%	51%	1%
Age			
Under 35	43%	57%	0%
35-54	36%	64%	0%
Over 55	45%	54%	1%
Education*			
HS or less	33%	66%	1%
Some college	38%	61%	1%
College degree	49%	51%	0%
Income*			
Under 35	44%	53%	2%
35-75	43%	57%	0%
Over 75	45%	55%	0%
Race*			
White	41%	59%	1%
Nonwhite	69%	29%	2%
Marital Status*			
Single, Never Married	54%	45%	1%
Married	38%	61%	0%
Not currently married	52%	47%	1%
Religious Affiliation*			
Protestant	37%	62%	1%
Catholic	35%	65%	0%
Other, unaffiliated	59%	40%	1%
Born Again Christian or Fundamentalist*			
Yes	29%	70%	2%
No	48%	51%	0%
Gun Owner*			
Yes	22%	77%	0%
No	53%	46%	1%
Region*			
Philadelphia	64%	35%	1%
Northeast	38%	61%	1%
Allegheny	55%	45%	0%
Southwest	25%	75%	0%
Northwest	34%	65%	1%
Central	34%	65%	1%
Southeast	52%	48%	0%
Employment			
Fulltime	41%	59%	0%
Other	44%	54%	2%
Retired	44%	56%	0%

* p<0.01

** p<0.05

Marginal Frequency Report

Responses may not total 100% due to rounding.

REG. Some people are registered to vote, and many others are not. Are you CURRENTLY REGISTERED to vote at your present address?

100% Yes
0% No

RegPARTY. Are you currently registered as a Republican, a Democrat, an Independent, or as something else?

38% Republican
49% Democrat
12% Independent
1% Something else

Vote_Apr. Many people will vote in the primary election for president in April; however, many other people will not. What would you say are the chances of your voting in the April presidential primary? Are you certain to vote, will you probably vote, are the chances fifty-fifty you will vote, or don't you think that you will vote in the April presidential primary?

	Certain to vote	Will probably vote	Chances 50-50	Don't think will vote	Don't know
Feb 2016	76%	12%	4%	7%	1%
Feb 2008	82%	13%	2%	2%	1%
Jan 2008	78%	13%	4%	4%	1%

Pol_Int. Some people don't pay much attention to political campaigns. How about you? Would you say that you are...in the 2016 presidential campaign?

	Very much	Somewhat interested	Not very interested
Feb 2016	69%	27%	3%
Feb 2008	65%	29%	6%
Jan 2008	60%	35%	5%

RightDir. All in all, do you think things in Pennsylvania are generally headed in the right direction, or do you feel that things are off on the wrong track?

	Headed in Right Direction	Off on the Wrong Track	Don't know
Feb 2016	21%	67%	12%
Jan 2016	21%	67%	12%
Oct 2015	26%	62%	12%
Aug 2015	32%	54%	13%
Jun 2015	36%	47%	17%
Mar 2015	39%	47%	15%
Oct 2014	28%	61%	11%
Sept 2014	29%	60%	11%
Aug 2014	27%	61%	13%
Jun 2014	30%	59%	11%
Jan 2014	25%	62%	13%
Oct 2013	25%	61%	13%
Aug 2013	26%	62%	12%
May 2013	28%	58%	13%
Aug 2012	31%	56%	13%
June 2012	30%	57%	13%
Feb 2012	31%	56%	13%
Jan 2012	38%	47%	15%
Oct 2011	38%	49%	13%
Aug 2011	34%	53%	13%
Mar 2011	37%	53%	10%
Oct 2010	27%	64%	9%
Sep 2010	31%	59%	10%
Aug 2010	30%	58%	12%
May 2010	35%	55%	10%
Mar 2010	32%	58%	10%
Feb 2010	37%	50%	13%
Jan 2010	39%	53%	8%

MIP_PA. What do you think is the MOST IMPORTANT problem facing PENNSYLVANIA TODAY?
(512 registered voters)

May 2013	Aug 2013	Oct 2013	Jan 2014*	Jun 2014*	Aug 2014*	Sept 2014*	Oct 2014*	Mar 2015*	Jun 2015*	Aug 2015*	Oct 2015	Jan 2016	Feb 2016	
16%	16%	17%	11%	15%	14%	13%	14%	16%	17%	22%	39%	38%	47%	Government, politicians
17%	23%	21%	19%	23%	29%	30%	25%	19%	18%	21%	16%	18%	12%	Education, school
7%	5%	8%	11%	9%	10%	11%	9%	17%	12%	12%	9%	9%	10%	Taxes
11%	21%	17%	26%	21%	16%	16%	20%	15%	18%	15%	12%	8%	9%	Unemployment, personal finances
18%	7%	5%	5%	5%	3%	4%	5%	6%	7%	4%	4%	4%	4%	Economy, finances
3%	3%	2%	1%	1%	2%	1%	2%	3%	2%	3%	2%	3%	2%	Crime, drugs, violence, guns
4%	3%	4%	2%	5%	5%	3%	5%	3%	6%	5%	2%	2%	2%	Energy issues, gas prices
2%	3%	4%	3%	5%	3%	2%	2%	4%	5%	3%	2%	2%	1%	Roads, infrastructure, transportation
3%	6%	8%	4%	3%	2%	2%	2%	4%	1%	1%	2%	2%	1%	Healthcare, insurance
1%	1%	0%	2%	1%	1%	1%	1%	2%	1%	2%	0%	1%	1%	Values, morals
1%	0%	1%	1%	1%	0%	1%	0%	0%	1%	1%	1%	0%	1%	Retaining, attracting businesses
1%	0%	1%	1%	1%	1%	0%	1%	1%	1%	1%	1%	1%	1%	Environment
0%	0%	0%	0%	0%	1%	0%	1%	1%	1%	0%	0%	0%	1%	Immigration
3%	1%	1%	1%	1%	1%	4%	1%	1%	6%	1%	1%	1%	0%	Senior issues, social security
1%	2%	2%	1%	1%	0%	1%	0%	1%	0%	0%	0%	0%	0%	Civil liberties
1%	1%	1%	1%	1%	0%	0%	1%	1%	1%	1%	1%	1%	0%	Social issues
0%	0%	0%	0%	0%	0%	1%	0%	0%	0%	0%	0%	0%	0%	Foreign policy, terrorism, war
1%	1%	2%	1%	1%	1%	2%	1%	1%	0%	1%	1%	0%	0%	Welfare
0%	0%	0%	0%	0%	1%	0%	0%	0%	0%	0%	0%	0%	0%	Personal illness, health problems, family issues
1%	1%	3%	2%	2%	4%	3%	2%	2%	3%	2%	3%	4%	4%	Other
8%	5%	7%	8%	7%	8%	6%	8%	5%	0%	6%	6%	8%	5%	Don't know

* Question asked of registered respondents only

MIP_YF. What do you think is the MOST IMPORTANT PROBLEM facing YOU and YOUR FAMILY TODAY?

Sep 2010	Oct 2010	Feb 2016	
21%	27%	20%	Personal finances, unemployment
8%	11%	13%	Taxes
32%	22%	11%	Economy (in general)
11%	10%	10%	Health care, insurance
4%	2%	8%	Education, schools
4%	4%	7%	Government, politicians
3%	5%	6%	Senior issues, social security
1%	2%	3%	Personal illness, health problems
0%	0%	2%	Crime, drugs, violence, guns
1%	1%	1%	Environment
1%	1%	1%	Foreign policy, terrorism, war
1%	0%	1%	Gasoline, utility prices
0%	1%	1%	Values, morals
2%	0%	0%	Housing, real estate
2%	0%	0%	Social issues
1%	0%	0%	Civil liberties
0%	1%	0%	Personal family issues
2%	7%	11%	Nothing
1%	2%	4%	Other
6%	5%	4%	Don't know

Gov. Do you think that the problems facing you and your family can be solved with the help of the government, or are these problems beyond what you think the government can do? (815 respondents who reported a problem)

	With the help of government	Beyond what the government can do	Don't know
Feb 2016	64%	29%	8%
Oct 2010	63%	28%	9%
Sep 2010	53%	36%	12%
Aug 2010	59%	33%	9%
Aug 2008	69%	25%	6%

IntFav. Please let me know your opinion of some people involved in politics today. Is your opinion of [FILL name] favorable, unfavorable, undecided, or haven't you heard enough about [FILL name] to have an opinion? (*rotated*)

	Strongly favorable	Somewhat favorable	Somewhat unfavorable	Strongly unfavorable	Undecided	Don't know
TOM WOLF						
Feb 2016	14%	25%	16%	27%	9%	9%
Oct 2015	15%	23%	13%	20%	16%	13%
Aug 2015	22%	21%	9%	17%	18%	13%
Jun 2015	21%	23%	10%	17%	19%	11%
Mar 2015	22%	18%	11%	16%	22%	11%
Oct 2014	20%	20%	7%	18%	18%	16%
Sept 2014	19%	21%	9%	13%	18%	21%
Aug 2014	18%	19%	7%	10%	22%	24%
Jun 2014	15%	20%	5%	7%	20%	32%
BARACK OBAMA						
Feb 2016	27%	23%	9%	38%	3%	0%
Oct 2015	28%	19%	7%	41%	6%	0%
Aug 2015	23%	19%	8%	44%	5%	1%
Jun 2015	25%	18%	10%	41%	5%	1%
Mar 2015	25%	16%	7%	44%	7%	1%
Jan 2014	21%	21%	10%	38%	8%	1%
Oct 2013	27%	23%	7%	37%	5%	0%
Aug 2013	22%	19%	9%	41%	10%	0%
May 2013	32%	20%	7%	36%	4%	1%
Feb 2013	31%	18%	9%	35%	6%	1%
Oct 2012	36%	14%	7%	38%	6%	0%
Sep 2012	35%	15%	6%	36%	7%	1%
Aug 2012	25%	21%	8%	37%	7%	1%
June 2012	26%	21%	11%	33%	9%	1%
Feb 2012	23%	22%	12%	35%	8%	0%
Jan 2012	25%	20%	12%	32%	9%	1%
Mar 2011	17%	24%	11%	33%	14%	2%
May 2010	26%	18%	12%	34%	10%	0%
Mar 2010	25%	17%	13%	33%	11%	1%
Feb 2010	27%	22%	10%	29%	11%	1%
Jan 2010	23%	21%	11%	33%	10%	2%
Oct 2009	29%	16%	12%	27%	13%	3%
Aug 2009	29%	26%	9%	28%	7%	1%
Jun 2009	39%	17%	6%	21%	14%	3%
Feb 2009	38%	18%	8%	15%	17%	4%
Oct 2008	38%	15%	8%	25%	12%	3%
Sep 2008	31%	18%	9%	21%	17%	3%
Aug 2008	25%	18%	7%	22%	23%	5%

	Strongly favorable	Somewhat favorable	Somewhat unfavorable	Strongly unfavorable	Undecided	Don't know
PAT TOOMEY						
Feb 2016	9%	20%	12%	21%	12%	27%
Jun 2015	11%	23%	7%	15%	17%	28%
Mar 2015	9%	21%	11%	12%	18%	29%
Oct 2013	8%	19%	11%	16%	13%	34%
Aug 2013	7%	19%	10%	10%	19%	36%
May 2013	12%	23%	11%	11%	15%	28%
Feb 2013	11%	15%	8%	12%	16%	37%
Mar 2011	6%	17%	7%	6%	22%	42%
Oct 2010	15%	15%	10%	16%	16%	28%
Sep 2010	12%	13%	7%	9%	17%	43%
Aug 2010	11%	14%	8%	12%	19%	36%
May 2010	6%	10%	4%	5%	15%	60%
Mar 2010	8%	10%	5%	5%	13%	59%
Feb 2010	6%	10%	2%	5%	15%	62%
Jan 2010	6%	9%	4%	3%	13%	65%
Oct 2009	5%	11%	5%	5%	10%	64%
Aug 2009	7%	11%	4%	6%	9%	63%
Donald Trump						
Feb 2016	12%	15%	11%	51%	10%	1%
Marco Rubio						
Feb 2016	10%	27%	17%	27%	10%	10%
Ted Cruz						
Feb 2016	8%	17%	13%	44%	10%	8%
Hillary Clinton						
Feb 2016	19%	20%	12%	44%	5%	1%
Feb 2014	53%	27%	3%	6%	9%	2%
Bernie Sanders						
Feb 2016	15%	27%	11%	31%	9%	6%

DemPrim. If the 2016 Democratic primary election for U.S. SENATOR were being held today and the candidates included (*rotated*) John Fetterman, Katie McGinty and Joe Sestak, would you vote for John Fetterman, Katie McGinty, Joe Sestak, some other candidate, or aren't you sure how you would vote? (486 registered Democrats)

	Feb 2016	Jan 2016	Oct 2015	Aug 2015
Joe Sestak	21%	17%	15%	16%
Katie McGinty	12%	13%	13%	13%
John Fetterman	8%	6%	3%	--
Other Candidate	4%	4%	4%	5%
Don't know	56%	61%	65%	66%

CertDemSen. Are you absolutely CERTAIN you will vote FOR [fill] in the election, or are you still making up your mind? (191 registered respondents with vote choice)

- 53% Certain to vote
- 46% Still making up mind
- 1% Do not know

LeanDemSen. As of today, do you lean more to (*rotated*) John Fetterman, Katie McGinty, or Joe Sestak? (260 registered undecided respondents)

- 8% Joe Sestak
- 9% Katie McGinty
- 2% John Fetterman
- 81% Do not know

DemPresPrim. If the Democratic primary election for president was being held today and the candidates included (*rotated*) Hillary Clinton, and Bernie Sanders, would you vote for Hillary Clinton, Bernie Sanders, some other candidate, or aren't you sure how you would vote? (486 registered Democrats)

	Feb 2016	Jan 2016	Oct 2015
Hillary Clinton	48%	46%	52%
Bernie Sanders	27%	29%	18%
Other Candidate	7%	7%	12%
Don't know	18%	16%	17%

CertDem. Are you absolutely CERTAIN you will vote FOR [fill] in the election, or are you still making up your mind? (359 registered Democratic respondents with vote choice)

- 73% Certain to vote
- 27% Still making up mind
- 1% Do not know

LeanDem. As of today, do you lean more to (*rotated*) Hillary Clinton or Bernie Sanders? (87 registered Democratic undecided respondents)

- 33% Hillary Clinton
- 25% Bernie Sanders
- 42% Do not know

RepPresPrim. If the Republican primary election for president was being held today would you vote for (*rotated*) Donald Trump, Ben Carson, Jeb Bush, Ted Cruz, Marco Rubio, John Kasich, or aren't you sure how you would vote? (371 registered Republicans)

	Feb 2016	Jan 2016	Oct 2015
Donald Trump	22%	24%	23%
Marco Rubio	16%	11%	13%
John Kasich	15%	3%	6%
Ted Cruz	12%	14%	4%
Ben Carson	6%	5%	22%
Jeb Bush	4%	5%	3%
Don't know	25%	26%	20%

Lean_Sen. As of today, do you lean more to (*rotated*) Donald Trump, Ben Carson, Jeb Bush, Ted Cruz, Marco Rubio, or John Kasich? (93 registered Republican undecided respondents)

- 22% Marco Rubio
- 15% Donald Trump
- 11% Ted Cruz
- 10% Ben Carson
- 6% John Kasich
- 4% Jeb Bush
- 32% Do not know

Preslss. What issue will matter most to you as you think about choosing a [Republican/Democratic/ candidate for president?

275 Registered Republicans Jan 2016	371 Registered Republicans Feb 2016		486 Registered Democrats Feb 2016	351 Registered Democrats Jan 2016
10%	22%	Personal characteristic of candidate	28%	7%
26%	19%	Terrorism, war, foreign policy	10%	15%
14%	10%	Unemployment, economy, finances	10%	17%
9%	7%	Government, politicians	3%	8%
6%	7%	Immigration, illegal immigrants	1%	0%
2%	5%	Civil liberties	2%	2%
8%	4%	Values and morality	0%	2%
2%	4%	Candidate who will put country back on right track, in general	1%	2%
3%	3%	Unemployment, personal finances	7%	6%
2%	3%	Healthcare, insurance	5%	12%
1%	3%	Bipartisanship	6%	3%
2%	2%	Taxes	1%	3%
1%	1%	Crime, drugs, violence, guns	2%	3%
1%	1%	Elder issues, social security	2%	3%
1%	1%	Justice system, lawyers	2%	1%
1%	0%	Education, schools	3%	4%
1%	0%	Environment	1%	2%
0%	0%	Social Issues	1%	0%
1%	0%	Retaining, attracting business	0%	0%
0%	0%	Racism	1%	0%
4%	3%	Other	5%	4%
8%	5%	Do not know	10%	8%

Rate_Gov. How would you rate the way that Tom Wolf is handling his job as Governor? Would you say he is doing an...

	Excellent job	Good job	Only a fair job	Poor job	Don't know
Feb 2016	4%	27%	32%	29%	7%
Jan 2016	5%	28%	36%	26%	6%
Oct 2015	6%	30%	37%	21%	6%
Aug 2015	7%	32%	34%	17%	10%
Jun 2015	8%	31%	34%	16%	13%
Mar 2015	7%	31%	29%	14%	19%

RateSenT. How would you rate the way that Pat Toomey is handling his job as U.S. SENATOR?
 Would you say he is doing an...

	Excellent job	Good job	Only a fair job	Poor job	Don't know
Feb 2016	3%	23%	31%	17%	27%
Jan 2016	4%	29%	34%	17%	18%
Oct 2015	4%	31%	37%	13%	15%
Aug 2015	6%	34%	32%	11%	18%
Jun 2015	5%	29%	33%	14%	20%
Mar 2015	3%	28%	35%	13%	21%
Oct 2013	4%	18%	34%	19%	25%
Aug 2013	4%	20%	42%	9%	26%
May 2013	4%	27%	39%	10%	21%
Oct 2011	3%	29%	40%	11%	18%
Aug 2011	5%	24%	37%	14%	20%
Mar 2011	3%	25%	36%	10%	27%

RatePres. How would you rate the way that Barack Obama is handling his job as president?
 Would you say he is doing... an excellent job, a good job, only a fair job, or a poor job as President?

	Excellent job	Good job	Only a fair job	Poor job	Don't know
Feb 2016	13%	29%	18%	39%	1%
Jan 2016	13%	28%	20%	39%	1%
Oct 2015	14%	26%	18%	42%	0%
Aug 2015	12%	26%	16%	45%	1%
Jun 2015	12%	25%	20%	43%	1%
Mar 2015	11%	24%	21%	43%	1%
Oct 2014	8%	24%	27%	41%	0%
Sept 2014	6%	25%	25%	43%	1%
Aug 2014	7%	27%	28%	37%	1%
Jun 2014	7%	27%	22%	42%	1%
Jan 2014	6%	24%	31%	37%	1%
Oct 2013	11%	28%	21%	39%	1%
Aug 2013	8%	26%	23%	42%	1%
May 2013	14%	30%	22%	33%	1%
Feb 2013	14%	28%	23%	34%	1%
Oct 2012	17%	29%	20%	33%	1%
Sep 2012	18%	29%	19%	33%	0%
Aug 2012	12%	31%	23%	33%	1%
June 2012	13%	29%	30%	28%	1%
Feb 2012	11%	26%	29%	35%	0%
Jan 2012	9%	31%	29%	30%	0%
Oct 2011	9%	28%	31%	32%	1%
Aug 2011	9%	25%	33%	33%	1%
Mar 2011	7%	28%	30%	34%	1%
Oct 2010	8%	24%	31%	36%	1%
Sep 2010	10%	26%	33%	30%	0%
Aug 2010	9%	28%	28%	35%	1%
May 2010	14%	24%	32%	29%	1%
Mar 2010	12%	28%	27%	32%	1%
Feb 2010	12%	29%	32%	27%	0%
Jan 2010	11%	27%	32%	29%	1%
Oct 2009	17%	23%	31%	28%	1%
Aug 2009	14%	33%	29%	24%	0%
Jun 2009	20%	35%	25%	19%	1%
Mar 2009	23%	37%	22%	14%	4%
Feb 2009	25%	30%	23%	13%	9%

Kane1 The Montgomery County District Attorney has filed criminal charges against Attorney General Kathleen Kane for obstruction, conspiracy, perjury and abuse of office. While the case against her goes through the criminal justice system, do you think that Kathleen Kane should resign as Attorney General or do you think she should continue to serve as Attorney General?

Aug 2015	Oct 2015	Feb 2016	
46%	51%	58%	Resign
43%	36%	29%	Continue to serve
11%	13%	12%	Don't know

Kane2 If Kathleen Kane does not resign, do you think the state legislature should vote to impeach and remove her from office? (562 voters who feel Kane should resign)

Aug 2015	Oct 2015	Feb 2016	
52%	57%	58%	Yes
23%	18%	19%	No
25%	25%	24%	Don't know

IntGovRole. Please tell me whether you agree or disagree with each of the following statements (rotated)

Feb 2016	Strongly Agree	Somewhat Agree	Somewhat Disagree	Strongly Disagree	Don't know
The government must first and foremost protect all people from harm.	64%	24%	7%	4%	1%
When the government makes laws, the number one principle should be ensuring that everyone is treated fairly.	73%	18%	4%	4%	1%
Loyalty to one's group is more important than one's individual concerns.	8%	16%	28%	39%	9%
When the government makes laws, those laws should always respect the traditions and heritage of the country.	44%	28%	15%	10%	3%
The government should try to help people live virtuously and avoid sin.	14%	14%	18%	50%	4%

GovRole2. Do you believe the actions of the United States government should mostly be aimed at maintaining and representing a common constitution and legal order or do you believe the actions of the United States government should be mostly aimed at maintaining and representing a common heritage, religion, and tradition?

- 81% Constitution and legal order
- 13% Heritage, religion, and tradition
- 7% Don't know

DEMO I now have a final few questions for statistical purposes only.

CNTY. Region of state (What is the name of the county you live in?)

26%	Central
23%	Southeast
12%	Northeast
11%	Southwest
10%	Philadelphia
9%	Allegheny
9%	Northwest

AGE. What was your age on your last birthday?

2%	18-24
7%	25-34
10%	35-44
14%	45-54
26%	55-64
42%	65 and older

EDUC. What was the highest grade level of schooling you have completed?

1%	Non high school graduate
21%	High school graduate or GED
14%	Some college
12%	Associate's degree or technical degree
24%	Bachelor's degree
28%	Post graduate degree

MAR. What is your CURRENT marital status...are you single, married, separated, divorced, or a widower?

70%	Married
13%	Single, Never Married
10%	Widow or widower
7%	Divorced
1%	Separated

IDEO. Politically speaking, do you consider yourself to be a liberal, a moderate, or a conservative?

	Liberal	Moderate	Conservative	Don't know
Feb 2016	27%	33%	37%	3%
Jan 2016	22%	39%	36%	4%
Oct 2015	22%	38%	37%	4%
Aug 2015	21%	36%	40%	3%
Jun 2015	23%	35%	39%	4%
Oct 2014	23%	37%	36%	3%
Sept 2014	22%	36%	38%	5%
Aug 2014	20%	39%	36%	5%
Jun 2014	26%	36%	34%	5%
Jan 2014	24%	43%	28%	5%
Oct 2013	24%	39%	31%	6%
Aug 2013	22%	42%	33%	3%
May 2013	24%	39%	31%	6%
Feb 2013	26%	36%	35%	3%
Oct 2012	22%	39%	35%	5%
Sep 2012	26%	34%	35%	5%
Aug 2012	21%	40%	36%	4%
June 2012	25%	34%	36%	5%
Feb 2012	17%	39%	40%	4%
Jan 2011	21%	39%	36%	4%
Oct 2011	20%	39%	33%	8%
Aug 2011	24%	32%	37%	7%
Mar 2011	16%	33%	41%	10%
Oct 2010	16%	37%	39%	8%
Sep 2010	15%	34%	40%	10%
Aug 2010	19%	32%	40%	9%
May 2010	19%	32%	40%	9%
Mar 2010	17%	35%	40%	8%
Feb 2010	21%	33%	37%	9%
Jan 2010	19%	30%	42%	9%

PARTY. Regardless of how you are registered... in politics, as of today, do you think of yourself as a Republican, a Democrat, or an Independent?

21% Strong Republican
 12% Republican
 9% Lean Republican
 6% Independent
 15% Lean Democrat
 11% Democrat
 27% Strong Democrat
 1% Don't know

GUN. Are you a gun owner?

32% Yes
 67% No
 1% Don't know

GUN2. Generally speaking, do you favor or oppose creating more laws that regulate gun ownership?

	Strongly favor	Somewhat favor	Somewhat oppose	Strongly oppose	Don't know
Feb 2016	40%	16%	13%	29%	3%
Jan 2016	40%	15%	13%	29%	3%
Oct 2015	43%	13%	10%	31%	4%
Aug 2015	40%	14%	10%	32%	5%
Jun 2015	38%	13%	12%	33%	5%
Oct 2014	42%	12%	8%	37%	2%
Sept 2014	39%	14%	10%	32%	5%
Aug 2014	39%	14%	10%	31%	6%
Jun 2014	43%	12%	9%	31%	5%
Jan 2014	42%	12%	9%	32%	6%
Oct 2013	46%	16%	9%	24%	5%
Aug 2013	39%	12%	13%	33%	4%
May 2013	43%	14%	11%	30%	3%
Feb 2013*	43%	15%	10%	28%	4%
Aug 2007	40%	20%	14%	23%	3%
Jun 2007	39%	15%	12%	31%	3%
Feb 2007	39%	17%	15%	26%	3%
Oct 2006*	35%	16%	15%	26%	8%
Sep 2006*	34%	15%	17%	28%	6%
Aug 2006*	37%	15%	14%	27%	7%
May 2006*	37%	14%	16%	27%	6%
Feb 2006	35%	19%	17%	22%	7%
Nov 2005	38%	20%	14%	20%	8%
Sep 2005	39%	16%	13%	25%	8%
Jun 2005	39%	17%	16%	23%	6%
Oct 2004*	33%	19%	19%	23%	7%
Sep 2004*	38%	19%	15%	20%	8%
Aug 2004*	35%	20%	15%	23%	7%
Mar 2004*	42%	17%	14%	21%	7%
Oct 2002*	34%	18%	15%	26%	7%
Sep 2002*	28%	20%	14%	29%	9%
Jun 2002*	40%	14%	11%	28%	7%
Oct 2001*	33%	22%	15%	24%	6%
Apr 2001*	41%	18%	14%	22%	6%
Oct 2000*	37%	18%	15%	22%	9%
Feb 2000*	41%	19%	11%	24%	5%

* Question asked of registered respondents only

BG1. Do you favor or oppose a federal law requiring background checks on all potential gun buyers, including those who purchase guns at gun shows or online?

Jan 2016	Feb 2016	
76%	78%	Strongly favor
12%	13%	Somewhat favor
4%	2%	Somewhat oppose
7%	6%	Strongly oppose
2%	1%	Don't know

BG2. Do you favor or oppose efforts to include more information about citizens' mental health into the background check system?

Jan 2016	Feb 2016	
68%	68%	Strongly favor
17%	19%	Somewhat favor
5%	5%	Somewhat oppose
5%	4%	Strongly oppose
5%	3%	Don't know

Hisp. Are you Hispanic or Latino, or not?

2%	Yes
98%	No
1%	Don't know

RACE. Which of the following categories best describes your racial background?

92%	White
8%	Non-white

REL. Do you consider yourself to be Protestant, Catholic, some other religion, or not affiliated with any religion?

39%	Protestant
31%	Catholic
12%	Some other religion
19%	Not affiliated with any religion

BAC. Do you consider yourself to be a born-again Christian or fundamentalist, or not?

23%	Yes
74%	No
3%	Don't know

WORK. Are you currently working fulltime, part-time, going to school, keeping house or something else?

41%	Full-time
37%	Retired
13%	Part-time
4%	Something else
3%	Disabled
1%	Going to school
1%	Unemployed

INCOME. And, just for statistical purposes, we need to know if your total family income is above or below \$50,000 per year?

9%	Under \$25,000
7%	\$25-\$35,000
14%	\$35-50,000
17%	\$50-75,000
18%	\$75-100,000
29%	Over \$100,000
6%	Don't know

DONE. Sex of respondent:

48%	Male
52%	Female